

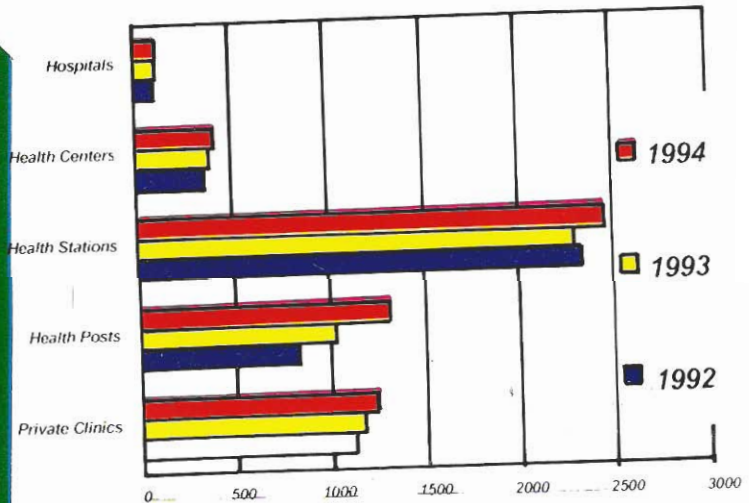


በኢትዮጵያ ፌዴራላዊ ዲሞክራሲያዊ ሪፐብሊክ  
የጤና ጥበቃ ሚኒስቴር

Federal Democratic Republic of Ethiopia  
Ministry of Health

# Health and Health Related

# INDICATORS



1  
9  
9  
4

Planning and Programming Department, MOH

Health and Health Related  
**INDICATORS**

*1994 E.C.*  
*(2001/02 G.C.)*

Planning and Programming Department

Health Information Processing & Documentation Team

## Explanatory Notes

All years in this annual publication, unless otherwise stated, are in Ethiopian calendar.

The following symbols have been used in the tables throughout the report:

- A blank in a table indicates that the item is not applicable.
- A number in parenthesis ( ) indicates a negative number.
- NA in a table indicates data is not available



Cover page design and camera ready copy  
by  
Health Information Processing & Documentation  
Team

**Copyright** © Planning and Programming Department, MOH

December 2001

**Fax:** (251)(1)512691

**Phone:** (251)(1)151791

**e-mail:** moh@telecom.net.et

# PREFACE

One of the basic characteristic of the Health Sector Development Programme (HSDP) is its effectiveness in the planning, implementation and monitoring of the health sector activities. The growing need for careful planning, strong implementation and systematic monitoring has given more significance to the availability of adequate and timely information.

Much effort have been put to improve the quality and scope of the data used in this issue. Current and previous years coverage indicators that needed population data have been adjusted based on “The 1994 Population and Housing Census of Ethiopia, Volume II Analytical Report.”

It is hoped that this publication will serve as a useful and quick reference for policy markers and planners as one of the tools for the design of future development plan, monitoring and evaluation. It is also hoped that this publication will meet the needs of researchers and those interested in the health sector.

Among the sources of information used for the preparation of this publication are:

1. The 1994 (G.C) population and Housing Census of Ethiopia, Analytical Reports
2. The Ethiopian Population Profile: 1999 G.C.
3. Educational Statistics: Annual Abstract, 2000
4. Regional Health Bureaus of the country.
5. Concerned department of MOH, MEDaC, and MOF.
6. International Health Related Publications

As part of its main activities, the Planning and Programming Department will continue to update the publication annually.

Comments and suggestions are welcome and should be addressed to:

Planning and Programming Department

P.O. Box 1234

Ministry of Health

Acknowledgements are due to all those, whose invaluable comments and suggestions have made it possible the completion of this publication on time.

***Health Information Processing & Documentation Team***

## ACRONYMS

ADD	Acute Diarrhea Diseases
AIDS	Acquired Human Immunodeficiency Syndrome
ARI	Acute Respiratory Infection
BCG	Bacille Calmette Guerin
B. Dysentery	Bacillary Dysentery
CSA	Central Statistical authority
CBR	Crude Birth Rate
CDR	Crude Death Rate
CHA	Community Health Agent
CMR	Child mortality Rate
CNS	Central Nervous System
CPR	Contraceptive Prevalence Rate
DEF	Defaulters
DPT	Diphtheria, Pertusis and Tetanus
ENT	Ear, Nose & Throat
EPI	Expanded Programme on Immunization
ETB	Ethiopian Birr
E. Typhus	Epidemic Typhus
FLE	Female Life Expectancy
FP	Family Planning
GDP	Gross Domestic Product
GFR	General Fertility Rate
GNP	Gross National Product
GPI	Gender Parity Index
G. Worm	Guinea Worm
H/Ass.	Health Assistant
HC	Health Center
HCU	Health Care Unit
HH	House Hold
HIV	Human Immunodeficiency Virus
HO	Health Officer
HP	Health Post
HSDP	Health Sector Development Programme
IMR	Infant Mortality Rate
IDS	International Disease Surveillance

IUCD	Intra Uterine Contraceptive Device
LB	Live Birth
MB	Multibacillary
MLE	Male Life Expectancy
MCH	Maternal and Child Health
MD	Medical Doctor
M. Meningitis	Meningococcal Meningitis
MMR	Maternal Mortality Rate
MOH	Ministry of Health
MPH	Masters of Public Health
NGO	Non Governmental Organization
NNT	Neonatal Tetanus
NRS	National Regional States
Ob.Gyn	Obstetric & Gynecology
OGA	Other Government Agency
OPD	Out-patient Department
OPV	Oral Polio vaccine
ORT	Oral Rehydration therapy
PB	Paucibacillary
PF	Plasmodium Falciparum
PHCU	Primary Health Care Unit
PHRD	Policy & Human Resource Development
PHSC	Potential Health Service Coverage
PM	Plasmodium Malaria
PV	Plasmodium Vivax
R. Fever	Relapsing Fever
RLPS	Relapse
RNI	Rate of Natural Increase
ROW	Rest of the World
SNNPR	Southern Nations & Nationalities Peoples Region
STD	Sexually Transmitted Disease
TB	Tuberculosis
TBA	Traditional Birth Attendant
TFR	Total Fertility Rate
TT	Tetanus Toxoid
URTI	Upper Respiratory Tract Infection
WHO	World Health Organization

# TABLE OF CONTENTS

<b>Preface</b> .....	<b>i</b>
<b>Acronyms</b> .....	<b>iii</b>
<b>Introduction</b> .....	<b>1</b>
<b>Organizational Structure of Federal Ministry of Health</b> .....	<b>3</b>
<b>1. Summary Of Basic Health Indicators</b> .....	<b>4</b>
<b>2. Major Health Sector Development Targets</b> .....	<b>6</b>
<b>3. Demography &amp; Vital Statistics</b> .....	<b>8</b>
3.1 Some Demographic Indicators, 1994 .....	8
3.2 Vital Statistics, 1993– 1998 (2000—05 G.C.) .....	9
3.3 Demographic Data & Estimates for Some Countries & Regions of the World.....	10
<b>4. Education &amp; Economic Statistics</b> .....	<b>12</b>
4.1 School Age Population, Enrollment And Gross Enrollment Ratios By Region And Sex, 1994.....	12
4.2 Socio-Economic Data, 1986-1994.....	13
<b>5. Maternal &amp; Child Health Services</b> .....	<b>14</b>
5.1 Immunization Coverage By Antigen, 1994.....	15
5.2 Drop-out Rates of Routine EPI Activity, 1994 .....	16
5.3 TT2+ Achievement & Coverage By Region, 1994.....	17
5.4 Maternal Health Services Achievement & Coverage By Region, 1994 .....	18
5.5 Nutritional Status of Children & Mothers .....	19
5.6 Amount of Contraceptive Distributed to the Regions.....	20
5.7 Percentage of Contraceptive Users by Type of Contraceptive Method .....	21
<b>6. Hygiene &amp; Environmental Health Service</b> .....	<b>22</b>
6.1 Hygiene & Environmental Health Profile by Regions.....	22
6.2 Global Hygiene & Environmental Health Service Indicators.....	23
<b>7. Health Infrastructure</b> .....	<b>24</b>
7.1 Potential Health Service Coverage And Visit Per Capita, 1994.....	24



7.2	Distribution Of Health Infrastructure, 1994.....	25
7.3	Distribution of Hospitals by Type and Ownership, 1994 .....	26
7.4	Distribution Of Private Owned Clinics by Type and Region, 1994.....	26
7.5	Distribution Of Pharmaceutical Retail Outlets By Region & Ownership, 1994.....	27
<b>8.</b>	<b>Human Resources.....</b>	<b>28</b>
8.1	Health Human Resource Distribution By Region & Sex .....	28
8.2	Distribution of Physicians By Specialization & Region.....	29
8.3	Distribution of Nurses By Specialty, Region & Sex.....	30
8.4	Health Professionals Population Ratio By Region .....	31
<b>9.</b>	<b>Budget Allocation &amp; Expenditure .....</b>	<b>32</b>
9.1	Recurrent Health Budget Allocation & Expenditure By Region, 1994 .....	32
9.2	Capital Health Budget Allocation & Expenditure By Region, 1994.....	32
9.3	Health Expenditure Per Capita By Region, 1994 .....	33
9.4	National Recurrent Budget Allocation & Expenditure 1980-1994 .....	33
9.5	National Capital Budget Allocation & Expenditure 1980-1994.....	34
<b>10.</b>	<b>Disease Statistics .....</b>	<b>35</b>
10.1	Malaria Cases by Parasite Species .....	35
10.2	Tuberculosis and Leprosy .....	37
10.2.1	Tuberculosis Case Findings, 1994 .....	37
10.2.2	Tuberculosis Results of Treatment 1992/1993 .....	38
10.2.3	Leprosy Case findings, 1994.....	39
10.3	National Surveillance System IDS Report.....	40
10.3.1	Annual Report of Epidemic Disease, 1994.....	40
10.3.2	IDS Report, 1994.....	41
10.4	Regional Reported HIV/ AIDS Cases .....	41
<b>11.</b>	<b>Output From Health Professional Training School .....</b>	<b>43</b>
11.1	Summary of Graduates.....	43
11.2	Distribution of Health Training Schools.....	44
11.3	Post Basic and Post Graduates .....	47
	<b>Glossary .....</b>	<b>48</b>

# INTRODUCTION

The land area of Ethiopia is estimated at about 1.1 million square kilometers and the current population is approximately 67.2 million, of which more than 56.9 million (85.0 percent) live in rural areas. Ethiopia is a Federal Democratic Republic composed of 9 National Regional States (NRS): Tigray, Afar, Amhara, Oromia, Somalia, Benishangul-Gumuz, Southern Nations, Nationalities and Peoples Region (SNNPR), Gambella and Harari, and two Administrative states (Addis Ababa city administration and Dire Dawa council)

The National Regional States as well as the Administrative states are further divided into sixty five Zones, five hundred twenty-three woredas and around 10,000 kebeles. There are also two zones and ten woredas classified as special.

An estimated 60 to 80 percent of health problems are due to infectious and communicable diseases and nutritional problems. The health care system is underdeveloped and only able to provide basic service to only about 60% of the population. Much of the rural population has no access or is far from modern health care, leading to inability of the health care delivery systems to respond both quantitatively and qualitatively to the health needs of the people. Previously, the health delivery system was highly centralized; delivered in a fragmented way and relied on vertical programs; and there was little collaboration between the public and private sectors. Consequently, the Ethiopian Transitional and Federal Governments have initiated political, economic and social changes resulting in the formulation of the 1985 Health Policy and Strategy. The Federal Government and the regional authorities are trying to reorganize health services into a more cost-effective and efficient system better able to contribute to the overall socio-economic development effort of the country.

The Government plans to realize its health development objective through a twenty-year health development strategy, with a series of five-year rolling investment programs, of which the first Health Sector Development Program (HSDPI) covered the period 1990 - 1994 is now completed with the second HSDP covering 1995-1997 just started this year. The HSDP proposes a sector wide approach to achieve the Government's objectives.

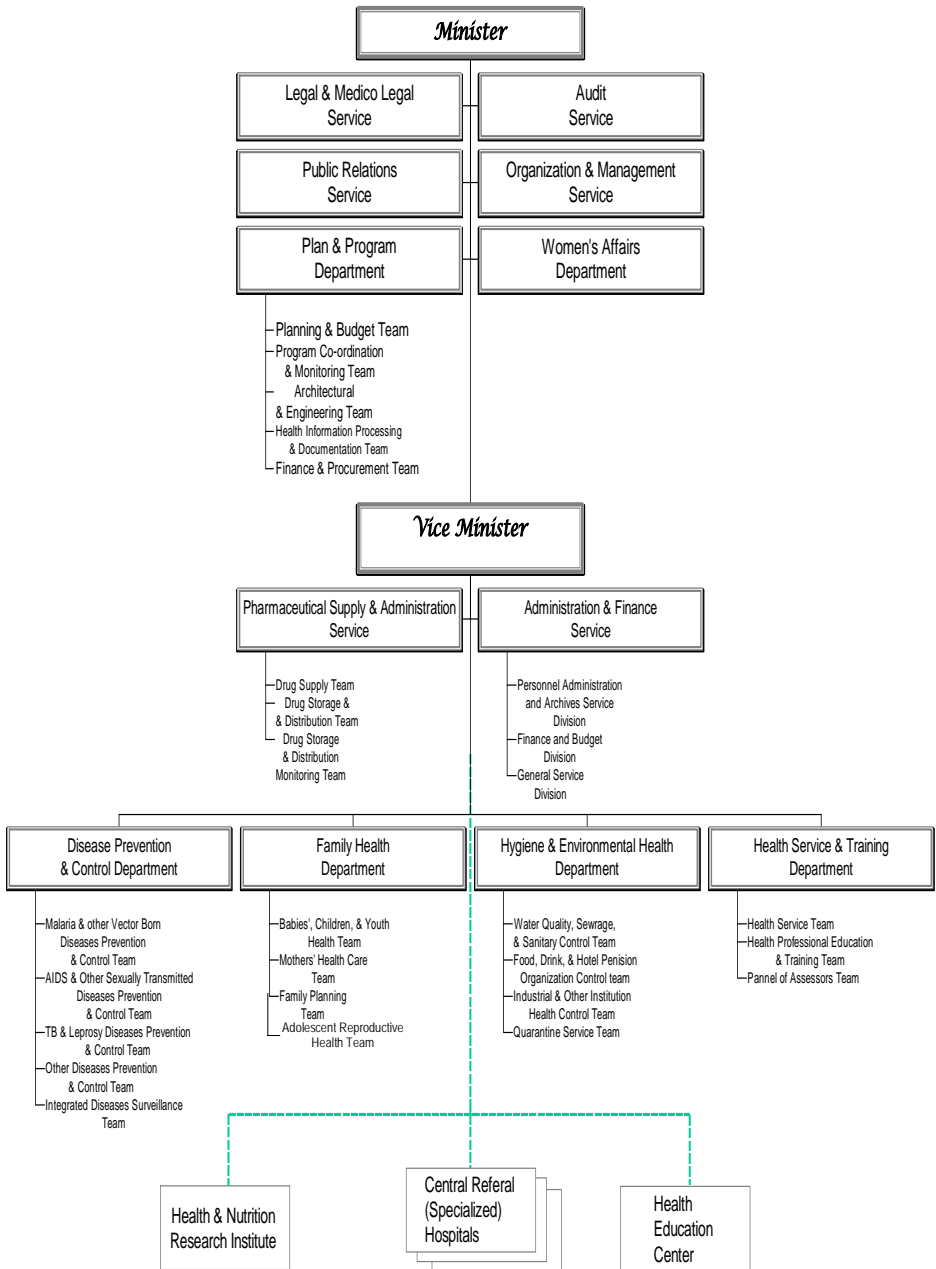
Both HSDPI & II, like the National Health Policy, are the result of a critical examination of the nature, magnitude and root causes of the prevailing health problems of the country and awareness of newly emerging health problems. Founded on a commitment to democratic principles and to decentralized management and provision of service, it accords appropriate emphasis to the needs of the less privileged rural population which constitute the overwhelming majority of the population and it also sets realistic goals and the means for attaining them. In so doing, the Government accords health a prominent place in its order of priorities and commits itself to the attainment of these goals accessing through the proper utilization of both internal and external resources.

The current publication has included some refinement in terms of Health Service Coverage calculation as well as human resources availability in the health care system. The human resource data includes data from the private sector in Addis Ababa & from the Health facilities run by other governmental organizations.

The Health Service Coverage in this publication reflects health posts serving a population of 5,000 which was not included in the previous calculation. This was done because in practice they provide services to separate areas & potential population groups. A separate calculation has also been introduced as an optional recognizing the services of the private clinics that may have approximated the Potential Health Service Coverage in the country.

Care should also be taken in interpreting the CPR Coverage for the year 2001/2002. Since incomplete data from Addis Ababa region has clearly contributed to underestimate the coverage at national level.

# The Federal Ministry of Health



December 2001

# 1. SUMMARY OF BASIC HEALTH INDICATORS

Indicator	1990	1991	1992	1993	1994
Total Population	59,882,000	61,672,000	63,495,000	65,344,000	67,220,000
PHS Coverage (%)	50.7	49.1	50.7	51.2	51.8
PHS Coverage (%)*	NA	57.3	57.3	59.1	61.0
EPI Coverage (%)**	42.7	38.4	41.9	41.9	51.5
Health Service Utilization	NA	0.27	0.27	0.27	NA
CPR (%)***	6.0	7.9	13.3	18.7	17.2
Antenatal Coverage (%)	25.7	25.5	29.1	34.7	34.1
<b>Number of Facilities</b>					
Hospitals	96	100	103	110	115
Health Centers	282	304	356	382	412
Health Stations	2331	2268	2330	2393	2452
Health Posts	802	1012	833	1023	1311
Private Clinics	712	966	1119	1170	1235
Pharmacies	292	272	304	311	311
Drug Shops	222	243	250	249	309
Rural Drug Vendors	1659	1858	1950	1917	1856
<b>Human Resources (at service)</b>					
Physicians	1415	1283	1263	1366	1888
Health Officers	75	144	201	296	484
Nurses	4774	5498	6713	7723	12838
Health Assistants	12521	10641	8330	7386	8149
Para Medicals	1772	1989	2201	2758	3706
<b>Human Resources (Graduate)</b>					
Physicians	140	136	152	128	152
Health Officers	83	79	157	181	183
Nurses	1129	1416	1399	2164	1437
<b>Health Budget as % of Gov't Total Budget Of Total Health Budget</b>					
Capital (%)	5.6	5.3	4.8	7.3	7.0
Recurrent (%)	48.3	38.8	47.0	61.9	47.8
Gov't Health Expenditure Per Capita (ETB)	51.7	61.2	53.0	38.1	52.2
	11.3	17.9	8.3	11.5	NA

\* The Coverage includes the service provided by Health Posts which were not included in the previous publications.

\*\* Coverage is calculated using DPT3 only.

\*\*\* Services outside the government health institutions included only for Hareri & Benishangul. Incomplete data of Addis Ababa underestimate the national figure.

Fig.1 Basic Health Service Indicators

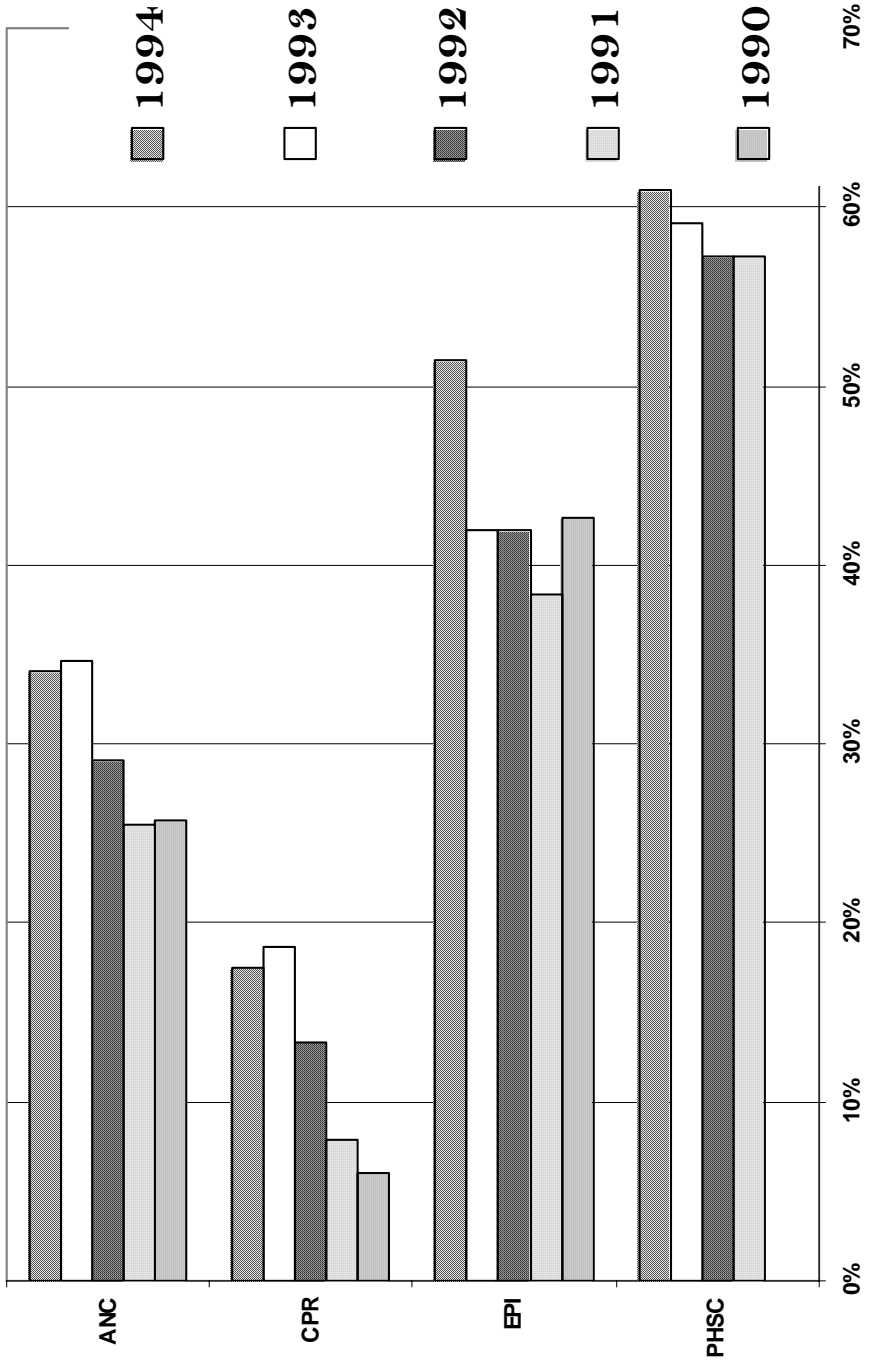
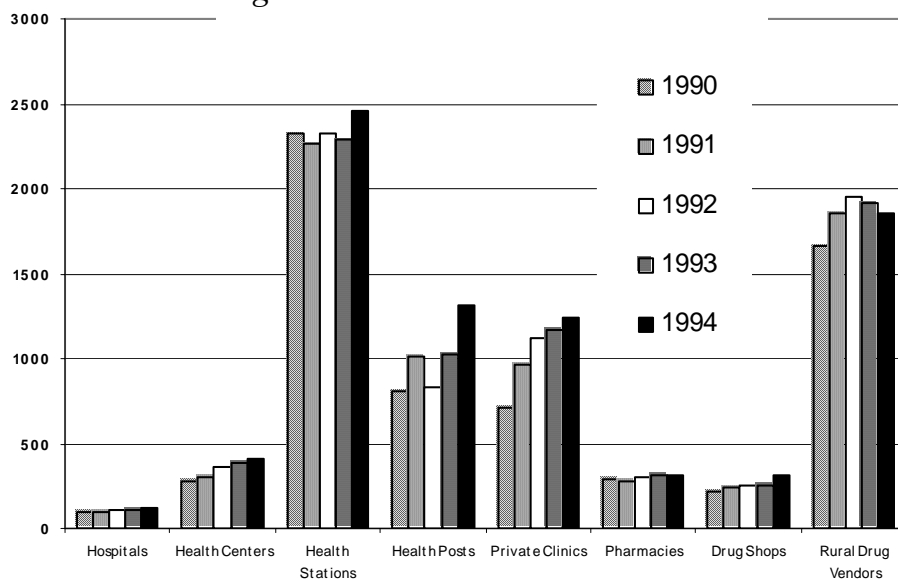


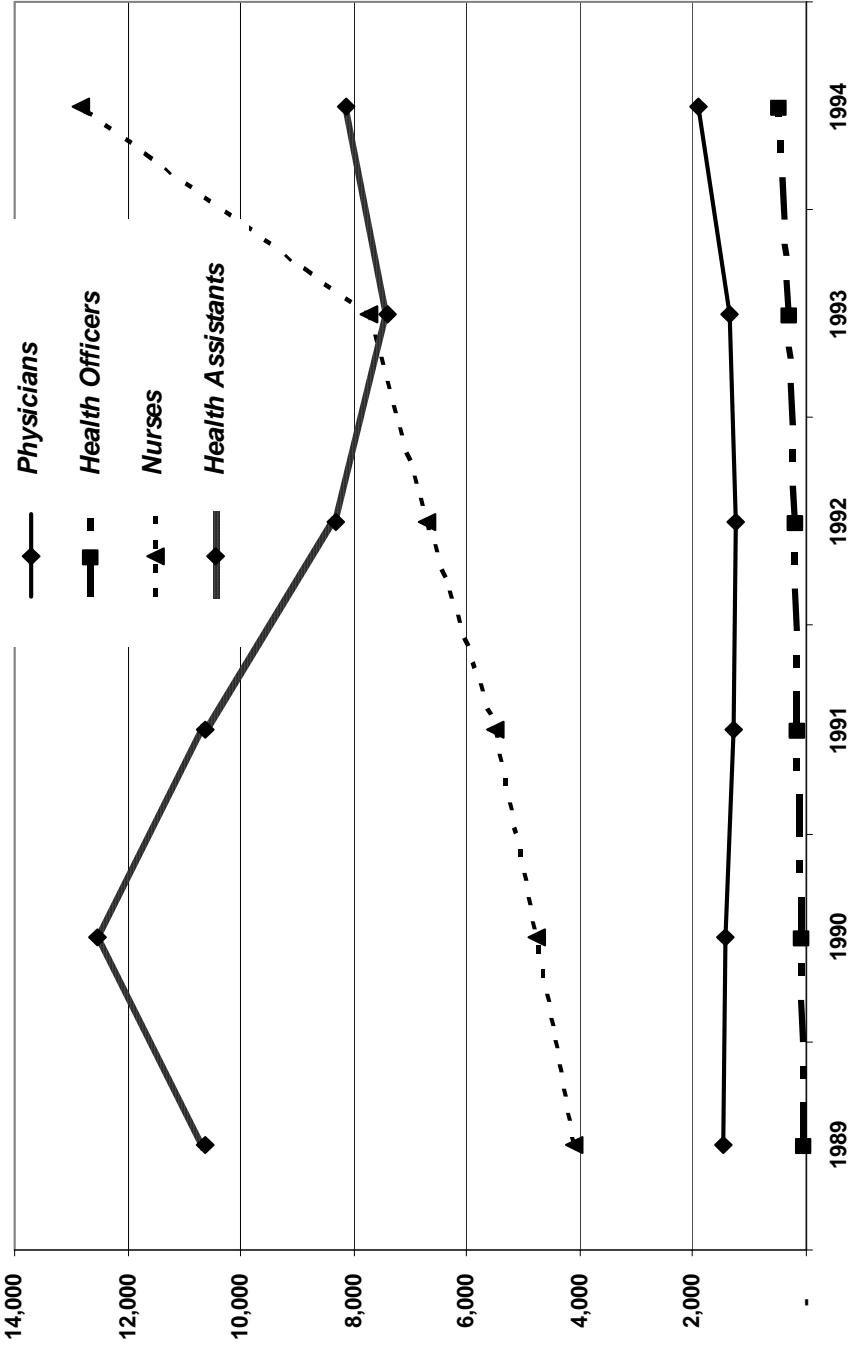
Fig. 2 Distribution of Health facilities



## 2. MAJOR HEALTH SECTOR DEVELOPMENT TARGETS (1995-1997)

Indicators	Target
Contraceptive coverage rate	24%
ANC coverage	45%
EPI coverage	70%
Coverage of TT2 to pregnant women	70%
Coverage of TT2 to non-pregnant women	32%
Post-natal service coverage	20%
Proportion of deliveries assisted by trained health workers	25%
Share of the annual health budget	8.2%
Coverage of tuberculosis prevention and control service	75%
Proportion of safe and adequate water supply	42%
Proportion of the population with access to excreta disposal facilities	35%
Availability of essential drugs and medical supplies in each health facility	80%
Drugs prescribed in generic name	92%
Per capita expenditures on health	6.0 USD
Blindness prevalence rate	0.6 / 10,000
HIV prevalence rate	< 7%
EPI defaulters	<10%
Defaulter rates of TB & leprosy	0%

Fig. 3 Availability of Health Personnel by Selected Professional Categories





### 3. DEMOGRAPHY & VITAL STATISTICS

#### 3.1 SOME DEMOGRAPHIC INDICATORS, 1994

Region	Population										Dependency Ratio %	Pop. Density Per Km <sup>2</sup>	Average HH Size*
	Both Sexes	Sex Ratio	Urban %	Under One %	Surviving Infants %	Under Three %	Under Five %	Female 15-49 %					
Tigray	3,901,000	96.9	17.5	3.7	3.6	7.4	17.5	23.3	91.6	77.9	4.3		
Afar	1,272,000	126.7	8.4	3.2	2.9	6.2	14.7	22.4	71.5	NA	5.7		
Amhara	17,205,000	100.1	10.7	3.7	3.5	7.3	17.2	23.3	88.3	108.1	4.5		
Oromia	23,704,000	99.6	12.3	3.9	3.7	7.6	18.1	23.2	92.0	67.1	4.8		
Somali	3,898,000	117.3	15.8	3.3	3.3	6.5	15.4	22.8	62.2	NA	6.6		
Ben.-Gumz	565,000	101.8	9.2	3.7	3.6	7.2	16.9	23.4	158.5	11.5	4.5		
SNNPR	13,293,000	98.8	8.0	4.0	3.8	7.8	18.4	23.8	90.6	118.4	4.7		
Gambella	222,000	103.7	17.6	3.3	3.1	6.5	15.2	27.0	67.7	8.6	4.5		
Hareri	172,000	102.4	61.0	3.5	3.1	6.8	15.1	26.8	63.2	552.6	4.3		
Addis Ababa	2,646,000	92.7	100.0	2.5	2.1	4.6	9.7	34.2	40.4	4,991.2	5.1		
Dire Dawa	342,000	101.2	72.8	3.7	3.3	7.2	16.0	27.6	65.2	281.9	4.7		
<b>National</b>	<b>67,220,000</b>	<b>100.6</b>	<b>15.3</b>	<b>3.7</b>	<b>3.5</b>	<b>7.3</b>	<b>17.3</b>	<b>23.8</b>	<b>86.0</b>	<b>53.7</b>	<b>4.8</b>		

Source: The 1994 G.C. Population and Housing Census of Ethiopia, Analytic Report (CSA)

### 3.2 VITAL STATISTICS, 1993-1998 (2000-05 G.C.)

Region	CBR per 1000	CDR per 1000	RNI (%)	*TFR	*IMR per 1000	*CMR per 1000	*Under 5 MR per 1000	*MMR	Male LE	Female LE
Tigray	40.4	13.7	2.7	5.8	103.6	73.0	169.0	NA	52.0	54.9
Afar	33.8	11.6	2.2	4.9	129.2	114.9	229.3	NA	56.9	50.8
Amhara	39.5	12.8	2.7	5.9	112.4	80.0	183.4	NA	53.4	56.0
Oromia	41.6	12.9	2.9	6.4	116.2	87.9	193.8	NA	53.0	55.5
Somali	36.1	9.8	2.6	5.7	99.4	94.2	184.2	NA	58.7	55.4
Benishangul	40.0	14.6	2.5	5.4	97.6	111.0	197.7	NA	50.1	51.1
SNNPR	42.6	13.4	2.9	5.9	113.4	88.2	191.5	NA	51.4	53.5
Gambella	34.8	9.1	2.6	4.5	122.6	126.0	233.2	NA	57.6	58.3
Hareri	35.6	12.0	2.4	4.4	118.3	82.4	191.0	NA	55.6	54.7
Addis Ababa	22.7	7.6	1.5	1.9	81.0	35.4	113.5	NA	60.3	64.1
Dire Dawa	37.0	11.7	2.5	3.6	105.6	78.4	175.7	NA	54.1	55.8
<b>National</b>	<b>39.9</b>	<b>12.6</b>	<b>2.7</b>	<b>5.9</b>	<b>112.9</b>	<b>84.5</b>	<b>187.8</b>	<b>871.0</b>	<b>53.4</b>	<b>55.4</b>

Source: The 1994 Population and Housing Census of Ethiopia, Analytic Report (CSA)  
\* Demographic & Health Survey, 2000

### 3.3 DEMOGRAPHIC DATA & ESTIMATES FOR SOME COUNTRIES & REGIONS OF THE WORLD

	Population (Millions)	CBR	CDR	RNI (%)	Projected Population (Millions)		IMR	TFR	% of Population of Age			LE at Birth (Years)			% of Pop. 15-49 With HIV/AIDS End-2001	GNI PPP Per Capita, 2000, (USD)
					2025	2050			<15	65+	BS	M	F			
					2025	2050			7	30	7	67	65	69		
<b>World</b>	<b>6,215.0</b>	<b>21</b>	<b>9</b>	<b>1.3</b>	<b>7,859.0</b>	<b>9,104.0</b>	<b>54</b>	<b>2.8</b>	<b>30</b>	<b>7</b>	<b>67</b>	<b>65</b>	<b>69</b>	<b>1.2</b>	<b>7,140</b>	
More Developed	1,197.0	11	10	0.1	1,249.0	1,231.0	7	1.6	18	15	76	72	79	0.4	22,060.0	
Less Developed	5,018.0	24	8	1.6	6,610.0	7,873.0	60	3.1	33	5	65	63	67	1.5	3,580.0	
Less Developed (Excl. China)	3,737.0	27	9	1.9	5,156.0	6,479.0	64	3.5	36	4	63	61	64	1.9	3,470.0	
<b>Africa</b>	<b>840.0</b>	<b>38</b>	<b>14</b>	<b>2.4</b>	<b>1,281.0</b>	<b>1,845.0</b>	<b>86</b>	<b>5.2</b>	<b>43</b>	<b>3</b>	<b>53</b>	<b>52</b>	<b>54</b>	<b>6.6</b>	<b>1,960</b>	
Sub-Saharan Africa	693.0	40	15	2.5	1,081.0	1,606.0	91	5.6	44	3	49	49	50	9.0	1,540	
Northern Africa	180.0	27	7	2.0	249.0	302.0	55	3.5	36	4	66	64	68	0.5	3,500	
Western Africa	247.0	42	15	2.7	403.0	605.0	87	5.8	45	3	51	50	51	5.0	1,030	
Eastern Africa	260.0	41	16	2.4	396.0	572.0	97	5.7	45	3	47	47	48	9.7	880	
Burundi	6.7	43	21	2.2	12.4	20.2	116	6.8	48	3	41	40	41	8.3	580	
Comoros	0.6	47	12	3.5	1.1	1.8	86	6.8	46	5	56	54	59	0.1	1,590	
Djibouti	0.7	39	19	2.0	0.8	1.1	117	5.9	43	3	43	42	44	11.8		
Eritrea	4.5	43	12	3.0	8.3	13.3	77	5.9	43	3	56	53	58	2.8	960	
<b>Ethiopia</b>	<b>67.2</b>	<b>40</b>	<b>13</b>	<b>2.7</b>	<b>117.6</b>	<b>172.7</b>	<b>113</b>	<b>5.9</b>	<b>44</b>	<b>3</b>	<b>54</b>	<b>53</b>	<b>55</b>	<b>6.4</b>	<b>660</b>	
Kenya	31.1	34	14	2.0	33.3	37.4	74	4.4	44	3	48	47	49	15.0	1,010	
Madagascar	16.9	43	13	3.0	30.8	47.0	96	5.8	45	3	55	53.0	57.0	0.3	820.0	
Malawi	10.9	46	22	2.4	12.8	15.0	104	6.5	46	3	38	37.0	38.0	15.0	600.0	
Mauritius	1.2	16	7	1.0	1.4	1.5	13.7	1.9	26	6	72	68.0	75.0	0.1	9,940.0	
Mayotte	0.2	41	10	3.1	0.4	0.6	75	5.0	47	2	60	57.0	62.0			
Mozambique	19.6	43	23	2.0	20.6	22.9	135	5.6	45	3	38	38.0	37.0	13.0	800.0	
Reunion	0.7	20	5	1.5	0.9	1.0	8	2.3	27	7	75	70.0	79.0			
Rwanda	7.4	42	21	2.2	8.0	8.9	107	5.8	44	3	39	39.0	40.0	8.9	930.0	
Seychelles	0.1	18	7	1.1	0.1	0.1	10	2.1	29	8	70	67.0	73.0			

*Cont. ...*

Cont. ....

	Population (Millions)	CBR	CDR	RNI (%)	Projected Population (*Millions)		IMR	TFR	% of Population of Age				LE at Birth (Years)				% of Pop. 15-49 With HIV/AIDS End-2001	GNI PPP Per Capita, 2000, (USD)
					2025	2050			<15	65+	BS	M	F	I	M	F		
Somalia	7.8	48	19	2.9	14.9	25.5	126	7.2	44	3	47	45.0	48.0	1.0				
Tanzania	37.2	40	13	2.7	59.8	88.3	99	5.6	45	3	52	51.0	53.0	7.8	520.0			
Uganda	24.7	48	18	3.0	48.0	84.1	88	6.9	51	2	43	42.0	44.0	5.0	1,210.0			
Zambia	10.0	42	22	2.0	14.3	20.3	95	5.7	48	3	37	37.0	37.0	21.5	750.0			
Zimbabwe	12.3	29	20	0.9	10.3	10.1	65	4.0	44	3	38	39.0	36.0	33.7	2,550.0			
Middle Africa	102.0	45	15	2.9	191.0	324.0	100	6.4	47	3	49	48	51	6.3	1,000			
Southern Africa	50.0	26	15	1.1	42.0	41.0	51	3.1	35	5	50	50	51	21.6	8,610			
<b>North America</b>	<b>319.0</b>	<b>14</b>	<b>9</b>	<b>0.6</b>	<b>382.0</b>	<b>450.0</b>	<b>6</b>	<b>2.1</b>	<b>21</b>	<b>13</b>	<b>77</b>	<b>74</b>	<b>80</b>	<b>0.6</b>	<b>33,410</b>			
<b>Latin America &amp; the Caribbean</b>	<b>531.0</b>	<b>23</b>	<b>6</b>	<b>1.7</b>	<b>697.0</b>	<b>815.0</b>	<b>30</b>	<b>2.7</b>	<b>32</b>	<b>6</b>	<b>71</b>	<b>68</b>	<b>74</b>	<b>0.7</b>	<b>6,860</b>			
Central America	140.0	27	5	2.2	188.0	225.0	28	3.1	35	5	74	71	76	0.5	7,490			
Caribbean	37.0	21	8	1.3	45.0	50.0	53	2.6	30	7	69	67	71	2.4				
South America	354.0	22	6	1.5	463.0	540.0	29	2.5	31	6	70	67	74	0.6	7,070			
<b>Asia</b>	<b>3,766.0</b>	<b>20</b>	<b>7</b>	<b>1.3</b>	<b>4,741.0</b>	<b>5,297.0</b>	<b>53</b>	<b>2.6</b>	<b>30</b>	<b>6</b>	<b>67</b>	<b>66</b>	<b>69</b>	<b>0.4</b>	<b>4,280</b>			
<b>Asia (Excl. China)</b>	<b>2,485.0</b>	<b>24</b>	<b>8</b>	<b>1.6</b>	<b>3,287.0</b>	<b>3,904.0</b>	<b>59</b>	<b>3.1</b>	<b>34</b>	<b>5</b>	<b>66</b>	<b>64</b>	<b>67</b>	<b>0.5</b>	<b>4,470</b>			
Western Asia	197.0	27	7	2.0	298.0	404.0	45	3.9	36	5	68	66	70	<0.5	5,920			
South Central Asia	1,521.0	26	9	1.8	2,047.0	2,474.0	69	3.3	37	4	63	62	63	0.6	2,370			
Southeast Asia	536.0	22	7	1.5	706.0	811.0	41	2.7	32	5	67	65	70	0.6	3,450			
East Asia	1,512.0	13	7	0.7	1,690.0	1,608.0	29	1.7	22	8	72	70	74	0.1	6,280			
<b>Europe</b>	<b>728.0</b>	<b>10</b>	<b>11</b>	<b>(0.1)</b>	<b>718.0</b>	<b>651.0</b>	<b>8</b>	<b>1.4</b>	<b>17</b>	<b>15</b>	<b>74</b>	<b>70</b>	<b>78</b>	<b>0.4</b>	<b>16,150</b>			
Northern Europe	96.0	11	10	0.1	103.0	103.0	5	1.6	19	15	78	75	80	0.1	22,960			
Western Europe	184.0	11	9	0.1	187.0	178.0	5	1.5	17	16	78	75	82	0.2	25,300			
Eastern Europe	301.0	9	14	(0.5)	279.0	231.0	13	1.2	18	13	68	63	74	0.6	7,550			
Southern Europe	147.0	10	9	0.1	149.0	139.0	6	1.3	16	17	78	75	81	0.4	17,820			
<b>Oceania</b>	<b>32.0</b>	<b>18</b>	<b>7</b>	<b>1.0</b>	<b>40.0</b>	<b>46.0</b>	<b>30</b>	<b>2.5</b>	<b>25</b>	<b>10</b>	<b>75</b>	<b>73</b>	<b>77</b>	<b>0.2</b>	<b>18,770</b>			

Source: 2002 World Population Data Sheet of the Population Reference Bureau (PRB) Book Edition, August 2002 G.C.  
N.B. All years are indicated in G.C.

## 4. EDUCATION & ECONOMIC STATISTICS

### 4.1 SCHOOL AGE POPULATION, ENROLLEMENT AND GROSS ENROLLEMENT RATIOS BY REGION AND SEX, 1994

#### A. Primary (Grade 1-8)

Region	School Age Population (7-14)		Enrollment		Gross Enrollment Ratio	
	Both Sexes	Female	Both Sexes	Female	Both Sexes	Female
Tigray	781,309	384,451	606,202	292,294	77.6	76.0
Afar	244,575	105,063	30,735	11,336	12.6	10.8
Amhara	3,380,633	1,675,571	1,964,101	899,886	58.1	53.7
Oromiya	4,759,225	2,358,317	2,969,966	1,095,652	62.4	46.5
Somali	812,612	368,155	106,572	31,315	13.1	8.5
Benishangul	114,563	56,012	102,024	37,038	89.1	66.1
SNNP	2,643,916	1,311,916	1,784,410	667,530	67.5	50.9
Gambella	40,438	19,571	41,539	15,061	102.7	77.0
Hareri	26,487	12,903	28,472	11,676	107.5	90.5
Addis Ababa	363,973	188,643	467,164	246,249	128.4	130.5
Dire Dawa	53,816	26,509	43,152	18,756	80.2	70.8
<b>National</b>	<b>13,221,547</b>	<b>6,507,111</b>	<b>8,144,337</b>	<b>3,326,793</b>	<b>61.6</b>	<b>51.1</b>

#### B. Secondary (Grade 9-10)

Region	School Age Population (15-16)		Enrollment		Gross Enrollment Ratio	
	Both Sexes	Female	Both Sexes	Female	Both Sexes	Female
Tigray	171,626	84,929	65,690	25,556	38.3	30.1
Afar	59,231	24,376	2,466	997	4.2	4.1
Amhara	743,433	367,120	89,234	37,468	12.0	10.2
Oromiya	1,051,384	518,966	166,850	59,286	15.9	11.4
Somali	194,180	84,839	5,145	857	2.6	1.0
Benishangul	25,187	12,395	4,171	1,259	16.6	10.2
SNNP	583,059	288,618	77,090	24,518	13.2	8.5
Gambella	9,904	4,842	1,652	363	16.7	7.5
Hareri	7,362	3,702	4,389	1,825	59.6	49.3
Addis Ababa	132,014	72,899	91,498	46,834	69.3	64.2
Dire Dawa	14,751	7,737	4,904	2,079	33.2	26.9
<b>National</b>	<b>2,992,131</b>	<b>1,470,423</b>	<b>513,089</b>	<b>201,042</b>	<b>17.1</b>	<b>13.7</b>

Source: Education Statistics Annual Abstract 1993, August 2002 G.C.(MOE)

#### 4.2 SOCIO-ECONOMIC DATA, 1986-1993

Million ETB.

Sr. No.	ECONOMIC INDICATORS	1986 1993/94	1987 1994/95	1988 1995/96	1989 1996/97	1990 1997/98	1991 19987/99	1992 1999/2000	1993 2000/2001	1994 2001/2002
1	Gross Domestic Expenditure	31,196.4	36,936.9	41,689.4	45,319.2	49,064.6	55,645.3	59,821.1	60,197.3	61,647.3
2	Consumption Expenditure	26,902.7	31,367.9	35,285.0	38,270.1	41,374.0	47,767.1	51,907.4	50,822.8	51,148.8
	Government	3,155.2	4,021.2	4,239.7	4,526.3	6,251.4	9,127.0	12,668.3	10,882.1	11,861.5
	Private	23,747.5	27,346.7	31,045.3	33,743.8	35,122.6	38,640.1	39,239.1	39,940.7	39,287.3
3	Gross Domestic Saving	1,426.2	2,517.1	2,652.6	3,195.0	3,466.3	654.7	(38.0)	1,171.6	976.7
4	Gross Capital Formation	4,293.7	5,569.0	6,404.4	7,049.1	7,690.6	7,878.2	7,913.7	9,374.5	10,498.5
5	GDP at Current Market	28,328.9	33,885.0	37,937.6	41,465.1	44,840.3	48,421.8	51,869.4	51,994.4	52,125.5
6	GDP at Constant Factor Cost	11,999.3	12,644.3	13,930.9	14,640.2	14,429.0	15,294.1	16,112.3	17,368.6	18,384.1
	Growth Rate (%)	1.7	5.4	10.2	5.1	(1.4)	6.0	5.3	7.8	5.8
7	<b>Health at Constant Factor Cost</b>	136.8	146.5	154.0	160.1	175.9	187.6	186.5	201.5	215.9
	Growth Rate (%)	19.3	7.1	5.1	4.0	9.9	6.7	(0.6)	8.0	7.1

Source: Ministry of Finance & Economic Development

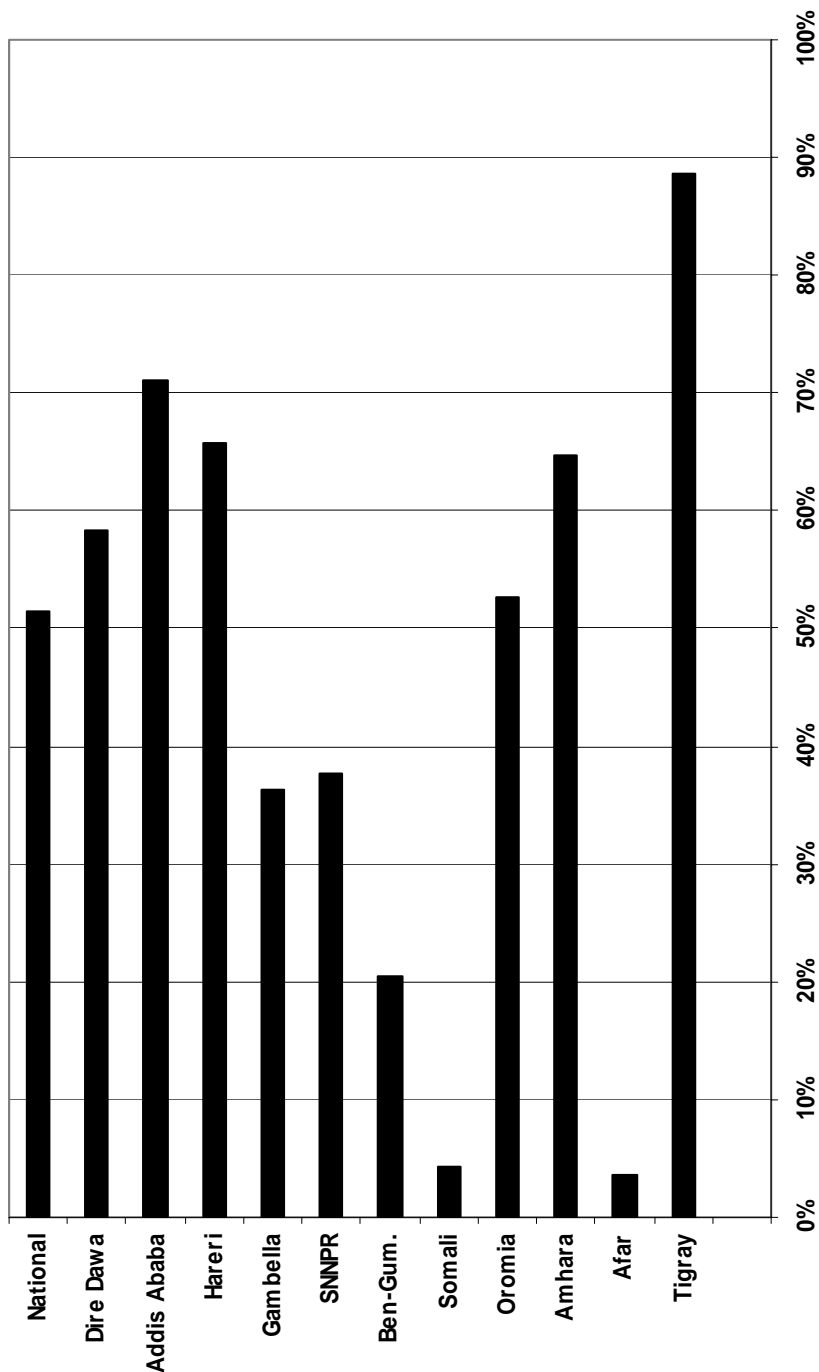
## 5. MATERNAL & CHILD HEALTH SERVICES

### 5.1 IMMUNIZATION COVERAGE BY ANTIGEN, 1994

Region	Target Population (Under 1 yr)	BCG		Surviving Infants	DPT <sub>3</sub>		Measles		Fully Immunized	
		Achieved	Cov.		Achieved	Cov.	Achieved	Cov.	Achieved	Cov.
Tigray	147,975	135,563	91.61	141,273	125,111	88.56	110,980	78.56	95,582	67.66
Afar	40,430	3,676	9.09	37,439	1,354	3.62	1,935	5.17	646	1.73
Amhara*	643,694	428,841	66.62	603,211	390,131	64.68	301,045	49.91	161,894	26.84
Oromia	936,146	606,425	64.78	871,503	458,460	52.61	364,080	41.78	301,093	34.55
Somali	129,291	9,725	7.52	126,730	5,536	4.37	5,387	4.25	990	0.78
Ben-Gum.	20,644	7,056	34.18	20,394	4,189	20.54	4,103	20.12	2,264	11.10
SNNPR	538,897	243,278	45.14	502,065	189,593	37.76	156,663	31.20	108,998	21.71
Gambella	7,430	3,250	43.74	6,778	2,460	36.29	1,610	23.75	1,214	17.91
Hareri	5,987	5,223	87.25	5,399	3,550	65.75	2,884	53.42	2,438	45.16
Addis Ababa	62,745	42,025	66.98	55,199	39,279	71.16	33,827	61.28	34,010	61.61
Dire Dawa	12,687	7,827	61.69	11,318	6,603	58.34	5,957	52.63	2,239	19.78
<b>National</b>	<b>2,545,924</b>	<b>1,492,889</b>	<b>58.64</b>	<b>2,381,309</b>	<b>1,226,266</b>	<b>51.50</b>	<b>988,471</b>	<b>41.51</b>	<b>711,368</b>	<b>29.87</b>

\* Incomplete data, extrapolated from nine months report.

Fig. 4 Immunization Coverage (DPT3) by Regions, 1994





## 5.2 DROP-OUT RATES OF ROUTINE EPI ACTIVITY, 1994

Regions	BCG-Measles	Rate	BCG-DPT3	Rate	DPT1-DPT3	Rate	DPT1-Measles	Rate
Tigray	24,583	18.13	10,452	7.71	13,221	9.56	27,352	19.77
Afar	1,741	47.36	2,322	63.17	2,164	61.51	1,583	45.00
Amhara	127,796	29.80	38,711	9.03	NA	NA	52,215	14.78
Oromia	242,345	39.96	147,965	24.40	NA	NA	NA	NA
Somali	4,338	44.61	4,189	43.07	4,507	44.88	4,656	46.36
Benishangul	2,953	41.85	2,867	40.63	3,700	46.90	3,786	47.99
SNNPR	86,615	35.60	53,685	22.07	91,876	32.64	124,806	44.34
Gambella	1,640	50.46	790	24.31	757	23.53	1,607	49.95
Hareri	2,339	44.78	1,673	32.03	1,206	25.36	1,872	39.36
Addis Ababa	8,198	19.51	2,746	6.53	3,636	8.47	9,088	21.18
Dire Dawa	1,870	23.89	1,224	15.64	91	1.36	737	11.01
<b>National</b>	<b>504,418</b>	<b>33.79</b>	<b>266,624</b>	<b>17.86</b>	<b>NA</b>	<b>NA</b>	<b>NA</b>	<b>NA</b>

### 5.3 TT2+ ACHIEVEMENT & COVERAGE BY REGION, 1994

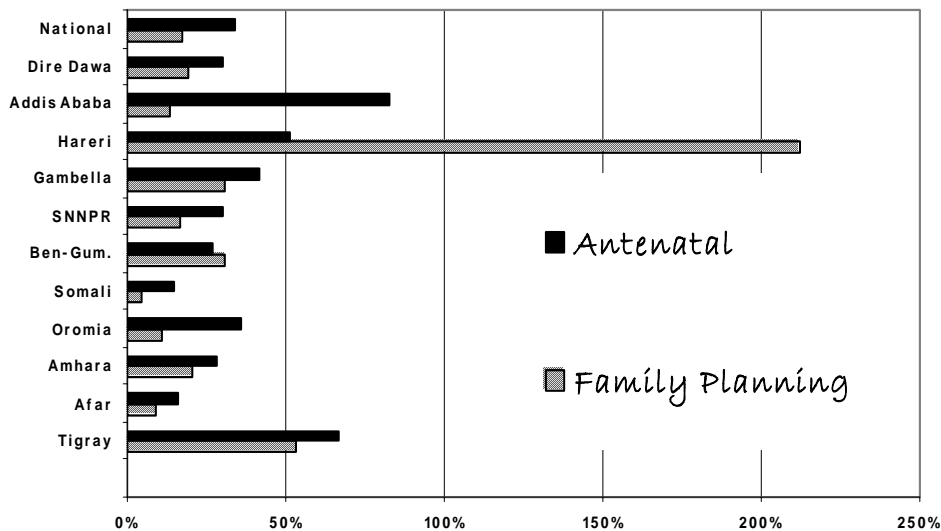
Region	TT2+ Achievement & Coverage					
	Pregnant Women			Non-Pregnant Women		
	Target Population	Achieved	Coverage	Target Population	Achieved	Coverage
Tigray	157,600	16,307	10.35	750,722	70,955	9.45
Afar	42,994	2,583	6.01	241,525	1,148	0.48
Amhara	679,598	167,919	24.71	3,324,620	598,135	17.99
Oromia	986,086	325,411	33.00	4,505,505	608,229	13.50
Somali	140,718	6,581	4.68	748,917	8,123	1.08
Ben-Gum.	22,600	2,737	12.11	109,467	6,897	6.30
SNNPR	566,282	89,842	15.87	2,594,814	109,033	4.20
Gambella	7,726	2,895	37.47	52,192	2,487	4.77
Hareri	6,123	3,982	65.03	40,044	2,766	6.91
Addis Ababa	60,064	35,600	59.27	844,746	37,554	4.45
Dire Dawa	12,654	3,642	28.78	81,770	5,676	6.94
<b>National</b>	<b>2,682,445</b>	<b>657,499</b>	<b>24.51</b>	<b>13,294,323</b>	<b>1,451,003</b>	<b>10.9</b>

#### 5.4 MATERNAL HEALTH SERVICES ACHIEVEMENT & COVERAGE BY REGION, 1994

Region	Expected Delivery/ Pregnancy	Antenatal		Attended Delivery		Postnatal Services		Non-Pregnant Women	Family Planning		
		Achieved	Coverage	Achieved	Coverage	Achieved	Coverage		New Acceptors	Continual Acceptors	Coverage
Tigray	157,600	104,948	66.59	57,782	36.66	53,956	34.24	750,722	167,907	229,591	52.95
Afar	42,994	6,833	15.89	1,203	2.80	68	0.16	241,525	9,425	12,466	9.06
Amhara	679,598	193,798	28.52	51,701	7.61	39,707	5.84	3,324,620	646,373	-	19.44
Oromia	986,086	353,192	35.82	71,816	7.28	65,388	6.63	4,505,505	336,584	165,439	11.14
Somali	140,718	20,688	14.70	7,756	5.51	1,026	0.73	748,917	15,016	17,346	4.32
Benishangul	22,600	6,147	27.20	2,062	9.12	298	1.32	109,467	12,667	20,776	30.55
SNNPR	566,282	169,381	29.91	41,246	7.28	19,983	3.53	2,594,814	200,527	225,226	16.41
Gambella	7,726	3,240	41.94	1,122	14.52	974	12.61	52,192	6,111	10,023	30.91
Hareri	6,123	3,157	51.56	1,219	19.91	56	0.91	40,044	56,346	28,501	211.88
Addis Ababa	60,064	49,779	82.88	19,590	32.62	9,443	15.72	844,746	97,339	*16,362	13.46
Dire Dawa	12,654	3,772	29.81	2,890	22.84	NA	NA	81,770	4,384	11,555	19.49
<b>National</b>	<b>2,682,445</b>	<b>914,935</b>	<b>34.11</b>	<b>258,387</b>	<b>9.63</b>	<b>190,899</b>	<b>7.12</b>	<b>13,294,323</b>	<b>1,552,679</b>	<b>737,285</b>	<b>17.23</b>

\* Incomplete data

Fig. 5 Family Planning & Antenatal Coverage



## 5.5 NUTRITIONAL STATUS OF CHILDREN & MOTHERS

Regions	%			
	Stunted	Wasted	Under Weight	Mothers BMI (kg/m <sup>2</sup> ) <18.5
Tigray	55.3	11.1	47.9	34.9
Afar	47.6	12.6	50.5	42
Amhara	57.0	9.5	51.8	31.4
Oromia	47.2	10.4	42.4	28.7
Somali	46.4	15.8	44.3	48.3
Ben - Gumuz	41.3	14.2	42.3	38.1
SNNPR	55.4	11.8	53.7	30.7
Gambella	37.0	18.1	39.0	38.7
Hareri	37.3	6.3	27.1	25.2
Addis Ababa	26.8	4.2	14.1	17.9
Dire Dawa	30.5	11.1	30.8	27.2
Urban	42.3	5.5	33.7	23.2
Rural	52.6	11.1	48.7	31.8
<b>National</b>	<b>51.5</b>	<b>10.5</b>	<b>47.2</b>	<b>30.1</b>

Source: Demographic & Health Survey, 2000

## 5.6 AMOUNT OF CONTRACEPTIVE DISTRIBUTED TO THE REGIONS BY TYPE OF CONTRACEPTIVE METHOD, 1994

Regions	Microgynon (Cycle)	Megestron (Vial)	Lo- Femeral (Cycle)	Excluton (Cycle)	Male Condoms (Each)	Female Condoms (Each)	Depo Provera (Vial)	Conceptrol Foaming (Pack)	Copper T (Pack)	Norplant (Pack)
Tigray	15,840	11,200	46,800	42,000	-	-	156,000	-	-	-
Afar	2,247,040	2,800	15,600	40,800	186,000	-	101,000	-	-	-
Amhara	760,320	47,600	208,800	415,800	300,000	-	618,000	-	-	-
Oromia	-	-	-	-	-	-	300,000	-	-	-
Somali	472,560	19,600	46,800	104,000	66,000	-	156,000	-	-	-
Benishangul	139,920	1,400	7,200	6,000	36,000	-	50,000	-	-	10
SNNPR	132,000	68,640	160,800	141,600	666,000	-	401,000	-	-	-
Gambella	-	10,560	-	10,800	48,000	-	4,000	-	-	-
Hareri	55,440	-	-	-	-	-	2,000	-	-	-
Dire Dawa	-	-	-	-	-	-	-	-	-	-
Addis Ababa	158,400	158,400	-	120,000	300,000	-	180,000	-	-	710
Others*	26,260	-	-	2,400	1,554,000	-	183,000	-	-	3,770
<b>National</b>	<b>4,007,780</b>	<b>320,200</b>	<b>486,000</b>	<b>883,400</b>	<b>3,156,000</b>	<b>-</b>	<b>2,151,000</b>	<b>-</b>	<b>-</b>	<b>4,490</b>

\* Distributed to DKT, Marie Stopes International-Ethiopia (MSI-E), Family Guidance Association of Ethiopia (FGAE)

## 5.7 PERCENTAGE OF CONTRACEPTIVE USERS BY TYPE OF CONTRACEPTIVE METHOD, 1992 –1994

Region	Pills			Depo Provera			Norplant			IUD			Condoms			Others		
	1992	1993	1994	1992	1993	1994	1992	1993	1994	1992	1993	1994	1992	1993	1994	1992	1993	1994
	Tigray	56.7	53.3	55.6	27.0	30.0	32.8	0.2	0.1	0.1	0.1	0.1	0.0	14.7	16.5	11.6	1.4	0.0
Afar	31.2	25.3	10.7	22.9	48.8	54.0	0.0	0.0	0.0	0.0	0.0	0.0	45.9	26.0	35.3	0.0	0.0	0.0
Amhara	NA	NA	73.1	NA	NA	19.0	NA	NA	0.0	0.0	0.2	NA	NA	NA	6.6	NA	NA	1.1
Oromia	58.6	62.3	58.2	30.2	26.2	30.6	0.2	0.1	0.1	0.3	0.2	0.1	10.6	11.2	11.0	0.1	0.1	0.0
Somali	34.5	28.3	87.2	8.2	11.4	5.6	0.0	0.0	0.0	0.1	0.0	0.0	27.6	60.3	7.2	29.7	0.0	0.0
B/Gum	56.6	44.3	33.5	40.6	41.9	58.5	0.0	0.0	0.0	0.0	0.0	0.0	2.8	13.8	8.0	0.0	0.0	0.0
SNNPR	64.3	0.0	53.5	26.3	0.0	39.4	0.1	0.0	0.1	0.4	0.0	0.3	8.6	0.0	6.7	0.3	0.0	0.1
Gambella	41.7	40.0	49.9	28.6	30.1	29.6	0.0	0.0	0.0	0.0	0.0	0.0	29.8	30.0	20.5	0.0	0.0	0.0
Hareri	70.0	35.0	31.8	25.5	30.3	20.3	0.0	7.1	0.1	0.3	0.1	0.2	4.3	27.6	47.7	0.0	0.0	0.0
Addis Ababa	50.9	56.7	43.6	37.9	34.6	42.5	0.2	0.2	0.4	1.0	0.4	1.4	10.0	7.3	11.6	0.0	0.9	0.6
Dire Dawa	51.0	NA	0.0	28.7	NA	0.0	0.6	NA	0.0	0.9	NA	0.0	18.9	NA	0.0	0.0	NA	0.0
<b>National</b>	<b>59.4</b>	<b>30.8</b>	<b>58.5</b>	<b>26.4</b>	<b>17.0</b>	<b>29.6</b>	<b>0.1</b>	<b>0.3</b>	<b>0.1</b>	<b>0.4</b>	<b>0.1</b>	<b>0.2</b>	<b>12.7</b>	<b>7.5</b>	<b>10.6</b>	<b>1.1</b>	<b>0.2</b>	<b>0.4</b>

## 6. HYGIENE & ENVIRONMENTAL HEALTH SERVICE

### 6.1 HYGIENE ENVIRONMENTAL HEALTH PROFILE BY REGIONS, 1994

Region	Access to Safe Water						Access to Excreta Disposal					
	Urban		Rural		Total		Urban		Rural		Total	
	Achieved	%	Achieved	%	Achieved	%	Achieved	%	Achieved	%	Achieved	%
Tigray	518,320	76.0	64,380	2.0	582,700	14.9	409,200	60.0	386,280	12.0	795,480	20.4
Afar	47,166	44.1	166,595	14.3	213,761	16.8	62,381	58.3	58,250	5.0	120,631	9.5
Amhara	1,536,000	83.6	3,488,100	22.7	5,024,100	29.2	400,000	21.8	453,000	2.9	853,000	5.0
Oromia	1,901,310	65.2	4,570,247	22.0	6,471,557	27.3	1,171,187	40.1	780,751	3.8	1,951,937	8.2
Somali	235,515	38.4	264,205	8.0	499,720	12.8	295,626	48.1	223,603	6.8	519,229	13.3
Ben-Gumuz	24,796	47.7	72,911	14.2	97,707	17.3	30,656	59.0	119,574	23.3	150,231	26.6
SNNP	701,601	66.4	2,621,949	21.4	3,323,550	25.0	402,137	38.0	537,285	4.4	939,422	7.1
Gambella	20,119	51.6	15,264	8.3	35,383	15.9	8,533	21.9	7,018	3.8	15,551	7.0
Hareri	62,599	59.6	22,044	32.9	84,642	49.2	50,721	48.3	11,730	17.5	62,451	36.3
Addis Ababa	2,603,664	98.4			2,603,664	98.4	2,116,800	80.0	-	-	2,116,800	80.0
Dire Dawa	150,892	60.6	34,389	37.0	185,281	54.2	177,520	71.3	955	1.0	178,475	52.2
<b>National</b>	<b>7,801,981</b>	<b>75.7</b>	<b>11,320,084</b>	<b>19.9</b>	<b>19,122,065</b>	<b>28.4</b>	<b>5,124,762</b>	<b>49.7</b>	<b>2,224,356</b>	<b>3.9</b>	<b>7,703,208</b>	<b>11.5</b>

Source: Survey conducted on Environmental Health Profile of Regions & Selected cities/Towns in Ethiopia, 1995

## 6.2 GLOBAL HYGIENE & ENVIRONMENTAL HEALTH SERVICE INDICATORS

	% of Population Using Improved Drinking Water Source, 1999*		% of Population Using Adequate Sanitation, 1999*	
	Total	Rural	Total	Rural
<b>WORLD</b>	81	71	57	36
<b>AFRICA</b>				
Egypt	95	94	94	91
Eritrea	46	42	13	1
<i>Ethiopia</i>	<b>24</b>	<b>13</b>	<b>15</b>	<b>6</b>
Ghana	64	49	63	64
Kenya	49	31	86	81
Morocco	82	58	75	42
Mozambique	60	43	43	26
Nigeria	57	39	63	45
Rwanda	41	40	8	8
South Africa	86	80	86	73
Sudan	75	69	62	48
Tanzania	54	42	90	86
Uganda	50	46	75	72
Zambia	64	48	78	64
Zimbabwe	85	77	68	51
<b>NORTHERN AMERICA</b>				
Canada	100	99	100	99
United State	100	100	100	100
<b>LATIN AMERICA &amp; THE CARIBBEAN</b>	<b>84</b>	<b>63</b>	<b>76</b>	<b>47</b>
Argentina	79	30	85	48
<b>ASIA</b>				
China	75	66	38	24
India	88	86	31	14
Iran	95	89	81	74
Iraq	85	48	79	31
Jordan	96	84	99	98
Pakistan	88	84	61	42
Philippines	87	80	83	71
Saudi Arabia	95	64	100	100
Syria	80	64	90	81
Turkey	83	84	91	70
Vietnam	56	50	73	70
Yemen	69	64	45	31
<b>EUROPE</b>				
Netherlands	100	100	100	100
Norway	100	100		
Russia	99	96		
Switzerland	100	100	100	100
United Kingdom	100	100	100	100
<b>OCEANIA</b>				
Australia	100	100	100	100

Source: Health & Environmental Indicators ( PRB), August 2002

\* Years indicated in G.C.



## 7. HEALTH INFRASTRUCTURE

### 7.1 POTENTIAL HEALTH SERVICE COVERAGE AND VISIT PER CAPITA, 1994

Region	Population	Facility Type				Potential Health Service Coverage (%)				Out Patient	
		Health Center (HC)	Health Station (HS)	Health Post (HP)	Private Clinics (PC)	HC, HS	HC, HS, HP	HC, HS, HSHP, PC	Total Visit	Visit per Capita	
Tigray	3,901,000	28	182	112	21	64.60	78.95	81.65	**2,103,040	0.54	
Afar	1,272,000	8	50	49	2	55.03	74.29	75.08	553,481	0.44	
Amhara	17,205,000	82	527	385	206	42.55	53.73	59.72	**2,539,317	0.15	
Oromia	23,704,000	115	952	244	435	52.29	57.44	66.61	**2,307,925	0.10	
Somali	3,898,000	17	95	82	2	35.27	45.79	46.05	NA	NA	
Ben.-Gumz	565,000	7	74	44	6	161.95	200.88	206.19	366,838	0.65	
SNNPR	13,293,000	114	357	306	183	48.30	59.81	66.69	2,095,009	0.16	
Gambella	222,000	8	33	18	9	238.74	279.28	299.55	29,802	0.13	
Hareri	172,000	6	10	7	11	145.35	165.70	197.67	139,270	0.81	
Addis Ababa	2,646,000	24	150	47	340	79.37	88.25	152.49	1,942,279	0.73	
Dire Dawa	342,000	3	22	17	20	86.26	111.11	140.35	112,243	0.33	
<b>National</b>	<b>67,220,000</b>	<b>412</b>	<b>2,452</b>	<b>1,311</b>	<b>1,235</b>	<b>51.80</b>	<b>61.55</b>	<b>*70.74</b>	<b>12,189,204</b>	<b>NA</b>	

\* Health Centers, Health Stations, Health Posts & Private Clinics are included in the calculation which consider to serve with the capacity of 25,000 , 10,000 & 5,000 patients each for Health Posts & Private Clinics, respectively.

\*\* Incomplete data

## 7.2 DISTRIBUTION OF HEALTH INFRASTRUCTURE, 1994

Region	Hospitals			Health Centers				Health Stations			Health Posts	
	MOH	Others <sup>®</sup>	Total	Beds	MOH	Others*	Total	Beds	MOH	Others*		Total
Tigray	12	2	14	1260	28	0	28	400	167	15	182	112
Afar	2	0	2	208	8	0	8	70	47	3	50	49
Amhara	15	2	17	1246	82	0	82	318	517	10	527	385
Oromia*	20	8	28	2000	112	3	115	0	770	182	952	244
Somali	6	0	6	382	11	6	17	167	94	1	95	82
Ben.-Gumz	2	0	2	254	7	0	7	254	66	8	74	44
SNNPR	11	2	13	1260	110	4	114	550	305	52	357	306
Gambella	1	0	1	93	5	3	8	0	32	1	33	18
Hareri	3	2	5	440	2	4	6	20	9	1	10	7
Addis Ababa	5	15	20	2346	20	4	24	122	6	144	150	47
Dire Dawa	1	1	2	350	3	0	3	30	5	17	22	17
Central**	4	1	5	1871	0	0	0	0	0	0	0	0
<b>National</b>	<b>82</b>	<b>33</b>	<b>115</b>	<b>11710</b>	<b>388</b>	<b>24</b>	<b>412</b>	<b>1931</b>	<b>2018</b>	<b>434</b>	<b>2452</b>	<b>1311</b>

<sup>®</sup> Includes Private Hospitals

\* Facilities owned by OGA & NGOs

\*\* Includes 5 Central hospitals (St. Paulos, St. Peter, Amanuel, ALERT & Black Lion Hospitals)

### 7.3 DISTRIBUTION OF HOSPITALS BY TYPE AND OWNERSHIP, 1994

Region	MOH			OGA	NGO	Private	Total
	Specialized Hospital	Zonal Hospital	District Hospital				
Tigray	0	5	7	0	0	2	14
Afar	0	1	1	0	0	0	2
Amhara	0	6	9	2	0	0	17
Oromia	1	13	6	4	4	0	28
Somali	0	1	5	0	0	0	6
Benishangul	0	1	1	0	0	0	2
SNNPR	0	6	5	0	2	0	13
Gambella	0	0	1	0	0	0	1
Hareri	0	2	1	2	0	0	5
Addis Ababa	0	5	0	3	2	10	20
Dire Dawa	0	0	1	1	0	0	2
Central	4	0	0	1	0	0	5
<b>National</b>	<b>5</b>	<b>40</b>	<b>37</b>	<b>13</b>	<b>8</b>	<b>12</b>	<b>115</b>

### 7.4 DISTRIBUTION OF PRIVATE OWNED CLINICS BY TYPE AND REGION, 1994

Region	Types of Clinics				Total
	Lower	Medium	Higher	Special	
Tigray	18	2	1	0	21
Afar	2	0	0	0	2
Amhara	154	40	8	4	206
Oromia*	NA	NA	NA	NA	435
Somali	0	2	0	0	2
Benishangul	5	1	0	0	6
SNNP	139	37	7	0	183
Gambella	6	3	0	0	9
Hareri	0	11	0	0	11
Addis Ababa	125	93	65	57	340
Dire Dawa	13	0	7	0	20
<b>National</b>	<b>462</b>	<b>189</b>	<b>88</b>	<b>61</b>	<b>1235</b>

\* Data is taken from 1993 report

## 7.5 DISTRIBUTION OF PHARMACEUTICAL RETAIL OUTLETS BY REGION & OWNERSHIP, 1994

Region	Pharmacies				Drug Shops				Rural Drug Vendors		
	Public	NGO	Private	Total	Public	NGO	Private	Total	NGO	Private	Total
	Tigray	0	1	14	15	14	1	10	25	0	207
Afar	0	0	1	1	0	0	4	4	0	45	45
Amhara	8	7	23	38	1	0	38	39	0	251	251
Oromia	16	8	41	65	35	2	105	142	0	813	813
Somali*	0	0	0	0	0	1	4	5	0	20	20
Benishangul	0	0	0	0	0	0	3	3	0	32	32
SNNPR	7	3	23	33	8	1	39	48	0	473	473
Gambella	0	0	0	0	1	0	1	2	0	14	14
Hareri	1	0	6	7	0	0	3	3	0	3	3
Addis Ababa	10	0	128	138	1	0	38	39	0	8	8
Diredawa	2	0	12	14	1	0	3	4	0	10	10
<b>National</b>	<b>44</b>	<b>19</b>	<b>248</b>	<b>311</b>	<b>61</b>	<b>5</b>	<b>248</b>	<b>314</b>	<b>0</b>	<b>1876</b>	<b>1876</b>

\* Data is taken from 1993 report

## 8. HUMAN RESOURCES

### 8.1 HEALTH HUMAN RESOURCE DISTRIBUTION BY REGION AND SEX, 1994

Profession	Tig	Afar	Amh	Orom	Som	Ben	SNNP	Gam	Har	A/A	DD	Cent	NGO	OGA	Private <sup>@</sup>	Total
Physicians	66	12	188	320	49	19	163	14	35	235	40	233	32	239	246	1888
Female	NA	0	9	34	0	1	11	0	6	72	3	36	5	NA	32	NA
Health Officers	62	10	90	94	10	12	80	10	3	7	4	9	1	67	25	484
Female	NA	1	9	8	2	1	10	0	1	2	0	3	0	NA	2	NA
Pharmacists	6	1	13	11	3	2	18	2	3	4	2	15	1	32	5	118
Female	NA	0	1	0	0	0	2	0	0	2	0	4	0	NA	4	NA
Nurses	1008	195	1553	2327	345	212	1299	156	129	781	130	575	109	3862	157	12838
Female	NA	36	584	892	85	48	335	25	33	567	73	349	54	NA	93	NA
Env. Health W.	88	11	299	276	32	33	0	13	8	61	77	23	1	49	0	971
Female	NA	0	23	23	2	2	0	1	1	9	37	5	0	NA	0	NA
Lab. Tech.	111	22	208	289	40	26	261	10	23	91	8	43	18	385	160	1695
Female	NA	2	18	40	1	2	26	3	8	25	4	4	3	NA	42	NA
Radiographer	16	0	29	53	6	5	8	0	3	27	2	25	3	50	20	247
Female	NA	0	1	12	0	0	0	0	1	2	1	6	0	NA	6	NA
Pharm. Tech.	77	16	70	122	16	10	98	9	12	64	9	19	5	258	8	793
Female	NA	2	18	21	2	0	13	0	3	20	0	6	0	NA	5	NA
Health Ass.	1087	66	1617	2538	185	135	1126	65	64	412	5	258	225	115	251	8149
Female	NA	14	461	705	35	14	232	8	32	250	1	151	44	NA	93	NA
*FLHW	3073	113	702	345	205	95	469	39	42	25	9	0	6	4927	0	10050
Female	NA	35	332	167	73	37	103	0	15	22	1	0	2	NA	0	NA

\* FLHW includes CHA, TBA, and PHW

@ Data is available only for Addis Ababa region. (Health Professionals working under private Health Facilities)

## 8.2 DISTRIBUTION OF PHYSICIANS BY SPECIALIZATION AND REGION, 1994

Region	Tig	Afar	Amh	Orom	Som	Ben	SNNP	Gam	Har	A/A	DD	Cent	NGO	OGA	Private*	Total
<b>Total</b>	66	12	188	317	49	19	163	14	35	235	40	233	32	239	246	1888
<b>Specialists</b>	27	0	34	41	19	0	21	0	6	88	14	157	14	112	119	652
Internists	3	0	3	2	1	0	1	0	1	13	1	34	1	18	24	102
Surgeons	4	0	7	7	2	0	5	0	1	14	3	21	1	23	14	102
Pediatricians	4	0	4	7	3	0	3	0	1	8	2	13	1	14	10	70
Gynaecologists	2	0	7	9	1	0	5	0	1	17	4	17	1	9	20	93
Ophthalmologists	2	0	4	3	1	0	2	0	0	9	1	7	1	5	11	46
Orthopedists	0	0	2	0	0	0	0	0	0	2	0	4	1	5	3	17
ENT Specialists	0	0	0	1	0	0	0	0	0	5	0	3	0	6	2	17
Anaesthesiologists	0	0	1	0	0	0	0	0	1	2	1	5	0	6	1	17
Dentists	0	0	1	1	1	0	0	0	0	1	0	1	0	2	25	32
Radiologists	2	0	1	2	1	0	1	0	1	6	1	9	0	5	5	34
Physiotherapists	0	0	0	1	0	0	0	0	0	0	0	9	0	2	0	12
Neurologists	0	0	0	0	0	0	0	0	0	2	0	2	0	2	1	7
Public Health	10	0	4	3	9	0	4	0	0	7	1	13	8	5	0	64
Dermatologists	0	0	0	2	0	0	0	0	0	2	0	6	0	4	3	17
Psychiatrists	0	0	0	3	0	0	0	0	0	0	0	8	0	2	0	13
Pathologists	0	0	0	0	0	0	0	0	0	0	0	5	0	4	0	9
<b>General Practitioners</b>	39	12	154	276	30	19	142	14	29	147	26	76	18	127	127	1236

\* Data is available only for Addis Ababa region. (Health Professionals working under private Health Facilities)

### 8.3 DISTRIBUTION OF NURSES BY SPECIALTY, REGION AND SEX, 1994

Region	Nurse B.Sc.		Mid-Wife Nurse		Psychiatry Nurse		Anaesthist Nurse		MCH Nurse		Dental Nurse		Clinical Nurse		Public Health N.		Staff Nurse		Other Nurses *		Total		
	BS	F	BS	F	BS	F	BS	F	BS	F	BS	F	BS	F	BS	F	BS	F	BS	F	BS	F	
	Tigray	5	NA	123	NA	4	NA	21	NA	2	NA	0	0	853	NA	0	0	0	0	0	0	0	1008
Afar	0	0	28	6	0	0	0	0	0	0	0	0	140	25	20	2	0	0	0	7	3	195	36
Amhara	5	2	113	62	8	3	13	4	8	0	6	2	593	236	177	59	630	216	0	0	0	1553	584
Oromia	31	7	111	74	12	5	11	2	20	13	8	2	819	333	63	23	1252	433	0	0	0	2327	892
Somali	1	0	34	31	0	0	3	0	0	0	1	0	271	50	23	3	4	0	8	1	345	85	
Ben.-Gumuz	0	0	25	12	2	0	3	1	0	0	2	0	139	31	35	3	0	0	6	1	212	48	
SNNPR	2	0	144	67	10	2	14	2	4	1	4	0	1012	244	106	19	0	0	3	0	0	1299	335
Gambella	1	0	3	1	1	0	0	0	1	0	2	1	124	16	24	7	0	0	0	0	0	156	25
Hareri	0	0	16	7	1	1	3	0	2	1	1	0	72	15	11	2	21	7	2	0	129	33	
Addis Ababa	4	3	189	171	0	0	31	18	12	11	1	1	86	47	29	13	408	288	21	15	781	567	
Dire Dawa	2	0	5	2	0	0	1	1	4	2	0	0	19	13	15	10	1	0	83	45	130	73	
Central	10	7	27	27	10	6	20	10	7	6	1	1	129	82	0	0	192	115	179	95	575	349	
NGO	9	3	9	2	0	0	0	0	1	0	2	1	34	17	2	1	47	28	5	2	109	54	
OGA	20	7	30	6	14	3	93	4	0	0	8	3	3419	36	16	6	50	39	212	NA	3862	NA	
Private**	0	0	5	5	0	0	11	7	3	1	0	0	0	0	0	0	135	77	3	3	157	93	
<b>National</b>	<b>90</b>	<b>29</b>	<b>862</b>	<b>473</b>	<b>62</b>	<b>20</b>	<b>224</b>	<b>49</b>	<b>64</b>	<b>35</b>	<b>36</b>	<b>11</b>	<b>7710</b>	<b>1145</b>	<b>521</b>	<b>148</b>	<b>2740</b>	<b>1203</b>	<b>529</b>	<b>NA</b>	<b>12838</b>	<b>NA</b>	

\* Includes Tutor, Surgical, Ophthalmic, OR, & Pediatric Nurses

\*\* Data is available only for Addis Ababa region. (Health Professionals working under private Health Facilities)

### 8.4 HEALTH PROFESSIONALS POPULATION RATIO BY REGION, 1994

Region	Population	Physician**			Nurse			Health Assistant		Environmental Health Worker	
		No.	Ratio	*Index	No.	Ratio	*Index	No.	Ratio	No.	Ratio
Tigray	3,901,000	128	30,477	3.05	1,008	3,870	0.77	1,087	3,589	88	44,330
Afar	1,272,000	22	57,818	5.78	195	6,523	1.30	66	19,273	11	115,636
Amhara	17,205,000	278	61,888	6.19	1,553	11,079	2.22	1,617	10,640	299	57,542
Oromia	23,704,000	411	57,674	5.77	2,327	10,187	2.04	2,538	9,340	276	85,884
Somali	3,898,000	59	66,068	6.61	345	11,299	2.26	185	21,070	32	121,813
Benishangul	565,000	31	18,226	1.82	212	2,665	0.53	135	4,185	33	17,121
SNNPR	13,293,000	243	54,704	5.47	1,299	10,233	2.05	1,126	11,806	-	-
Gambella	222,000	24	9,250	0.93	156	1,423	0.28	65	3,415	13	17,077
Hareri	172,000	38	4,526	0.45	129	1,333	0.27	64	2,688	8	21,500
Addis Ababa	2,646,000	242	10,934	1.09	781	3,388	0.68	412	6,422	61	43,377
Dire Dawa	342,000	44	7,773	0.78	130	2,631	0.53	5	68,400	77	4,442
Central	-	242	-	-	575	-	-	258	-	23	-
NGO	-	33	-	-	109	-	-	125	-	1	-
OGA	-	306	-	-	3,862	-	-	115	-	49	-
Private	-	271	-	-	157	-	-	351	-	-	-
<b>National</b>	<b>67,220,000</b>	<b>2,372</b>	<b>28,339</b>	<b>2.83</b>	<b>12,838</b>	<b>5,236</b>	<b>1.05</b>	<b>8,149</b>	<b>8,249</b>	<b>971</b>	<b>69,228</b>
<b>WHO Standard</b>			<b>1:10,000</b>			<b>1:5,000</b>					

\* An adjustment factor needed to reach the standard.

\*\* The number of physicians include 477 health officers



## 9. BUDGET ALLOCATION & EXPENDITURE

### 9.1 RECURRENT HEALTH BUDGET ALLOCATION & EXPENDITURE BY REGION, 1994

Region	*Budget	Expenditure	% Expenditure
Tigray	44,020,000		
Afar	14,199,300		
Amhara	89,007,800		
Oromia	144,875,500		
Somali	18,705,600		
Ben-Gum	12,999,600		
SNNPR	64,637,900		
Gambella	7,198,200		
Hareri	9,186,600		
Addis Ababa	68,384,700		
Dire Dawa	14,375,000		
Federal MOH	62,018,300		
<b>National</b>	<b>549,608,500</b>		

### 9.2 CAPITAL HEALTH BUDGET ALLOCATION & EXPENDITURE BY REGION, 1994

Region	**Budget	Expenditure	% Expenditure
Tigray	32,871,410		
Afar	16,298,520		
Amhara	98,846,980		
Oromia	121,983,000		
Somali	55,946,960		
Ben-Gum	3,808,205		
SNNPR	73,021,500		
Gambella	7,314,100		
Hareri	5,992,100		
A/Ababa	51,898,510		
Dire Dawa	5,649,400		
Federal MOH	29,934,900		
<b>National</b>	<b>503,565,585</b>		

\* Original budgets

\*\* The figures are compiled from regional report.

Source: Ministry of Finance & Economic Development

### 9.3 HEALTH EXPENDITURE PER CAPITA BY REGION, 1994

Region	Population 1994	Budget Allocation	Total Expenditure	Per Capita
Tigray	3,901,000	76,891,410		
Afar	1,272,000	30,497,820		
Amhara	17,205,000	187,854,780		
Oromia	23,704,000	266,858,500		
Somali	3,898,000	74,652,560		
Ben-Gum	565,000	16,807,805		
SNNPR	13,293,000	137,659,400		
Gambella	222,000	14,512,300		
Hareri	172,000	15,178,700		
Addis Ababa	2,646,000	120,283,210		
Dire Dawa	342,000	20,024,400		
Federal MOH	-	91,953,200		
<b>National</b>	<b>67,220,000</b>	<b>1,053,174,085</b>		

### 9.4 NATIONAL RECURRENT BUDGET ALLOCATION & EXPENDITURE, 1980-1994

Year	Recurrent			
	Allocation	Expenditure	% Expenditure	% National
1980	133,157,111	117,645,563	88.4	3.5
1981	103,560,009	73,967,816	71.4	2.4
1982	75,507,467	56,890,315	75.3	1.5
1983	159,062,394	128,398,802	80.7	3.4
1984	160,799,956	151,508,560	94.2	4.1
1985	196,655,412	189,093,097	96.2	6.2
1986	300,921,100	257,700,000	85.7	6.5
1987	337,850,000	310,210,000	91.8	5.7
1988	357,040,000	328,060,000	91.9	6.1
1989	362,590,000	333,340,000	91.9	6.0
1990	379,800,000	394,264,000	103.8	5.5
1991	478,870,000	455,807,000	95.2	5.6
1992	406,799,000	398,412,486	98.0	3.5
1993	466,110,000	444,380,000	95.3	4.0
1994	549,608,500	NA	NA	NA

Source: Ministry of Finance & Economic Development

## 9.5 NATIONAL CAPITAL BUDGET ALLOCATION & EXPENDITURE, 1980-1994

Year	Capital			
	Allocation	Expenditure	% Expenditure	% National
1980	54,511,358	37,035,181	67.94	2.42
1981	65,989,537	43,712,369	66.24	2.13
1982	63,657,463	41,816,479	65.69	2.31
1983	48,914,848	32,083,363	65.59	2.18
1984	63,014,122	37,390,162	59.34	3.60
1985	68,185,200	66,800,000	97.97	4.59
1986	211,012,822	68,548,811	32.49	5.51
1987	224,690,000	119,960,000	53.39	4.50
1988	262,300,000	153,890,000	58.67	5.02
1989	307,098,736	216,420,000	70.47	5.93
1990	354,200,000	276,910,000	78.18	6.59
1991	303,100,000	648,390,000	213.92	4.91
1992	360,537,000	176,700,000	49.01	4.75
1993	756,220,000	305,350,000	40.4	13.6
1994	503,565,585	NA	NA	NA

Source: Ministry of Finance & Economic Development

## 10. DISEASE STATISTICS

### 10.1 MALARIA CASES BY PARASITE SPECIES

Year	Region	Exam	Positive	P.f.	P.v.	P.m.	Mixed
1988	Tigray	87,674	31,457	25,254	6,208	0	0
	Afar	32,558	13,917	10,373	3,444	0	0
	Amhara	271,156	135,651	93,233	42,435	135	159
	Oromia	370,574	150,425	92,813	57,627	28	57
	Somali	5,299	1,307	1,117	86	0	4
	Ben-Gum	88,193	32,373	25,587	6,745	26	7
	SNNPR	227,914	102,541	58,209	44,238	32	19
	Gambella	27,620	10,740	9,332	1,204	203	1
	<b>Total</b>	<b>1,110,988</b>	<b>478,411</b>	<b>315,918</b>	<b>161,987</b>	<b>424</b>	<b>247</b>
		<b>%</b>	<b>43.1</b>	<b>66.0</b>	<b>33.9</b>	<b>0.1</b>	<b>0.1</b>
1989	Tigray	83,623	29,448	22,284	6,998	0	0
	Afar	33,597	15,305	10,792	4,513	0	0
	Amhara	246,483	124,547	73,737	49,923	69	88
	Oromia	397,341	182,963	105,832	69,084	45	93
	Somali	12,293	2,628	1,924	704	0	0
	Ben-Gum	31,783	6,739	4,662	2,003	0	0
	SNNPR	270,170	136,354	69,934	66,402	1,774	1,756
	Gambella	27,830	11,820	8,601	3,119	91	9
	<b>Total</b>	<b>1,103,120</b>	<b>509,804</b>	<b>297,766</b>	<b>202,746</b>	<b>1,979</b>	<b>1,946</b>
		<b>%</b>	<b>46.2</b>	<b>58.4</b>	<b>39.8</b>	<b>0.4</b>	<b>0.4</b>
1990	Tigray	166,510	68,363	50,002	18,297	0	0
	Afar	47,410	22,414	13,483	8,931	0	0
	Amhara	244,635	117,535	71,769	45,637	64	65
	Oromia	526,897	238,503	155,591	78,813	21	145
	Somali	11,769	5,947	5,478	469	0	0
	Ben-Gum	19,521	4,548	3,276	1,274	0	0
	SNNPR	258,848	136,608	74,884	61,638	0	0
	Gambella	30,269	11,042	10,081	760	193	8
	<b>Total</b>	<b>1,305,859</b>	<b>604,960</b>	<b>384,564</b>	<b>215,819</b>	<b>278</b>	<b>218</b>
		<b>%</b>	<b>46.3</b>	<b>63.6</b>	<b>35.7</b>	<b>0.1</b>	<b>0.1</b>
1991	Tigray	125,517	55,323	35,201	20,115	7	91
	Afar	55,276	26,264	15,345	10,419	0	0
	Amhara	286,185	147,773	92,575	55,231	103	95
	Oromia	598,162	269,897	162,702	104,331	23	109
	Somali	21,305	10,500	9,180	1,317	0	3
	Ben-Gum	34,498	12,765	7,296	5,467	2	0
	SNNPR	224,779	113,897	53,611	59,089	112	1,085
	Gambella	23,145	9,269	8,268	918	27	0
	Hareri	9,597	2,231	2,026	203	0	2
	<b>Total</b>	<b>1,378,464</b>	<b>647,919</b>	<b>386,204</b>	<b>257,090</b>	<b>274</b>	<b>1,385</b>
	<b>%</b>	<b>47.0</b>	<b>59.6</b>	<b>39.7</b>	<b>0.1</b>	<b>0.2</b>	

Year	Region	Exam	Positive*	P.f.	P.v.	P.m.	Mixed
1992	Tigray	219,972	30,376	22,237	17,673		77
	Afar	NA	NA	NA	NA	NA	NA
	Amhara	458,474	89,077	50,228	4,059	NA	NA
	Oromia	467,907	136,873	68,269	66,306	44	24
	Somali	26,660	NA	NA	NA	NA	NA
	Ben-Gum	11025	5857	3,903	1,856	1	
	SNNPR	332,738	61,079	28,876	31,103	78	577
	Gambella	NA	7,271	NA	NA	NA	NA
	Hareri	NA	2,274	1895	379	NA	NA
	Dire Dawa	NA	2,290	1523	767	NA	NA
	<b>Total</b>	<b>1,516,776</b>	<b>335,097</b>	<b>176,931</b>	<b>122,143</b>	<b>123</b>	<b>678</b>
	<b>%</b>	<b>22.1</b>	<b>52.8</b>	<b>36.5</b>	<b>0.0</b>	<b>0.2</b>	
1993	Tigray	72,725	17,527	8,428	9,099	-	-
	Afar	91,724	47,474	33,247	14,227	-	-
	Amhara	410,859	88,817	49,209	39,294	107	207
	Oromia	354,942	140,158	75,683	64,318	107	50
	Somali	16,754	3,433	3,309	124	-	-
	Ben-Gumuz	17,127	4,157	2,431	1,723	3	-
	SNNP	172,426	82,486	55,310	26,780	133	263
	Gambella	20,771	10,305	9,031	1,254	20	-
	Hareri	7,947	2,675	2,277	398	-	-
	Addis Ababa	NA	NA	NA	NA	NA	NA
	Dire Dawa	4,452	3,339	1,627	1,712	-	-
<b>Total</b>	<b>1,169,727</b>	<b>400,371</b>	<b>240,552</b>	<b>158,929</b>	<b>370</b>	<b>520</b>	
	<b>%</b>	<b>34.2</b>	<b>60.1</b>	<b>39.7</b>	<b>0.1</b>	<b>0.1</b>	
1994	Tigray	89,862	23,348	14,857	8,462	4	72
	Afar	82,760	49,865	27,546	22,319	-	-
	Amhara*	202,411	64,929	44,250	20,978	9	263
	Oromia	390,804	164,208	73,044	63,042	31	260
	Somali	27,038	14,498	13,659	838	-	1
	Ben-Gumuz	16,397	4,769	256	4,513	-	-
	SNNP*	191,003	88,521	51,321	35,349	104	1,744
	Gambella*	23,608	7,598	6,585	966	45	2
	Hareri	22,174	6,062	5,614	368	-	-
	Addis Ababa	NA	937	NA	NA	NA	NA
	Dire Dawa	16,387	3,096	1,818	1,278	-	-
<b>Total</b>	<b>1,062,444</b>	<b>427,831</b>	<b>238,950</b>	<b>158,113</b>	<b>193</b>	<b>2,342</b>	
	<b>%</b>	<b>40.27</b>	<b>55.85</b>	<b>36.96</b>	<b>0.05</b>	<b>0.55</b>	

\* Incomplete data

**10.2 TUBERCULOSIS AND LEPROSY**  
**10.2.1 TUBERCULOSIS CASE FINDINGS, 1994**

Regions	Pulmonary Smear Positive						Pulmonary Smear Negative		Extra-Pulmonary		Total Cases
	Cases	%	New	RLPS	FAIL	DEFT	Cases	%	Cases	%	
	Tigray	2,101	20.50	1,939	126	15	21	3,785	36.93	4,362	
Afar	467	32.30	349	47	23	48	619	42.81	360	24.90	1,446
Amhara	7,013	32.25	6,515	328	71	99	6,244	28.71	8,492	39.05	21,749
Oromia	13,025	35.04	12,447	361	76	141	10,647	28.64	13,500	36.32	37,172
Somali	1,363	53.47	1,215	94	33	21	567	22.24	619	24.28	2,549
Benishangul	145	21.67	144	1	-	-	259	38.71	265	39.61	669
SNNP	8,669	50.68	8,359	161	44	105	3,731	21.81	4,707	27.52	17,107
Gambella	327	35.89	273	25	-	29	394	43.25	190	20.86	911
Hareri	206	20.68	195	7	2	2	476	47.79	314	31.53	996
Addis Ababa	4,378	34.44	3,911	390	30	47	4,591	36.12	3,743	29.44	12,712
Dire Dawa	597	28.88	568	14	9	6	884	42.77	586	28.35	2,067
<b>Total</b>	<b>38,291</b>	<b>35.58</b>	<b>35,915</b>	<b>1,554</b>	<b>303</b>	<b>519</b>	<b>32,197</b>	<b>29.92</b>	<b>37,138</b>	<b>34.51</b>	<b>107,626</b>

Remark: Data includes only from DOTS implementing zones

## 10.2.2 TUBERCULOSIS RESULTS OF TREATMENT 1992/1993

### A. PATIENTS ON SHORT COURSE CHEMOTHERAPY

Regions	Total	Cured	Completed	Success Rate	% Died	% Fail	% Default	% Transferred
Tigray	1712	1167	209	80.43	7.13	0.99	7.59	3.91
Amhara	3523	2353	475	80.30	7.98	0.97	6.10	4.68
Oromia	10271	6800	1586	81.66	6.30	0.53	9.22	2.31
Somali	1396	1070	26	78.58	5.37	2.94	9.53	3.65
SNNP	7461	4364	1768	82.20	5.15	1.05	6.77	4.85
Hareri	218	180	0	83.03	3.21	0.92	3.67	9.63
Addis Ababa	3668	2618	345	80.81	9.05	1.50	5.59	3.08
Dire Dawa	711	462	131	83.54	4.78	2.39	5.06	4.36
<b>Total</b>	<b>28960</b>	<b>19014</b>	<b>4540</b>	<b>81.33</b>	<b>6.50</b>	<b>1.03</b>	<b>7.52</b>	<b>3.62</b>

### B. PATIENTS ON LONG COURSE CHEMOTHERAPY

Regions	Total	Cured	Completed	Success Rate	% Died	% Fail	% Default	% Transferred
Tigray	129	22	67	68.99	10.08	0.00	20.16	0.78
Amhara	563	217	167	68.21	7.64	0.89	21.85	1.42
Oromia	145	70	52	84.14	4.14	0.69	8.28	2.76
Somali	27	23	0	85.19	3.70	3.70	7.41	0.00
SNNP	698	281	223	72.21	4.58	2.15	17.62	3.44
Hareri	0	0	0	0	0	0	0	0
Addis Ababa	0	0	0	0	0	0	0	0
Dire Dawa	0	0	0	0	0	0	0	0
<b>Total</b>	<b>1562</b>	<b>613</b>	<b>509</b>	<b>71.83</b>	<b>6.08</b>	<b>1.41</b>	<b>18.31</b>	<b>2.37</b>

Remark: Data includes only from DOTS implementing zones

\* Hareri & Dire Dawa are not included in long course chemotherapy area

### 10.2.3 LEPROSY CASE FINDINGS, 1994

Regions	Total Cases			New Cases			Relapses			Defaulter			Others		
	All	PB %	MB %	All	PB %	MB %	All	PB %	MB %	All	PB %	MB %	All	PB %	MB %
Tigray	122	3.3	96.7	104	3.8	96.2	15	0.0	100.0	0	-	-	3	0.0	100.0
Afar	17	29.4	70.6	11	45.5	54.5	0	-	-	6	0.0	100.0	0	-	-
Amhara	1685	18.9	81.1	1553	19.1	80.9	8	0.0	100.0	52	5.8	94.2	72	25.0	75.0
Oromiya	2577	10.4	89.6	2291	10.9	89.1	99	2.0	98.0	109	7.3	92.7	78	11.5	88.5
Somali	23	0.0	100.0	23	0.0	100.0	0	-	-	0	-	-	0	-	-
SNNP	600	11.8	88.2	500	11.2	88.8	33	6.1	93.9	43	30.2	69.8	24	0.0	100.0
Benshangul	39	2.6	97.4	39	2.6	97.4	0	-	-	-	-	-	0	-	-
Gambella	339	24.8	75.2	253	25.3	74.7	11	18.2	81.8	59	20.3	79.7	16	37.5	62.5
Harrari	28	3.6	96.4	25	4.0	96.0	1	0.0	100.0	2	0.0	100.0	0	-	-
Addis Ababa	122	6.6	93.4	111	5.4	94.6	4	0.0	100.0	2	50.0	50.0	0	-	-
Dire Dawa	32	9.4	90.6	32	9.4	90.6	0	-	-	-	-	-	0	-	-
<b>Total</b>	<b>5584</b>	<b>13.7</b>	<b>86.3</b>	<b>4942</b>	<b>13.9</b>	<b>86.1</b>	<b>171</b>	<b>3.5</b>	<b>96.5</b>	<b>273</b>	<b>13.6</b>	<b>86.4</b>	<b>193</b>	<b>17.1</b>	<b>82.9</b>



**10.3 NATIONAL SURVEILLANCE SYSTEM & EPIDEMIC REPORT, 1994**  
**10.3.1 ANNUAL REPORT OF EPIDEMIC DISEASE, 1994**

Regions	Tigray		Afar		Amhara		Oromia		Somali		Benishangul		SNNP		Gambella		National			
	Cases	*D	Cases	D	Cases	D	Cases	D	Cases	D	Cases	D	Cases	D	Cases	D	Cases	D		
Meningitis	282	27	10	2	1030	46	480	12	0	0	0	161	19	3045	138	29	6	5037	250	
Cholera	0	0	4670	35	0	0	0	0	0	0	0	0	0	0	0	0	0	0	4670	35
Antrax	0	0	0	0	0	0	38	2	0	0	0	0	0	0	0	0	0	0	38	2
Measles	0	0	0	0	0	0	116	3	7	0	0	0	0	0	0	0	0	0	123	3
Typhus	0	0	0	0	0	0	77	0	0	0	0	0	0	0	0	0	0	0	77	0
Typhoid F.	0	0	0	0	0	0	240	0	0	0	0	0	0	0	0	0	0	0	240	0
RF	0	0	0	0	0	0	343	13	0	0	0	0	0	101	2	0	0	0	444	15
ADD	0	0	0	0	0	0	0	0	567	65	0	0	0	0	0	0	0	0	567	65
BD	0	0	0	0	0	0	0	0	251	1	0	0	0	0	0	0	0	0	251	1
Dysentery	0	0	0	0	0	0	0	0	123	2	0	0	0	0	0	0	0	0	123	2
Malaria	0	0	0	0	0	0	0	0	110	3	0	0	0	0	0	0	0	0	110	3

*D: Death*

## 10.3.2 IDS REPORT,1994

### A. Annual report by region compiled from weekly reportable diseases

Region	Cholera		Plague		Yellow Fever		M.Meningitis		Measles		AFP /Polio		NNT	
	Case	*D	Case	D	Case	D	Case	D	Case	D	Case	D	Case	D
Tigray	0	0	0	0	0	0	276	19	54	0	70	0	0	0
Afar	119	0	0	0	0	0	56	5	212	2	14	0	3	0
Amhara	0	0	0	0	0	0	402	20	803	5	159	0	0	0
Oromia	0	0	0	0	0	0	989	57	372	4	173	0	17	3
Somali	43	0	0	0	0	0	104	8	145	0	35	0	3	0
Benishangul	0	0	0	0	0	0	34	2	573	0	6	0	0	0
SNNP	0	0	0	0	0	0	94	15	6	0	12	0	2	2
Gambella	0	0	0	0	0	0	184	19	239	1	133	0	18	8
Hareri	0	0	0	0	0	0	29	0	7	1	3	0	3	0
Addis Ababa	0	0	0	0	0	0	61	3	117	0	39	0	0	0
Dire Dawa	0	0	0	0	0	0	23	4	34	0	4	0	0	0
<b>National</b>	<b>162</b>	<b>0</b>	<b>0</b>	<b>0</b>	<b>0</b>	<b>0</b>	<b>2,252</b>	<b>152</b>	<b>2,562</b>	<b>13</b>	<b>648</b>	<b>0</b>	<b>46</b>	<b>13</b>

### B. Annual report by region compiled from monthly reportable diseases

Region	B. Dysentery		Malaria		Rabies		T.Fever		R.Fever	
	Case	*D	Case	D	Case	D	Case	D	Case	D
Tigray	12,682	16	51,521	146	1,081	1	307	-	64	-
Afar	3,738	-	57,499	22	1	-	555	1	186	-
Amhara	7,052	30	90,756	179	57	2	4,018	2	330	1
Oromia	18,966	17	149,931	173	1,885	7	10,940	23	2,504	19
Somali	7,313	81	20,338	99	31	2	751	3	-	-
Benishangul	2,846	-	62,393	77	2	-	943	-	1	-
SNNP	2,335	3	34,396	198	12	-	771	6	-	-
Gambella	6,443	15	124,793	339	39	2	5,684	12	2,530	22
Hareri	308	2	8,692	48	10	-	82	4	15	1
Addis Ababa	2,435	1	937	-	3	-	4,741	-	274	-
Dire Dawa	581	1	6,443	44	-	-	43	1	2	-
<b>National</b>	<b>64,699</b>	<b>166</b>	<b>607,699</b>	<b>1,325</b>	<b>3,121</b>	<b>14</b>	<b>28,835</b>	<b>52</b>	<b>5,906</b>	<b>43</b>

D: Death

### C. Annual report by region compiled from quarterly reportable diseases

Region	AIDS		G. Worm		TBC		Leprosy		STDs	
	Case	D	Case	D	Case	D	Case	D	Case	D
Tigray	394	-	-	-	4,359	40	142	-	4,696	-
Afar	406	1	-	-	1,801	4	19	-	8,843	-
Amhara	1,364	19	-	-	13,291	103	593	-	20,502	-
Oromia	2,928	4	-	-	26,394	186	1,576	2	9,299	-
Somali	68	8			3,092	43	58	-	2,250	2
Benishangul	117	5	-	-	579	25	36	-	804	-
SNNP	59	1	6	-	570	20	212	-	1,413	-
Gambella	650	-	36	-	6,926	53	398	-	2,499	-
Hareri	310	1	-	-	767	6	11	-	424	-
Addis Ababa	1,883	19	-	-	8,931	9	235	-	7,767	-
Dire Dawa	234	4	-	-	1,679	34	25	-	126	-
<b>National</b>	<b>8,413</b>	<b>62</b>	<b>42</b>	<b>-</b>	<b>68,389</b>	<b>523</b>	<b>3,305</b>	<b>2</b>	<b>58,623</b>	<b>2</b>

### 10.4 REGIONAL REPORTED HIV/AIDS CASES

Region	Cases					
	1997 G.C.	1998 G.C.	1999 G.C.	2000 G.C.	2001 G.C.	Cum. Total
Tigray	NA	1,018	1,208	1,877	1,825	6,982
Afar	0	0	0	77	78	155
Amhara	0	321	2054	1044	1,074	16738
Oromia	3,065	3,248	2,207	1,962	2,640	26,017
Somali	17	0	0	0	27	162
Benishangul Gumuz	0	129	374	28	63	624
SNNPR	1,560	1,206	1,095	1,332	1,149	12,871
Gambella				102	89	743
Hareri	470	400	237	475	482	3,710
Addis Ababa	3344	3246	3251	22859	4,050	41,795
Dire Dawa	441	149	262	227	213	3,776
<b>National</b>	<b>8,897</b>	<b>9,717</b>	<b>10,688</b>	<b>29,983</b>	<b>11,690</b>	<b>113,573</b>

# 11. OUTPUT FROM HEALTH PROFESSIONAL TRAINING SCHOOLS

## 11.1 SUMMARY OF GRADUATES

Professions	1990		1991		1992		1993		1994	
	BS	F	BS	F	BS	F	BS	F	BS	F
Medical Doctor	140	8	136	14	152	8	128	11	152	18
Health Officer	83	9	79	9	157	27	181	27	183	26
Pharmacist	31	3	34	1	31	0	54	10	17	7
Nurse B.Sc.	15	4	27	6	25	4	31	13	28	9
Senior Clinical Nurse	434	NA	588	225	364	111	711	234	433	171
Junior Clinical Nurse	339	NA	348	147	512	180	882	344	669	326
Senior Public Health Nurse	51	NA	140	43	209	67	155	44	124	73
Junior Public Health Nurse	143	NA	152	61	131	38	106	18	70	29
Senior Mid Wife Nurse	14	7	53	29	36	23	87	43	56	17
Junior Midwife Nurse	133	NA	108	58	122	72	192	103	140	117
Senior Pharmacy Technician	34	6	34	6	67	14	101	13	99	21
Junior Pharmacy Technician	20	NA	29	7	62	18	105	23	47	12
Laboratory Technologist	15	0	13	0	21	0	15	2	23	3
Senior Laboratory Technician	104	NA	195	26	211	27	249	16	223	20
Junior Laboratory Technician	26	NA	75	23	79	41	199	57	69	13
Environmental Health Technologist	20	0	20	0	20	0	21	0	26	1
Senior Environmental Health Technician	116	NA	172	12	161	24	145	14	135	32
Junior Environmental Health Technician	21	NA	12	6	9	2	9	3	0	0
Senior Radiography Technician	15	0	18	0	0	0	19	2	0	0
Junior Radiography Technician	0	0	11	0	10	0	0	0	0	0
<b>Total</b>	<b>1754</b>	<b>NA</b>	<b>2244</b>	<b>673</b>	<b>2379</b>	<b>656</b>	<b>3390</b>	<b>977</b>	<b>2494</b>	<b>895</b>

## 11.2 DISTRIBUTION OF HEALTH TRAINING SCHOOLS (Type & Number of graduates )

### A. Graduates of Health Professionals from Higher Education

No	Training School		Award	Graduates					
	Name	Type		1992		1993		1994	
				BS	F	BS	F	BS	F
1	Addis Ababa University	Medicine	MD	57	3	57	3	50	4
		Pharmacist	B.Pharm.	31	0	54	10	13	7
		Pharmacist	M.Sc.					4	
		Anaesthesiology	B.Sc.					4	
		Clinical Nurse	Diploma			110	30	86	49
		Mid wife Nurse	Diploma			17	8	16	4
		Laboratory Tech	Diploma	61	0	57	4	44	6
		Radiographer Technician	Diploma			19	2		
2	Gonder College of Medical Science	Medicine	MD	53	2	34	4	49	4
		Post Basic Health officer	B.Sc.	43	8	42	4	46	7
		Clinical Nurse	Diploma	31	7	81	9	68	38
		Public Health Nurse	Diploma	71	25	45	9	25	21
		Midwife Nurse	Diploma			29	7		
		Lab.technician	Diploma	47	9	63	3	48	5
		Environmental Health	Diploma	48	1	44	3	38	4
		Pharmacy Tech.	Diploma					42	6
3	Jimma University (Institute of Health Science)	Medicine	MD	42	3	37	4	53	10
		Post Basic Health officer	B.Sc.	44	9	54	5	47	4
		Post Basic Nursing	B.Sc.	25	4	31	13	28	9
		Post Basic Env. Health	B.Sc.	20	0	21	0	26	1
		Post Basic Lab-Techn.	B.Sc.	21	0	15	2	23	3
		Clinical Nurse	Diploma	34	5	32	7	20	9
		Public Health Nurse	Diploma	29	12	37	13	16	10
		Pharmacy Tech.	Diploma	53	13	82	8	37	9
		Lab-technician	Diploma	31	5	46	4	46	3
		Environmental Health	Diploma	40	11	36	6	35	11
4	Alemaya University	Health officer	B.Sc.	37	6	50	10	47	12
		Public Health Nurse	Diploma	38	10	43	9	40	22
		Lab-technician	Diploma	42	7	47	4	42	3
		Environmental Health	Diploma	31	1	36	5	25	6
5	Debub University	Health officer	B.Sc.	33	4	35	8	43	3
		Clinical Nurse	Diploma			15	1	47	11
		Public Health Nurse	Diploma	71	20	30	13	43	20
		Lab.technician	Diploma	30	6	36	1	43	3
		Environmental Health	Diploma	42	11	29	0	37	11
<b>Total</b>				<b>1105</b>	<b>182</b>	<b>1364</b>	<b>209</b>	<b>1231</b>	<b>315</b>

## B. Graduates of Health Professionals from Senior Training Schools

No	Training School		Award	Graduates					
	Name	Type		1992		1993		1994	
				BS	F	BS	F	BS	F
1	Nekemte	Clinical nurse	Diploma	60	9	67	21	70	20
2	Mekele	Clinical nurse	Diploma	116	38	126	45	38	14
		Pharmacy Tech.	Diploma	14	1	19	5	20	6
3	Assela	Clinical nurse	Diploma	67	23	85	32	74	23
4	Harar	Clinical nurse	Diploma	32	14	48	12	58	26
		Mid-wife Nurse	Diploma	17	14	14	11	13	6
5	Yirgalem	Clinical nurse	Diploma	24	15	20	11	30	7
6	Awassa	Mid-wife nurse	Diploma	19	9	53	7	27	7
		Clinical nurse*	Diploma						
		Public Health Nurse*	Diploma						
7	Menilik II *	Clinical nurse	Diploma						
		Public Health Nurse	Diploma						
		Mid-wife Nurse	Diploma						
		Env. Health Tech.	Diploma						
		Pharmacy tech.	Diploma						
		Lab. Technician	Diploma						
12	Debretabor *	Radiographer techn	Diploma						
		Clinical nurse	Diploma						
		Public Health Nurse	Diploma						
		Mid-wife Nurse	Diploma						
<b>Total</b>				<b>349</b>	<b>123</b>	<b>432</b>	<b>144</b>	<b>330</b>	<b>109</b>

## C. Graduates of Health Professionals from Junior Training School

No	Training School		Award	Graduates					
	Name	Type		1992		1993		1994	
				BS	F	BS	F	BS	F
1	Awassa	Clinical nurse*	Certificate	27	8	20	1		
		Public Health Nurse*	Certificate	18	2	3	22		
		Mid-wife Nurse*	Certificate			62	13		
		Lab. technician	Certificate	27	20	37	15	21	7
2	Arbaminch	Clinical nurse	Certificate	33	3	70	12	35	8
		Public Health Nurse	Certificate					22	8
3	Hosanna	Clinical nurse	Certificate	58	19	62	13	54	27
		Mid-wife Nurse	Certificate	39	15	37	15	48	26
4	Shashemene	Clinical nurse	Certificate	15	7	15	3	31	21
		Public Health Nurse	Certificate	13	3	124	61	14	5
		Mid-wife Nurse	Certificate	13	10	34	5	20	19
		Pharmacy Tech.	Certificate	21	6	42	18	29	11
5	Mettu	Lab. Technician	Certificate					17	4
		Clinical nurse	Certificate	16	5	15	6	30	12
6	Goba	Public Health Nurse	Certificate	15	6	59	37	8	5
		Clinical nurse	Certificate	26	17	136	60	62	39
		Public Health Nurse	Certificate	26	8	12	1	20	7
		Mid-wife Nurse	Certificate	27	20	41	33	33	33

\* Programmes upgraded to diploma level & graduates are expected in mid 1995

Cont....

No	Training School		Award	Graduates					
	Name	Type		1992		1993		1994	
				BS	F	BS	F	BS	F
7	Menilik II*	Clinical nurse	Certificate	26	15	35	16		
		Public Health Nurse	Certificate	17	6				
		Mid-wife Nurse	Certificate	24	14				
		Env. Health Tech.	Certificate			22	19		
		Pharmacy tech.	Certificate	24	9	28	10		
		Lab. Technician	Certificate	23	9	28	10		
		Radiographer techn	Certificate	10	0				
8	Debretabor*	Clinical nurse	Certificate	26	12	32	16		
		Public Health Nurse	Certificate	28	11	23	5		
		Mid-wife Nurse	Certificate						
9	Borena	Clinical nurse	Certificate	57	18	154	48	49	17
10	Dessie	Clinical nurse	Certificate	78	14	58	30	108	21
		Public Health Nurse**	Certificate	14	2	21	2		
		Mid-wife Nurse**	Certificate	14	8	15	6		
		Pharmacy tech.	Certificate					21	5
11	Axum	Clinical nurse	Certificate	55	28	56	20	163	150
		Public Health Nurse	Certificate	0	0	9	3		
		Mid-wife Nurse	Certificate	5	5	29	6	32	32
		Lab. tech.	Certificate	15	9	48	21		
		Environmental health	Certificate	9	2	9	3		
12	Bahir Dar	Clinical nurse	Certificate	36	19	19	13	75	18
		Public Health Nurse**	Certificate	0	0	19	2		
		Mid-wife Nurse**	Certificate						
		Pharmacy tech.	Certificate	17	3	15	1	18	1
		Lab. Technician	Certificate	14	3	19	2	21	1
13	Jijiga	Clinical nurse	Certificate	39	8	50	7	48	9
		Midwife nurse	Certificate			6	6	7	7
		Lab. Technician	Certificate					10	1
14	Debreberhan	Clinical nurse	Certificate	20	7	27	11	26	5
15	Gambella	Clinical nurse	Certificate					14	4
		Public Health Nurse	Certificate					6	4
16	Pawie***	Clinical nurse	Certificate						
		Public Health Nurse	Certificate						
		Midwife nurse	Certificate						
<b>Total</b>				<b>925</b>	<b>351</b>	<b>1491</b>	<b>572</b>	<b>1042</b>	<b>507</b>

\* Programmes upgraded to diploma level

\*\* Programmes are closed

\*\*\* New institute started in 1994

### 11.3 POST BASIC AND POST GRADUATES

Training Programme	Training Type	Training Institution	Number of Graduates					
			1992		1993		1994	
			BS	F	BS	F	BS	F
<i>Post Graduate Studies</i>	Anesthesiology	<i>Faculty of Medicine</i>	3	0	2	0	1	
	Public Health		6	1	15	0	30	5
	Internal Medicine		6	1	6	0	10	
	Obstetrics & Gyn.		9	1	9	0	8	
	Ophthalmology		3	0	3	1	4	
	Orthopedics		1	0	1	0	2	
	Pathology		4	0	1	0	4	
	Pediatrics & Child Health		9	1	9	1	10	2
	Pharmacology		4	0	0	0		
	Surgery		9	0	11	0	13	
	Radiology		4	0	4	1	5	1
<b>Total</b>		<b>58</b>	<b>4</b>	<b>61</b>	<b>3</b>	<b>87</b>	<b>8</b>	
<i>Post Basic Diploma</i>	Psychiatry Nurse	Amanuel Hosp	25		27	15	27	18
	Nurse Anesthesia	Black Lion Hosp.	28		26	12		
	Ophthalmic Nurse	ALERT Hosp.			21	11	20	18
	<b>Total</b>		<b>53</b>	<b>0</b>	<b>74</b>	<b>38</b>	<b>47</b>	<b>36</b>



# **GLOSSARY**

## **Age dependency ratio**

The ratio of persons in the “dependent” ages (under 15 and older than 64 years) to those in the “economically productive” ages (15-64 years) in a population.

## **Antenatal coverage**

A coverage to a health institution made by a pregnant woman to be sure that she has a safe pregnancy.

## **Average household size**

The mean number of members per household

## **Child woman ratio**

The number of children under age five per 1,000 women of childbearing age in a given year. This measure is used as a rough fertility indicator, especially when detailed data on births are lacking.

## **Contraceptive prevalence rate**

The proportion of eligible women (15-49 years old) who got contraceptive service.

## **Crude birth rate**

The number of births in a population during a specified period divided by the number of person-years-lived by the population during the same period. It is frequently expressed as births per 1,000 population.

## **Crude death rate**

The number of deaths in a population during a specified period divided by the number of person-years-lived by the population during the same period. It is frequently expressed as births per 1,000 population.

## **Delivery attended**

The service given for a pregnant woman during labor; management of normal delivery and detection of complications, management of risk cases in labor and complicated cases.

## **Demography**

The study of population and its characteristics, with reference to such factors as size, age structure, density, fertility, mortality, growth and social

and economic variables.

### **Discharged patient**

The number of patients who are discharged from the health institution (whether it is dead or alive) after being diagnosed and/or treated.

### **Drug shop**

Shall mean an establishment which offers for sale to the public. Such medical preparations, cosmetics nursing and sanitary articles, dietetic products and other articles as approved for the purpose by the Ministry but does not engage in the compounding preparation or manufacture of any medical preparation.

### **Enrolment ratio**

The number of students attending a given school, divided by the total number of persons of the age normally in school at that level.

### **Fully immunized**

A child of age under one who has taken all types of antigens completely.

### **General fertility rate**

The number of births occurring in a given year per 1000 women in the reproductive ages (i.e. women aged 15-49).

### **Health center**

Establishment which provides both preventive and curative out-patient care. Health Centre is also responsible for training CHAs & TBAs.

### **Health post**

One of the satellite facility in the Primary Health Care Unit

### **Health stations**

The smallest health units in the conventional Health Service structure and are staffed with 1-3 health assistants.

### **Higher clinic**

Staffed at least by a general medical practitioner, a specialist and assisted by various specialists serve for general outpatient clinics. For emergency and delivery this clinic has up to 5 beds.

### **Hospital**

An establishment with at least 25 beds that provides general medical care

round the clock. It is at least equipped with basic laboratory, X-ray and basic treatment facilities. It is staffed with at least one medical practitioner.

### **Household**

A single person living alone or a group voluntarily living together, having common house keeping arrangements for supplying basic living needs, such as principal meals. The group may consist of related or unrelated persons.

### **Infant mortality rate**

The ratio of the number of deaths under one year of age occurring in a given year to the number of births in the same year. Also used in a more rigorous sense to mean the number of deaths that would occur under one year of age in a life table with a radix of 1,000.

### **Infant mortality**

The probability of dying between birth and age one per 1000 live births in a given year.

### **In-patient**

A patient who is admitted and occupy bed in a health institution for diagnosis and/or treatment.

### **Life Expectancy at Birth**

The average number of years a newborn infant can expect to live under current mortality levels.

### **Live birth**

The complete expulsion or extraction from its mother of conception, irrespective of the duration of pregnancy, which after such separation shows any evidence of life.

### **Lower clinic**

Staffed at least by a health assistant or a nurse and serve for general outpatient clinic.

### **Maternal mortality rate**

A measure of a woman's risk of dying from causes associated with pregnancy.

## **Medium Clinic**

Staffed at least by health officer or general medical practitioner & serve for general medical services.

## **Morbidity**

The extent of illness, injury or disability in a population.

## **Out-patient**

A patient who receive ambulatory care (examination and treatment) with out being admitted or occupying a bed.

## **Pharmacy**

Any store, shop or other place in which medicinal preparation are compounded or prepared and dispensed or sold to the public.

## **Postnatal visits**

Visits made by a mother to a HCU or visited by a health worker (at home) within the first 45 days after giving birth.

## **Potential health service coverage**

The population covered in percentage based on the existing health centers and health stations in catchment's area.

## **Rate of national increase**

The difference between the births and deaths occurring during a given period divided by the number person-year lived by the population during the same period. This rate, which specifically excludes changes resulting from migration, is equal to the difference between the crude birth rate and the crude death rate.

## **Rural drug vendor**

The lowest level of medicinal retail outlet that dispenses medical preparations as approved for this level by the Ministry, but does not engage in compounding preparation or manufacturing of any medical preparation.

## **School enrolment**

The number of students who are enrolled and attend various educational institutions.

## **Sex ratio**

The number of males in a population or specific sub-population, divided by corresponding number of females, conventionally multiplied by 100.

## **Special clinic**

Provides specific medical interventions such as medical, surgical, obstetric gyn, ophthalmology, etc. and is assisted by specialists in various disciplines.

## **Total fertility rate**

The average number of children that would be born per woman of all women lived to end of their childbearing years and born children according to a given set of age specific fertility rates.

## **Under-five mortality**

The probability of dying between birth and age five per 1000 live births.

## **Under 5 children**

Under 5 year children visits to health institution for monitoring of growth and development, screening of risk cases, and for management of disease or mal development.

## **Vital events**

Births, deaths, marriages and divorces.

## **GNI PPP per capita**

GNI PPP per capita is Gross National Income in purchasing power parity (PPP) divided by midyear population. GNI PPP refers to Gross National Income converted to “international” dollars using a purchasing power parity conversion factor. International dollars indicate the amount of goods & services one could buy in the United States with a given amount of money.