

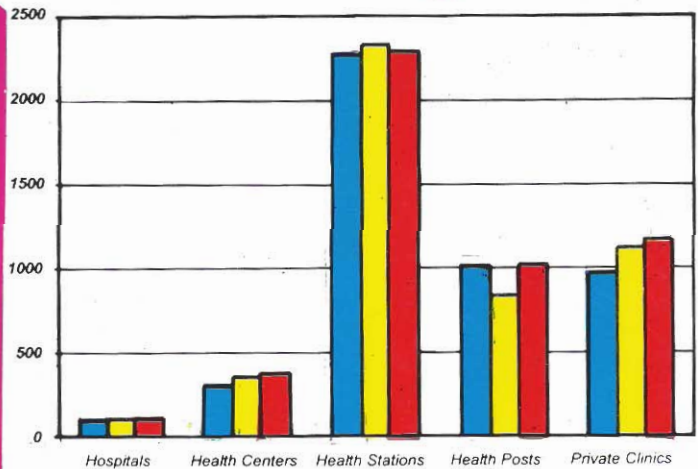


በኢትዮጵያ ፌዴራላዊ ዲሞክራሲያዊ ሪፐብሊክ
የጤና ጥበቃ ሚኒስቴር
Federal Democratic Republic of Ethiopia
Ministry of Health

Health and Health Related **INDICATORS**

1
9
9
3

■ 1991 ■ 1992 ■ 1993



Planning and Programming Department, MOH

Health and Health Related
INDICATORS

*1993 E.C.
(2000/01 G.C.)*

Planning and Programming Department

Health Information Processing & Documentation Team

Explanatory Notes

All years in this annual publication, unless otherwise stated, are in Ethiopian calendar.

The following symbols have been used in the tables throughout the report:

- A blank in a table indicates that the item is not applicable.
- A number in parenthesis () indicates a negative number.
- NA in a table indicates data is not available



*Cover page design and camera ready copy
by
Health Information Processing & Documentation
Team*

Copyright © Planning and Programming Department, MOH

December 2001

Fax: (251)(1)512691

Phone: (251)(1)151791

e-mail: moh@telecom.net.et

PREFACE

One of the basic characteristic of the Health Sector Development Programme (HSDP) is its effectiveness in the planning, implementation and monitoring of the health sector activities. The growing need for careful planning, strong implementation and systematic monitoring has given more significance to the availability of adequate and timely information. It could also be seen that remarkable improvement has been seen in the quality and quantity of information available during this period of HSDP showing a positive effect.

Much effort have been put to improve the quality and scope of the data used in this issue. Current and previous years coverage indicators that needed population data have been adjusted based on “The 1994 Population and Housing Census of Ethiopia, Volume II Analytical Report.”

It is hoped that this publication will serve as a useful and quick reference for policy markers and planners as one of the tools for the design of future development plan, monitoring and evaluation. It is also hoped that this publication will meet the needs of researchers and those interested in the health sector.

Among the sources of information used for the preparation of this publication are:

1. The 1994 (G.C) population and Housing Census of Ethiopia, Analytical Reports
2. The Ethiopian Population Profile: 1999 G.C.
3. Educational Statistics: Annual Abstract, 2000
4. Regional Health Bureaus of the country.
5. Concerned department of MOH, MEDaC, and MOF.
6. International Health Related Publications

As part of its main activities, the Planning and Programming Department will continue to update the publication annually.

Comments and suggestions are welcome and should be addressed to:

Planning and Programming Department

F.O. Box 1234

Ministry of Health

Acknowledgements are due to all those, whose invaluable comments and suggestions have made it possible the completion of this publication on time.

Health Information Processing & Documentation Team

ACRONYMS

ADD	Acute Diarrhea Diseases
AIDS	Acquired Human Immunodeficiency Syndrome
ARI	Acute Respiratory Infection
BCG	Bacille Calmette Guerin
B. Dysentery	Bacillary Dysentery
CSA	Central Statistical authority
CBR	Crude Birth Rate
CDR	Crude Death Rate
CHA	Community Health Agent
CMR	Child mortality Rate
CNS	Central Nervous System
CPR	Contraceptive Prevalence Rate
DEF	Defaulters
DPT	Diphtheria, Pertusis and Tetanus
ENT	Ear, Nose & Throat
EPI	Expanded Programme on Immunization
ETB	Ethiopian Birr
E. Typhus	Epidemic Typhus
FLE	Female Life Expectancy
FP	Family Planning
GDP	Gross Domestic Product
GFR	General Fertility Rate
GNP	Gross National Product
GPI	Gender Parity Index
G. Worm	Guinea Worm
H/Ass.	Health Assistant
HC	Health Center
HCU	Health Care Unit
HH	House Hold
HIV	Human Immunodeficiency Virus
HO	Health Officer
HP	Health Post
HSDP	Health Sector Development Programme
IMR	Infant Mortality Rate
IDS	International Disease Surveillance

IUCD	Intra Uterine Contraceptive Device
LB	Live Birth
MB	Multibacillary
MLE	Male Life Expectancy
MCH	Maternal and Child Health
MD	Medical Doctor
M. Meningitis	Meningococcal Meningitis
MMR	Maternal Mortality Rate
MOH	Ministry of Health
MPH	Masters of Public Health
NGO	Non Governmental Organization
NNT	Neonatal Tetanus
NRS	National Regional States
Ob.Gyn	Obstetric & Gynecology
OGA	Other Government Agency
OPD	Out-patient Department
OPV	Oral Polio vaccine
ORT	Oral Rehydration therapy
PB	Paucibacillary
PF	Plasmodium Falciparum
PM	Plasmodium Malaria
PV	Plasmodium Vivax
PHCU	Primary Health Care Unit
PHRD	Policy & Human Resource Development
PHS	Potential Health Service
R. Fever	Relapsing Fever
RLPS	Relapse
RNI	Rate of Natural Increase
ROW	Rest of the World
SNNPR	Southern Nations & Nationalities Peoples Region
STD	Sexually Transmitted Disease
TB	Tuberculosis
TBA	Traditional Birth Attendant
TFR	Total Fertility Rate
TT	Tetanus Toxoid
URTI	Upper Respiratory Tract Infection
WHO	World Health Organization

TABLE OF CONTENTS

Preface	i
Acronyms	iii
Introduction	1
Organizational Structure of Federal Ministry of Health	2
1. Summary Of Basic Health Indicators	3
2. Major Health Sector Development Targets	5
3. Demography & Vital Statistics	7
3.1 Some Demographic Indicators, 1993	7
3.2 Vital Statistics, 1993– 1998 (2000—05 G.C.)	8
3.3 Demographic Data & Estimates for Some Countries & Regions of the World.....	9
4. Education & Economic Statistics	11
4.1 School Age Population, Enrollment And Gross Enrollment Ratios By Region And Sex, 1993	11
4.2 Socio-Economic Data, 1984-1993.....	12
5. Maternal & Child Health Services	13
5.1 Immunization Coverage By Antigen, 1993.....	13
5.2 Drop-out Rates of Routine EPI Activity, 1993	15
5.3 TT2+ Achievement & Coverage By Region, 1993.....	16
5.4 Maternal Health Services Achievement & Coverage By Region, 1993	17
5.5 Amount of Contraceptive Distributed to the Regions.....	19
5.6 Percentage of Contraceptive Users by Type of Contraceptive Method	20
6. Health Infrastructure	21
6.1 Potential Health Service Coverage And Visit Per Capita, 1993.....	21
6.2 Distribution Of Health Infrastructure, 1993	22
6.3 Distribution of Hospitals by Type and Ownership, 1993	23
6.4 Distribution Of Private Owned Clinics By Type And Region, 1993	23
6.5 Distribution Of Pharmaceutical Retail Outlets By Region & Ownership, 1993	24

7. Human Resources	25
7.1 Health Human Resource Distributions By Region & Sex	25
7.2 Distribution Of Physicians By Specialization & Region.....	26
7.3 Distribution Of Nurses By Specialty, Region & Sex.....	27
7.4 Health Professionals Population Ratio By Region	28
8. Budget Allocation & Expenditure	29
8.1 Recurrent Health Budget Allocation & Expenditure By Region, 1993	29
8.2 Capital Health Budget Allocation & Expenditure By Region, 1993.....	29
8.3 Health Expenditure Per Capita By Region, 1993	30
8.4 National Recurrent Budget Allocation & Expenditure 1980-1993	30
8.5 National Capital Budget Allocation & Expenditure 1980-1993.....	31
9. Disease Statistics.....	32
9.1 Number of Inpatients, Days, Deaths & Beds, 1993.....	32
9.2 Leading Causes of Outpatient Visit, 1993	33
9.3 Leading Causes of Admission, 1993.....	33
9.4 Leading Causes of Deaths, 1993.....	33
9.5 Malaria Situation	34
9.6 Tuberculosis and Leprosy.....	36
9.6.1 Tuberculosis Case Finding, 1993.....	36
9.6.2 Tuberculosis Results of Treatment 1991/1992.....	37
9.6.3 Leprosy Case finding, 1993	38
9.7 National Surveillance System IDS Report.....	39
9.8 HIV/ AIDS Cases	40
9.8.1 Regional Reported AIDS Cases	40
9.8.2 Global Surveillance of HIV/AIDS Cases	41
10. Output From Health Professional Training School	43
10.1 Summary Of Graduates	43
10.2 Distribution Of Health Training Schools.....	44
10.3 Post Basic And Post Graduates	46
Glossary.....	47

INTRODUCTION

The current area of Ethiopia is estimated at about 1.1 million square kilometers and a current population of 65.3 million, of which more than 55.5 million (85.0 percent) live in rural areas. Ethiopia is a Federal Democratic Republic composed of 9 National Regional States (NRS) including Tigray, Afar, Amhara, Oromia, Somalia, Benishangul-Gumuz, Southern Nations, Nationalities and Peoples Region (SNNPR), Gambella and Harari, Administrative states (Addis Ababa city administration and Dire Dawa council)

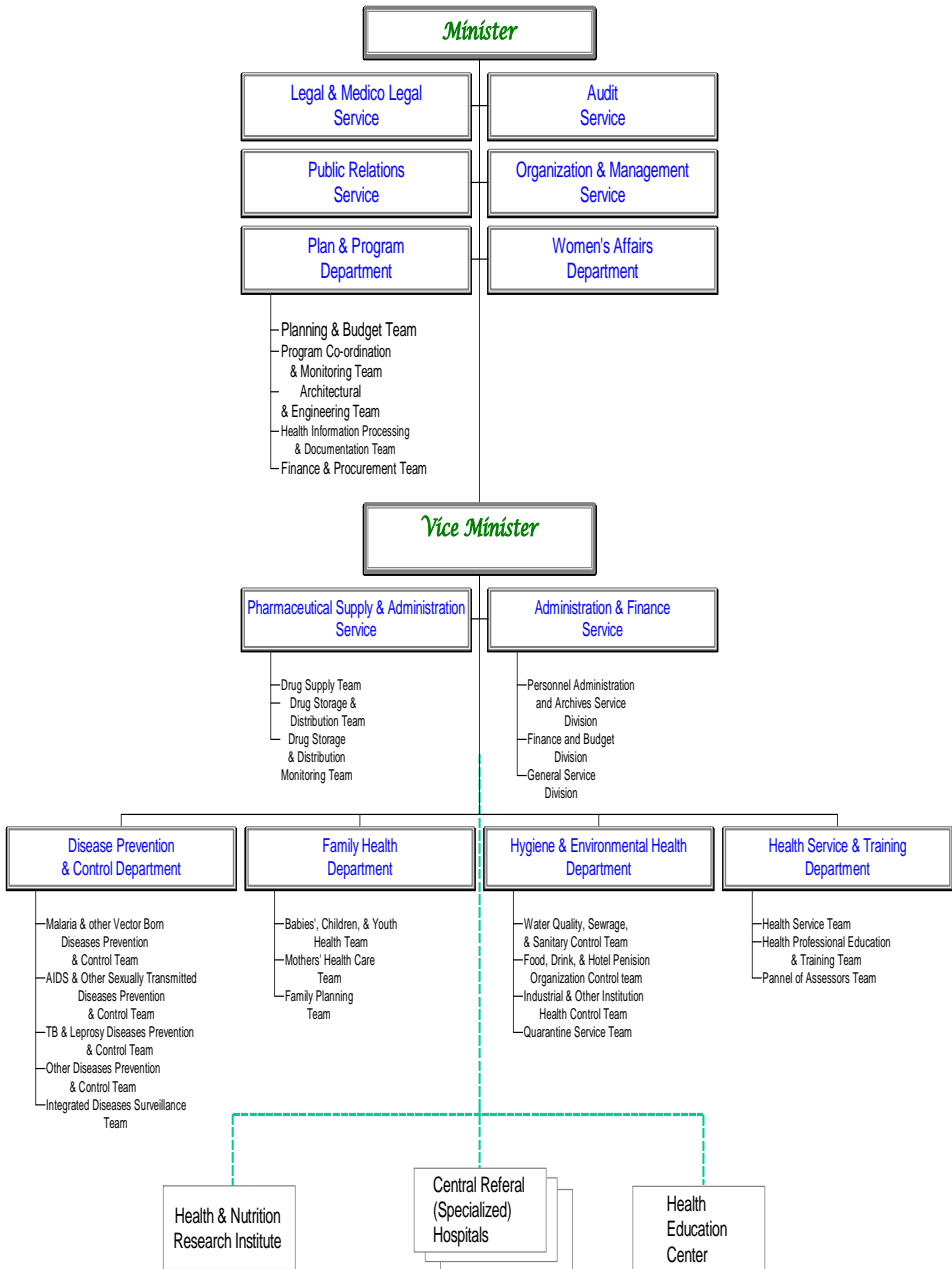
The National Regional States as well as the Administrative states are further divided into sixty six Zones, five hundred twenty-three woredas and about 10,000 kebeles. There are also two zones and eleven woredas classified as special.

An estimated 60 to 80 percent of health problems are due to infectious and communicable diseases and nutritional problems. The system is underdeveloped and able to provide health to only about half of the population. Much of the rural population has no access to modern health care, leading to inability of the health care delivery systems to respond quantitatively or qualitatively to the health needs of the people. Previously, the health delivery system was highly centralized; delivered in a fragmented way and relied on vertical programs; and there was little collaboration between the public and private sectors. Consequently, the Ethiopian Transitional and Federal Governments have initiated political, economic and social changes resulting in the formulation of the 1985-Health Policy and Strategy. The Federal Government and the regional authorities are trying to reorganize health services into a more cost-effective and efficient system better able to contribute to the overall socio-economic development effort of the country.

The Government plans to realize its health development objective through a twenty-year health development strategy, with a series of five-year investment programs, of which the first Health Sector Development Program (HSDP) covers the period 1990 - 1994. The HSDP proposes a sector wide approach to achieve the Government's objectives.

The HSDP, like the National Health Policy, is the result of a critical examination of the nature, magnitude and root causes of the prevailing health problems of the country and awareness of newly emerging health problems. Founded on a commitment to democracy and to decentralization, it accords appropriate emphasis to the needs of the less privileged rural population which constitute the overwhelming majority of the population and it proposes realistic goals and the means for attaining them. In so doing, the Government accords health a prominent place in its order of priorities and commits itself to the attainment of these goals utilizing all accessible internal and external resources.

The Federal Ministry of Health



December 2001

1. SUMMARY OF BASIC HEALTH INDICATORS

Indicator	1989	1990	1991	1992	1993
Total Population	58,117,000	59,882,000	61,672,000	63,495,000	65,344,000
PHS Coverage (%)	53.2	50.7	49.1	50.7	51.2
EPI Coverage (%)*	59.3	42.7	38.4	41.9	41.9
Health Service Utilization	NA	NA	0.27	0.27	0.27
CPR (%)**	9.8	6.0	7.9	13.3	18.7
Antenatal Coverage (%)	30.4	25.7	25.5	29.1	34.7
Number of Facilities					
Hospitals	87	96	100	103	110
Health Centers	257	282	304	356	382
Health Stations	2451	2331	2268	2330	2293
Health Posts	NA	802	1012	833	1023
Private Clinics	541	712	966	1119	1170
Pharmacies	197	292	272	304	311
Drug Shops	148	222	243	250	249
Rural Drug Vendors	1460	1659	1858	1950	1917
Human Resources (at service)***					
Physicians	1483	1415	1283	1263	1366
Health Officers	30	75	144	201	296
Nurses	4114	4774	5498	6713	7723
Health Assistants	10625	12521	10641	8330	7386
Para Medicals	1788	1772	1989	2201	2758
Human Resources (Graduate)					
Physicians		140	136	152	128
Health Officers		83	79	157	181
Nurses		1129	1416	1399	2164
Gov't Health Budget (% Gov't Total Budget)					
Total	6.0	5.6	5.3	4.8	7.3
Capital	5.9	6.6	4.9	7.9	13.6
Recurrent	6.0	5.5	5.6	3.5	4.0
Gov't Health Expenditure Per Capita (ETB)	9.9	11.3	17.9	8.3	11.5

* Coverage is calculated using DPT3 only.

** Services outside the government health institutions included only for Hareri & Addis Ababa

*** Only active manpower in government health facilities

Fig.1 Basic Health Service Indicators

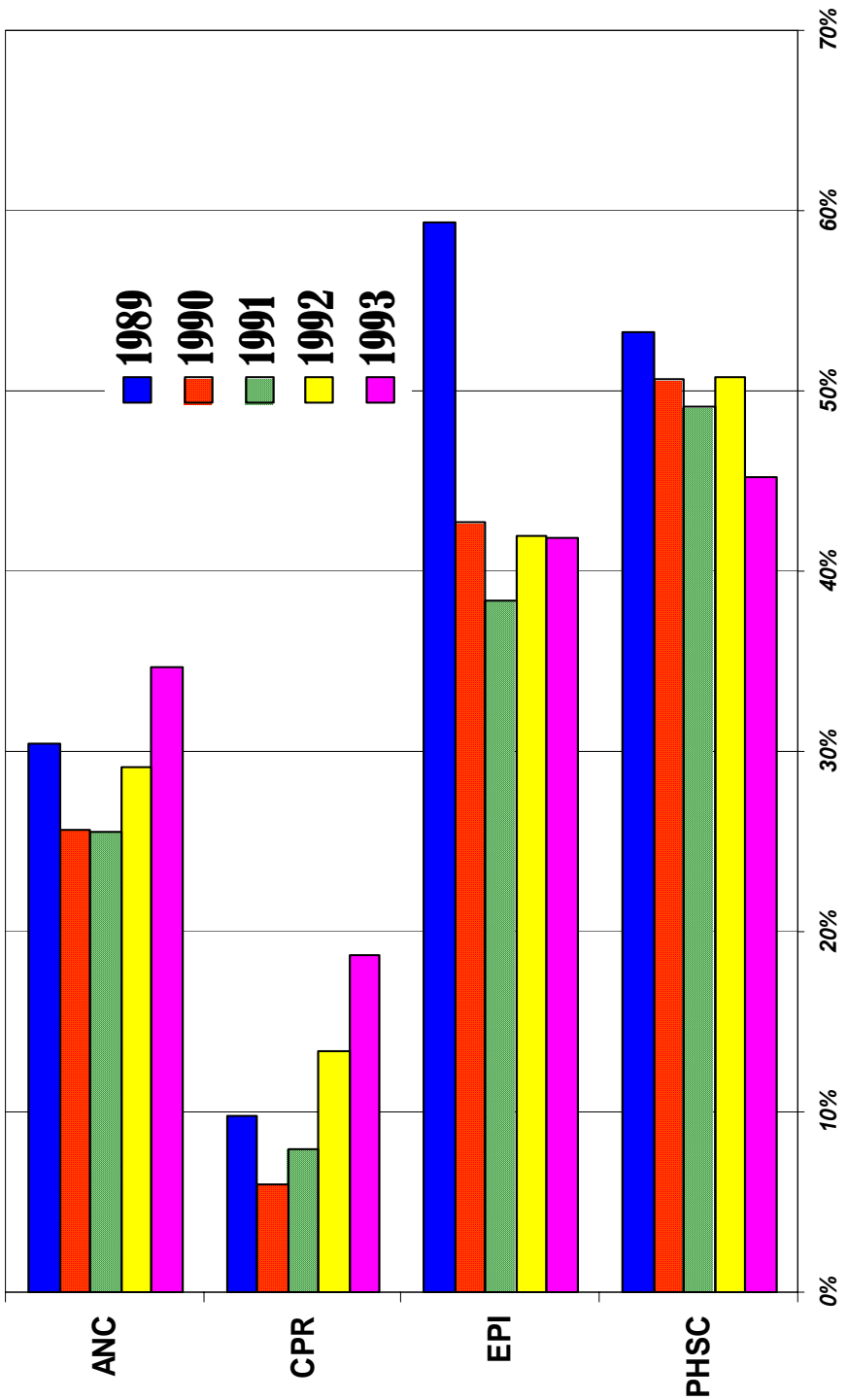
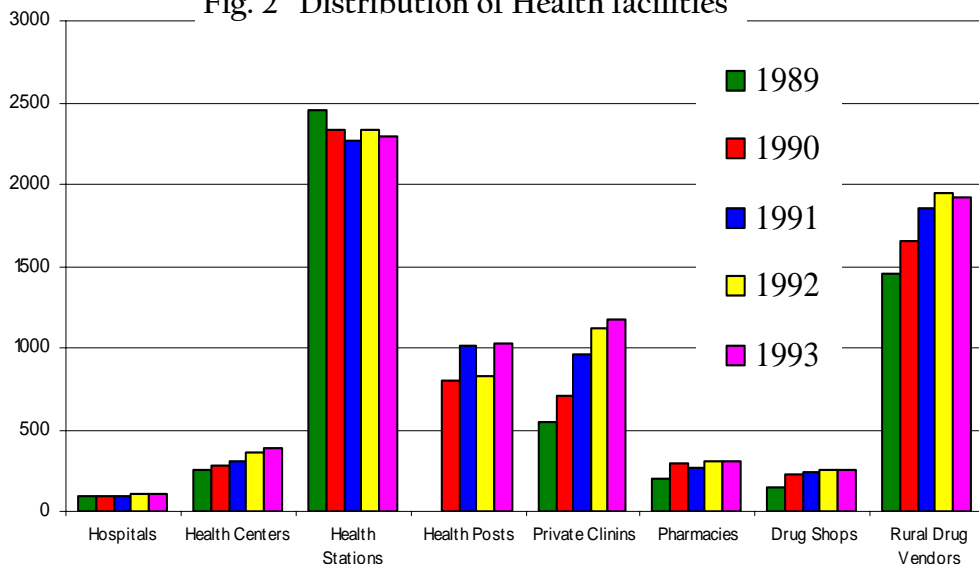


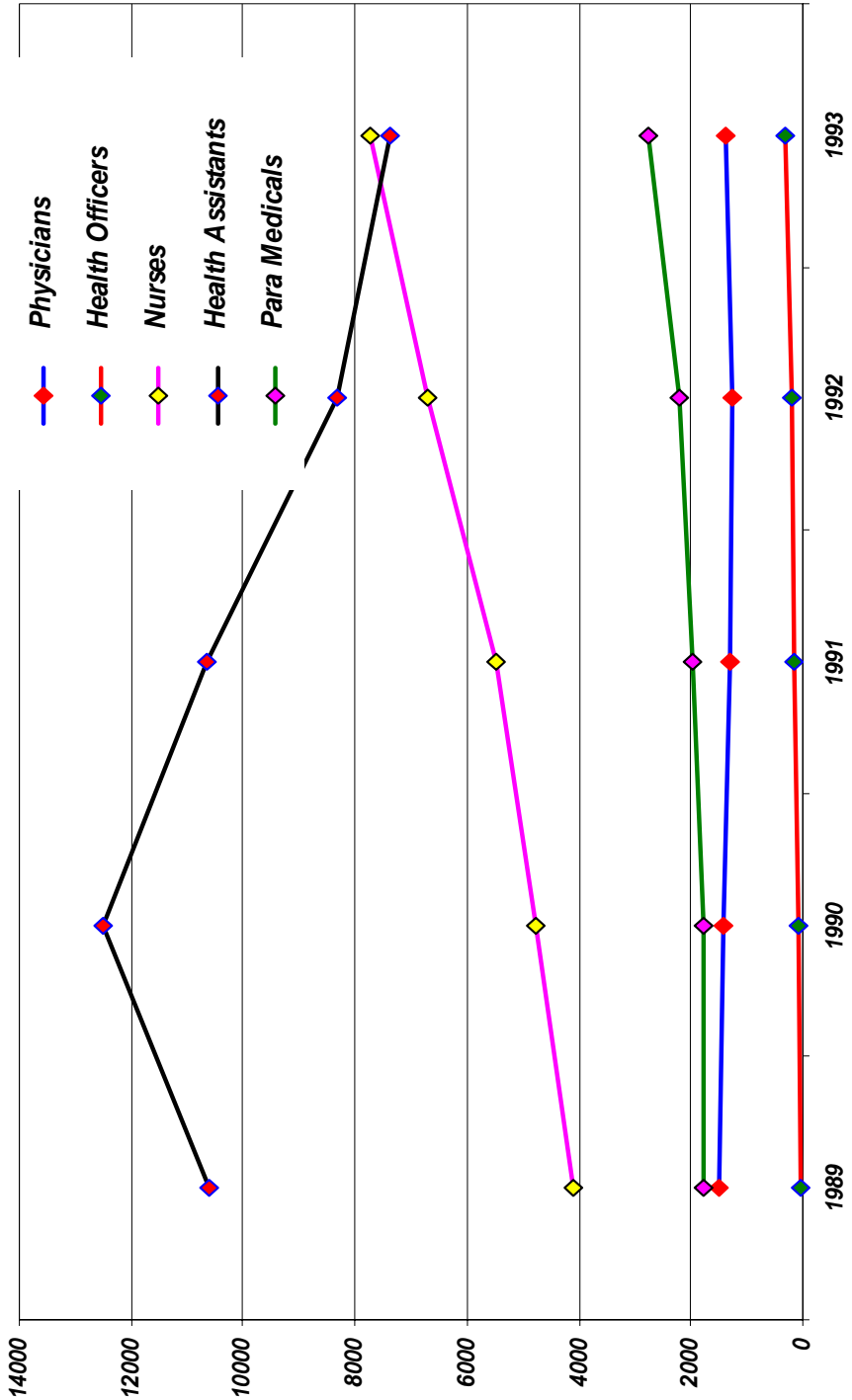
Fig. 2 Distribution of Health facilities



2. MAJOR HEALTH SECTOR DEVELOPMENT TARGETS

Indicators	1989	1994	2010
IMR /1000 live Births	110-128	90-95	50
MMR /100,000 live Births	560-850	450-500	300
Life Expectancy at Birth (Years)	52	55-60	64
EPI Coverage (%)	59.3	70-80	90
Contraceptive Coverage (%)	9.8	15-20	40
Health Service Coverage (%)	53.23	50	100
Population Growth Rate (%)	2.9	2.5-2.7	2.0
Health Facility Construction			
PHCU		216	864
District Hospital		12	48
Zone Hospital		5	20
		2	8
Health Facility Renovation			
PHCU		159	600
District Hospital		50	100
Zone Hospital		10	20

Fig. 3 Availability of Health Personnel by Selected Professional Categories



3. DEMOGRAPHY & VITAL STATISTICS

3.1 SOME DEMOGRAPHIC INDICATORS, 1993

Region	Population								Dependency Ratio %	Pop. Density Per Km ²	Average HH Size*
	Both Sexes	Sex Ratio	Urban %	Under One %	Under Three %	Under Five %	Female 15-49 %				
Tigray	3,797,000	96.8	17.2	4.0	7.7	17.7	23.2	92.3	75.8	4.3	
Afar	1,243,000	127.2	8.3	3.3	6.4	15.0	22.4	72.6	NA	5.7	
Amhara	16,748,000	100.1	10.5	3.9	7.6	17.5	23.2	88.8	105.2	4.5	
Oromia	23,023,000	99.7	12.1	4.2	8.0	18.4	23.1	92.7	65.2	4.8	
Somali	3,797,000	117.6	15.4	3.3	6.5	15.4	22.7	71.2	NA	6.6	
Ben.-Gumz	551,000	101.8	9.1	3.8	7.4	17.1	24.0	161.9	11.2	4.5	
SNNPR	12,903,000	98.8	7.8	4.3	8.3	18.8	23.8	91.1	114.9	4.7	
Gambella	216,000	103.8	17.1	3.5	6.7	15.3	27.1	68.0	8.4	4.5	
Hareri	166,000	102.4	60.8	3.8	7.1	15.2	27.0	63.1	533.3	4.3	
Addis Ababa	2,570,000	92.8	100.0	2.6	4.7	9.4	34.0	40.8	4847.8	5.1	
Dire Dawa	330,000	101.2	72.4	4.1	7.6	16.0	27.6	64.9	272.0	4.7	
National	65,344,000	100.6	15.1	4.0	7.7	17.6	23.7	87.2	52.2	4.8	

Source: The 1994 G.C. Population and Housing Census of Ethiopia, Analytic Report (CSA)

* Average House Hold Size was indicated for the year 1994 G.C.

3.2 VITAL STATISTICS, 1993-1998 (2000-05 G.C.)

Region	CBR per 1000	CDR per 1000	RNI (%)	TFR (Child per Woman)	IMR per 1000	Under 5 MR per 1000	Male LE	Female LE
Tigray	40.4	13.7	2.7	6.0	102.0	148.0	52.0	54.9
Afar	33.8	11.6	2.2	5.6	99.0	145.0	56.9	50.8
Amhara	39.5	12.8	2.7	5.8	96.0	138.0	53.4	56.0
Oromia	41.6	12.9	2.9	6.2	98.0	142.0	53.0	55.5
Somali	36.1	9.8	2.6	5.8	83.0	119.0	58.7	55.4
B/Gum	40.0	14.6	2.5	5.6	117.0	173.0	50.1	51.1
SNNPR	42.6	13.4	2.9	6.1	107.0	157.0	51.4	53.5
Gambella	34.8	9.1	2.6	4.4	80.0	113.0	57.6	58.3
Hareri	35.6	12.0	2.4	4.4	93.0	135.0	55.6	54.7
Addis Ababa	22.7	7.6	1.5	2.2	61.0	83.0	60.3	64.1
Dire Dawa	37.0	11.7	2.5	4.5	94.0	136.0	54.1	55.8
National	39.9	12.6	2.7	5.8	96.8	140.1	53.4	55.4

Source: The 1994 Population and Housing Census of Ethiopia, Analytic Report (CSA)

3.3 DEMOGRAPHIC DATA & ESTIMATES FOR SOME COUNTRIES & REGIONS OF THE WORLD

	Population (*Millions)	CBR	CDR	RNI (%)	Projected Population (*Millions)		IMR	TFR	% of Population of Age			LE at Birth (Years)			% of Pop. 15-49 With HIV/AIDS End-1999	GNI PPP Per Capita, 1999G.C. (US\$)
					2025	2050			<15	65+	BS	M	F			
World	6,137.0	22.0	9.0	1.3	7,818.0	9,036.0	56.0	2.8	30.0	7.0	67.0	65.0	69.0	1.1	6,650.0	
More Developed	1,193.0	11.0	10.0	0.1	1,248.0	1,242.0	8.0	1.6	18.0	14.0	75.0	72.0	79.0	0.3	20,520.0	
Less Developed	4,944.0	25.0	8.0	1.6	6,570.0	7,794.0	61.0	3.2	33.0	5.0	64.0	63.0	66.0	1.4	3,300.0	
Less Developed (Excl. China)	3,671.0	28.0	9.0	1.9	5,139.0	6,425.0	67.0	3.6	36.0	4.0	62.0	61.0	64.0	1.9	3,210.0	
Africa	818.0	38.0	14.0	2.4	1,268.0	1,800.0	88.0	5.2	43.0	3.0	54.0	52.0	55.0	6.7	1,790.0	
Sub-Saharan Africa	673.0	41.0	15.0	2.5	1,067.0	1,560.0	94.0	5.6	44.0	3.0	51.0	49.0	52.0	8.6	1,370.0	
Northern Africa	177.0	28.0	7.0	2.2	251.0	304.0	53.0	3.6	37.0	4.0	66.0	64.0	67.0	0.2	3,070.0	
Western Africa	240.0	42.0	15.0	2.7	393.0	581.0	88.0	5.8	45.0	3.0	51.0	50.0	52.0	4.6	1,000.0	
Eastern Africa	252.0	42.0	16.0	2.5	398.0	574.0	97.0	5.7	45.0	3.0	50.0	49.0	51.0	11.0	850.0	
Burundi	6.2	42.0	17.0	2.5	10.5	16.1	75.0	6.5	48.0	3.0	47.0	46.0	47.0	11.3	570.0	
Comoros	0.6	47.0	12.0	3.5	1.1	1.8	91.0	6.8	46.0	5.0	56.0	54.0	59.0	0.1	1,430.0	
Djibouti	0.6	43.0	16.0	2.7	0.8	1.1	117.0	6.1	43.0	3.0	46.0	44.0	48.0	11.8	-	
Eritrea	4.3	43.0	13.0	3.0	8.3	13.3	80.0	6.0	43.0	3.0	55.0	53.0	57.0	2.9	1,040.0	
Ethiopia	65.4	40.0	13.0	2.9	117.6	172.7	97.0	5.9	44.0	3.0	54.0	53.0	55.0	10.6	620.0	
Kenya	29.8	34.0	14.0	2.0	33.3	37.4	74.0	4.4	44.0	3.0	48.0	48.0	49.0	14.0	1,010.0	
Madagascar	16.4	43.0	13.0	3.0	30.8	47.0	96.0	5.8	45.0	3.0	54.0	52.0	56.0	0.2	790.0	
Malawi	10.5	46.0	23.0	2.3	17.1	22.2	104.0	6.4	47.0	3.0	39.0	39.0	40.0	16.0	570.0	
Mauritius	1.2	17.0	7.0	1.0	1.4	1.5	15.6	2.0	26.0	6.0	71.0	67.0	74.0	0.1	8,950.0	
Mayotte	0.2	41.0	10.0	3.1	0.4	0.6	75.0	5.6	47.0	2.0	59.0	57.0	61.0	-	-	
Mozambique	19.4	43.0	22.0	2.1	21.6	22.9	135.0	5.6	44.0	3.0	72.0	69.0	76.0	13.2	810.0	
Reunion	0.7	20.0	5.0	1.5	0.9	1.0	8.0	2.3	27.0	7.0	75.0	70.0	79.0	-	-	
Rwanda	7.3	39.0	21.0	1.8	8.0	8.9	107.0	5.8	44.0	3.0	39.0	39.0	40.0	11.2	880.0	
Seychelles	0.1	18.0	7.0	1.1	0.1	0.1	10.0	2.0	29.0	8.0	70.0	45.0	73.0	-	-	

Cont. ...

Cont.

	Population (Millions)	CBR	CDR	RNI (%)	Projected Population (*Millions)		IMR	TFR	% of Population of Age				LE at Birth (Years)			% of Pop. 15-49 With HIV/AIDS End-1999	GNI PPP Per Capita, 1999G.C. (US\$)
					2025	2050			<15	65+	BS	M	F				
Somalia	7.5	48.0	19.0	3.0	14.9	25.5	126.0	7.3	44.0	3.0	46.0	52.0	48.0	-	-	-	
Tanzania	36.2	41.0	13.0	2.8	59.8	88.3	99.0	5.6	45.0	3.0	53.0	42.0	54.0	8.1	500.0	-	
Uganda	24.0	48.0	19.0	2.9	48.0	84.1	97.0	6.9	51.0	2.0	42.0	37.0	43.0	8.3	1,160.0	-	
Zambia	9.8	45.0	22.0	2.3	14.3	20.3	95.0	6.1	45.0	2.0	37.0	41.0	38.0	20.0	720.0	-	
Zimbabwe	11.4	29.0	20.0	0.9	9.5	9.3	65.0	4.0	44.0	2.0	40.0	46.0	39.0	25.1	2,690.0	-	
Middle Africa	99.0	46.0	16.0	2.9	183.0	300.0	113.0	6.6	47.0	2.0	48.0	51.0	50.0	5.4	-	-	
Southern Africa	50.0	27.0	14.0	1.3	42.0	41.0	61.0	3.1	35.0	5.0	52.0	53.0	53.0	20.7	8,160.0	-	
North America	316.0	14.0	9.0	0.5	382.0	450.0	7.0	2.0	21.0	13.0	77.0	74.0	80.0	0.6	31,260.0	-	
Latin America & the Caribbean	525.0	24.0	6.0	1.7	697.0	815.0	31.0	2.8	32.0	5.0	71.0	68.0	74.0	0.6	6,460.0	-	
Central America	138.0	26.0	5.0	2.1	190.0	228.0	30.0	3.1	36.0	5.0	73.0	71.0	76.0	0.5	6,900.0	-	
Caribbean	37.0	21.0	8.0	1.3	46.0	50.0	42.0	2.6	30.0	7.0	68.0	66.0	71.0	2.1	-	-	
South America	350.0	23.0	7.0	1.6	462.0	537.0	31.0	2.6	31.0	6.0	70.0	67.0	73.0	0.5	6,730.0	-	
Oceania	3.1	18.0	7.0	1.1	40.0	46.0	28.0	2.5	25.0	10.0	74.0	72.0	76.0	0.1	17,880.0	-	
Asia	3,720.0	22.0	8.0	1.4	4,714.0	5,262.0	55.0	2.7	30.0	6.0	67.0	65.0	68.0	0.3	3,930.0	-	
Western Asia	193.0	28.0	7.0	2.1	299.0	400.0	45.0	3.9	36.0	5.0	68.0	66.0	69.0	Z	4,810.0	-	
South Central Asia	1,505.0	27.0	9.0	1.8	2,061.0	2,503.0	72.0	3.4	37.0	4.0	61.0	60.0	62.0	0.5	2,250.0	-	
Southeast Asia	519.0	23.0	7.0	1.6	685.0	775.0	44.0	2.8	32.0	5.0	66.0	64.0	69.0	0.6	3,210.0	-	
East Asia	1,503.0	15.0	7.0	0.8	1,669.0	1,584.0	30.0	1.8	22.0	8.0	72.0	70.0	74.0	0.1	5,750.0	-	
Europe	727.0	10.0	11.0	0.1	717.0	662.0	9.0	1.4	18.0	15.0	74.0	70.0	78.0	0.3	14,970.0	-	
Northern Europe	96.0	11.0	10.0	0.1	102.0	101.0	5.0	1.6	19.0	15.0	77.0	74.0	80.0	0.1	21,460.0	-	
Western Europe	184.0	11.0	10.0	0.1	189.0	180.0	5.0	1.6	17.0	16.0	78.0	75.0	81.0	0.2	23,840.0	-	
Eastern Europe	303.0	9.0	14.0	(0.5)	287.0	259.0	14.0	1.2	18.0	13.0	68.0	63.0	74.0	0.3	6,770.0	-	
Southern Europe	145.0	10.0	10.0	-	139.0	122.0	7.0	1.3	16.0	16.0	77.0	74.0	80.0	0.4	16,520.0	-	

Source: 2001 World Population Data Sheet of the Population Reference Bureau (PRB) Book Edition, May 2001 G.C.

4. EDUCATION & ECONOMIC STATISTICS

4.1 SCHOOL AGE POPULATION, ENROLLEMENT AND GROSS ENROLLEMENT RATIOS BY REGION AND SEX , 1993

A. Primary (Grade 1-8)

Region	School Age Population (7-14)		Enrollment		Gross Enrollment Ratio	
	Both Sexes	Female	Both Sexes	Female	Both Sexes	Female
Tigray	761,235	374,460	562,635	268,923	73.9	71.8
Afar	242,601	103,216	27,832	10,124	11.5	9.8
Amhara	3,290,392	1,630,061	1,754,802	809,790	53.3	49.7
Oromiya	4,628,137	2,292,253	2,680,868	965,006	57.9	42.1
Somali	807,841	363,462	85,840	26,236	10.6	7.2
Benishangul	112,157	54,856	99,314	34,734	88.5	63.3
SNNP	2,566,205	1,273,280	1,638,501	594,029	63.8	46.7
Gambella	39,948	19,342	38,256	14,124	95.8	73.0
Hareri	25,994	12,680	27,379	11,295	105.3	89.1
Addis Ababa	377,406	197,205	446,342	233,632	118.3	118.5
Dire Dawa	52,463	25,930	39,704	17,391	75.7	67.1
National	12,904,379	6,346,745	7,401,473	2,985,284	57.4	47.0

B. Secondary

Region	School Age Population (15-18)		Enrollment		Gross Enrollment Ratio	
	Both Sexes	Female	Both Sexes	Female	Both Sexes	Female
Tigray	324,396	161,124	74,703	28,195	23.0	17.5
Afar	116,150	47,147	3,865	1,499	3.3	3.2
Amhara	1,408,088	694,765	133,224	61,189	9.5	8.8
Oromiya	1,994,757	983,721	216,087	81,659	10.8	8.3
Somali	377,803	163,022	2,516	719	0.7	0.4
Benishangul	47,563	23,493	4,792	1,481	10.1	6.3
SNNP	1,106,450	547,641	106,849	34,474	9.7	6.3
Gambella	19,600	9,629	3,503	760	17.9	7.9
Hareri	15,069	7,624	7,570	3,476	50.2	45.6
Addis Ababa	285,953	159,202	173,533	87,766	60.7	55.1
Dire Dawa	29,798	15,785	9,532	4,274	32.0	27.1
National	5,725,627	2,813,153	736,174	305,492	12.9	10.9

Source: Education Statistics Annual Abstract 1993, August 2001 G.C. (MOE)

4.2 SOCIO-ECONOMIC DATA, 1984-1993

‘Million ETB.

Sr. No.	ECONOMIC INDICATORS	1985 1992/93	1986 1993/94	1987 1994/95	1988 1995/96	1989 1996/97	1990 1997/98	1991 1998/99	1992 1999/2000	1993 2000/01
1	Gross Domestic Expenditure	28,969.4	31,196.4	36,936.9	41,689.4	44,406.6	49,649.7	56,839.8	62,168.1	60,408.5
2	Consumption Expenditure	25,177.3	26,902.7	31,367.9	35,285.0	37,357.5	41,723.6	47,992.7	54,458.0	51,727.7
		• Government	2,818.8	3,155.2	4,021.2	4,239.7	4,526.3	6,251.4	7,315.4	12,365.7
	• Private	22,358.5	23,747.5	27,346.7	31,045.3	32,831.2	35,472.2	40,677.3	42,092.3	41968.0
3	Gross Domestic Savings	1,494.1	1,426.2	2,517.1	2,652.6	4,107.6	3,311.3	1,157.6	(487.7)	1144.0
4	Gross Capital Formation	3,792.1	4,293.7	5,569.0	6,404.4	7,049.1	7,926.1	8,847.1	7,710.1	8680.9
5	GDP at Current Market	26,671.4	28,328.9	33,885.0	37,937.6	41,465.1	45,034.9	49,150.3	53,970.3	52871.7
6	GDP Annual Growth Rate (%)	12.0	1.7	5.4	10.6	5.2	(0.5)	6.3	5.2	8.7
		• From Health	14.7	19.3	7.1	5.1	4.0	9.9	6.1	(0.6)

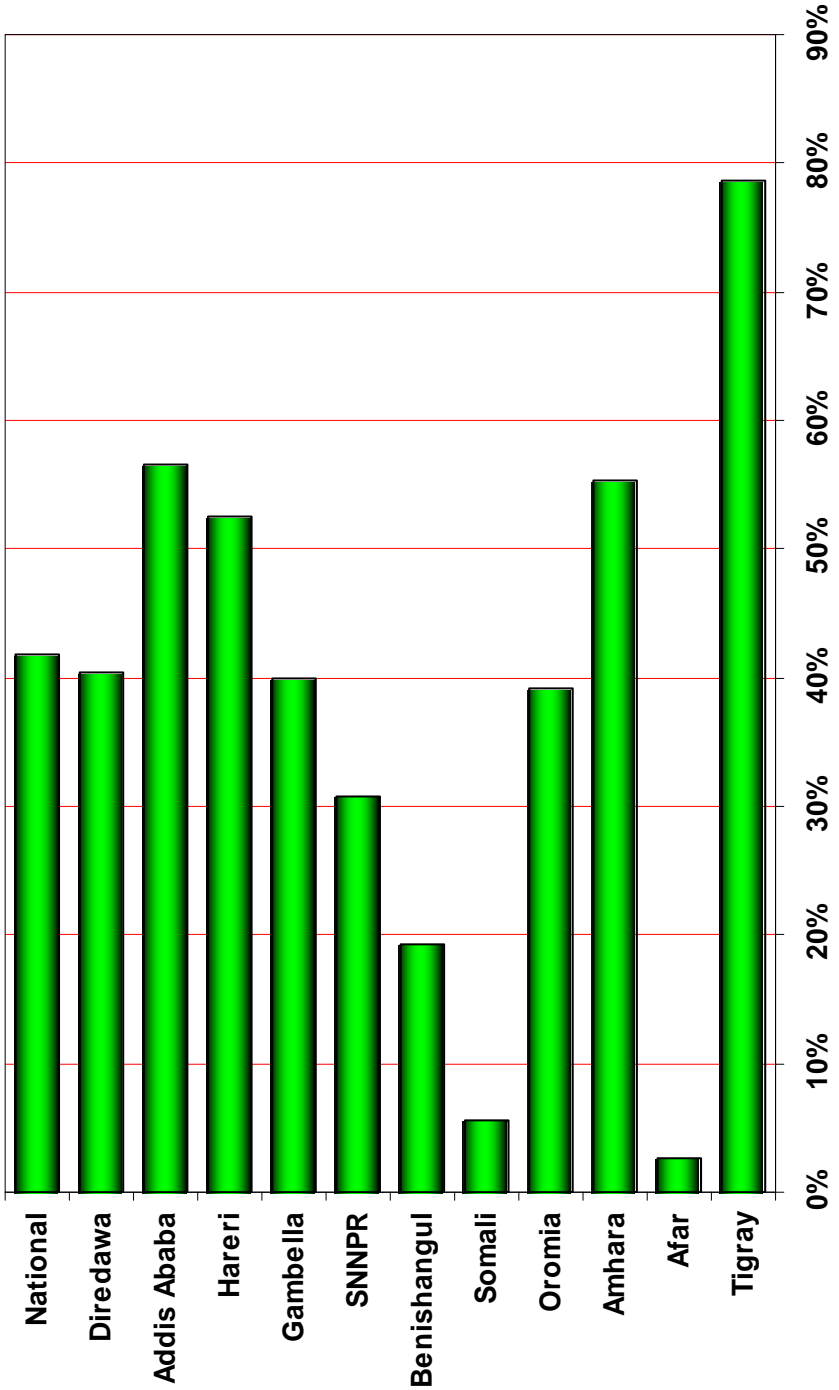
Source: Ministry of Economic Development and Cooperation

5. MATERNAL & CHILD HEALTH SERVICES

5.1 IMMUNIZATION COVERAGE BY ANTIGEN, 1993

Region	Target Population	BCG		DPT ₃		Measles		Fully Immunized	
		Achieved	Coverage	Achieved	Coverage	Achieved	Coverage	Achieved	Coverage
Tigray	150,696	129,628	86.0	118554.0	78.7	107416.0	71.3	87357.0	58.0
Afar	41,528	1,871	4.5	1081.0	2.6	1731.0	4.2	722.0	1.7
Amhara	657,664	480,021	73.0	363989.0	55.4	338305.0	51.4	176907.0	26.9
Oromia	960,574	524,467	54.6	375944.0	39.1	303562.0	31.6	245886.0	25.6
Somali	126,241	10,922	8.7	7047.0	5.6	6946.0	5.5	NA	NA
Ben-Gum.	21,119	6,567	31.1	4082.0	19.3	4069.0	19.3	2011.0	9.5
SNNPR	559,863	253,471	45.3	172518.0	30.8	147521.0	26.4	NA	NA
Gambella	7,605	3,975	52.3	3034.0	39.9	2471.0	32.5	NA	NA
Hareri	6,354	5,023	79.1	3334.0	52.5	2541.0	40.0	2447.0	38.5
Addis Ababa	67,241	39,529	58.8	38001.0	56.5	33511.0	49.8	33469.0	49.8
Dire dawa	13,412	7,296	54.4	5421.0	40.4	4310.0	32.1	NA	NA
National	2,598,885	1,455,474	56.0	1087584.0	41.9	948073.0	36.5	548799.0	21.1

Fig. 4 Immunization Coverage (DPT3) by Regions, 1993



5.2 DROP-OUT RATES OF ROUTINE EPI ACTIVITY, 1993

Regions	BCG-Measles	Rate	BCG-DPT3	Rate	DPT1-DPT3	Rate	DPT1-Measles	Rate
Tigray	22212.0	17.1	11074.0	8.5	6248.0	5.0	17386.0	13.9
Afar	140.0	7.5	790.0	42.2	816.0	43.0	166.0	8.8
Amhara	141716.0	29.5	116032.0	24.2	32822.0	8.3	58506.0	14.7
Oromia	220905.0	42.1	148523.0	28.3	139209.0	27.0	211591.0	41.1
Somali	3976.0	36.4	3875.0	35.5	4671.0	39.9	4772.0	40.7
Benishangul	2498.0	38.0	2485.0	37.8	1722.0	29.7	1735.0	29.9
SNNPR	105950.0	41.8	80953.0	31.9	NA	-	NA	-
Gambella	1504.0	37.8	941.0	23.7	NA	-	NA	-
Hareri	2482.0	49.4	1689.0	33.6	1118.0	25.1	1911.0	42.9
Addis Ababa	6018.0	15.2	1528.0	3.9	NA	-	NA	-
Diredawa	2986.0	40.9	1875.0	25.7	NA	-	NA	-
National	510387.0	34.9	369765.0	25.3	NA	-	NA	-

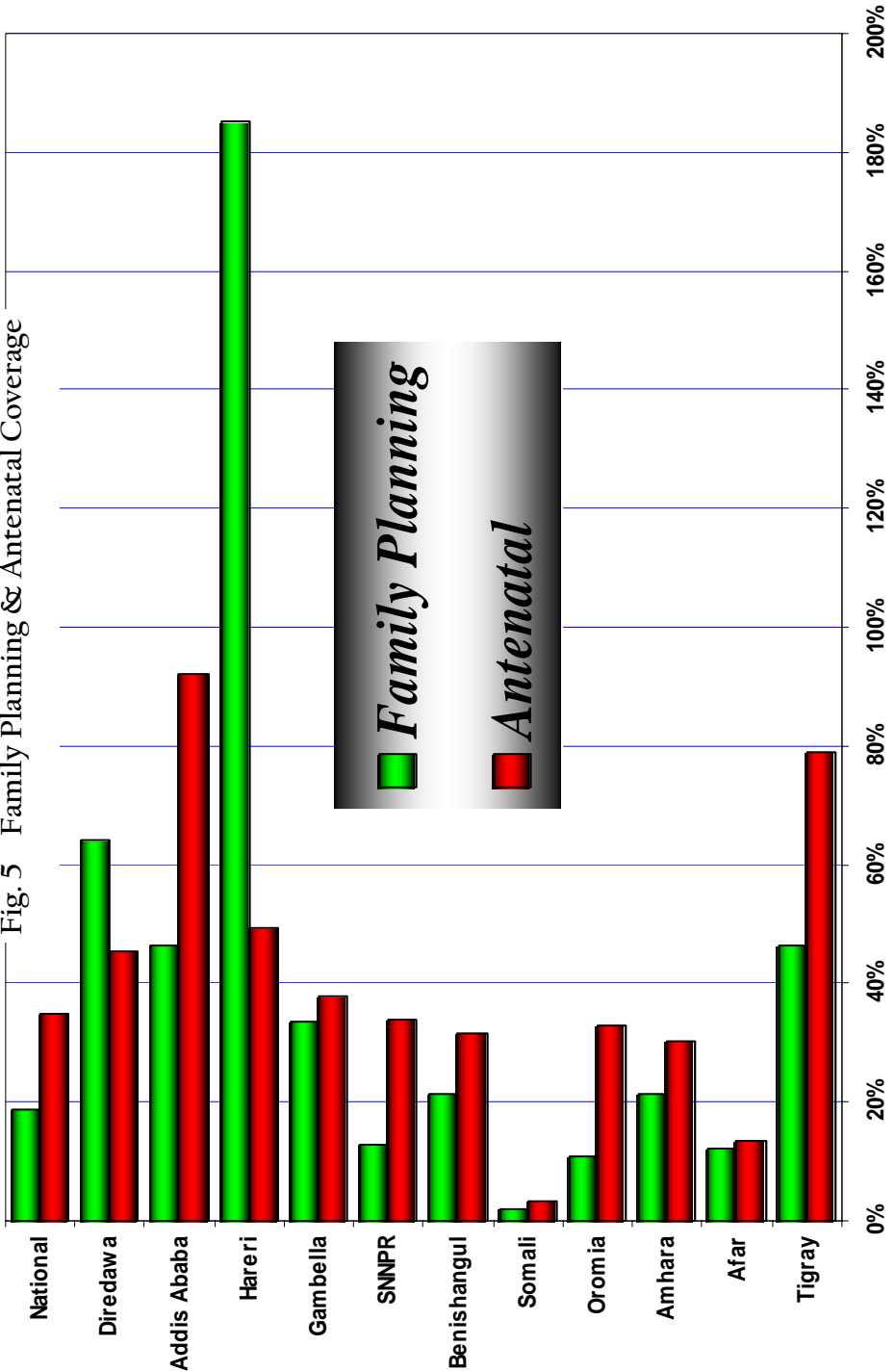
5.3 TT2+ ACHIEVEMENT & COVERAGE BY REGION, 1993

Region	TT2+ Achievement & Coverage						
	Pregnant Women			Non-Pregnant Women			
	Target Population	Achieved	Coverage	Target Population	Achieved	Coverage	
Tigray	153399	51865	33.8	727537.0	332092.0	45.7	
Afar	42013	879	2.1	236019.0	787.0	0.3	
Amhara	661546	238713	36.1	3222573.0	900635.0	28.0	
Oromia	957757	282366	29.5	4357594.0	471325.0	10.8	
Somali	137072	3920	2.9	724446.0	4564.0	0.6	
Ben-Gum.	22040	1446	6.6	110027.0	2674.0	2.4	
SNNPR	549668	141221	25.7	2517551.0	171125.0	6.8	
Gambella	7517	1871	24.9	50932.0	4508.0	8.9	
Hareri	5910	2622	44.4	38873.0	3461.0	8.9	
Addis Ababa	58339	33049	56.7	816528.0	NA	NA	
Dire Dawa	12210	6445	52.8	78746.0	9304.0	11.8	
National	2607470	764397	29.3	12880825.0	1900475.0	14.8	

5.4 MATERNAL HEALTH SERVICES ACHIEVEMENT & COVERAGE BY REGION, 1993

Region	Expected Delivery/ Pregnancy	Antenatal		Attended Delivery		Postnatal Services		Non-Pregnant Women	Family Planning		
		Achieved	Coverage	Achieved	Coverage	Achieved	Coverage		New Acceptors	Continual Acceptors	Coverage
Tigray	153,399	121215	79.0	62954	41.0	58170	37.9	727,537	198941	139340	46.5
Afar	42,013	5602	13.3	1494	3.6	241	0.6	236,019	14278	14123	12.0
Amhara	661,546	199156	30.1	52134	7.9	40411	6.1	3,222,573	689290	NA	21.4
Oromia	957,757	315915	33.0	60764	6.3	52664	5.5	4,357,594	325642	142979	10.8
Somali	137,072	4323	3.2	2723	2.0	268	0.2	724,446	8003	6614	2.0
B/Gum	22,040	6987	31.7	3133	14.2	490	2.2	110,027	11066	12428	21.4
SNNPR	549,668	186936	34.0	49052	9.0	14999	2.7	2,517,551	323641	NA	12.9
Gambella	7,517	2851	38.0	965	12.8	360	4.8	50,932	4971	12110	33.6
Hareri	5,910	2923	49.5	1273	21.6	660	11.2	38,873	50089	21914	185.2
Addis Ababa	58,339	53824	92.3	21840	37.4	8333	14.3	816,528	92804	285596	46.3
Dire Dawa	12,210	5551	45.5	2751	22.5	NA	-	78,746	50446	NA	64.1
National	2,607,470	905283	34.7	259083	10.0	176596	6.8	12,880,825	1769171	635105	18.7

Fig. 5 Family Planning & Antenatal Coverage



5.5 AMOUNT OF CONTRACEPTIVE DISTRIBUTED TO THE REGIONS BY TYPE OF CONTRACEPTIVE METHOD, 1993

Regions	Microgynon (Cycle)	Megestron (Vial)	Lo- Femnal (Cycle)	Excluton (Cycle)	Male Condoms (Each)	Female Condoms (Each)	Depo Provera (Vial)	Conceptrol Foaming (Pack)	Copper T (Pack)	Norplant (Pack)
Tigray	211,200	50,000	188,400	24,000	270,000	4,520	20,400	-	32	700
Afar	-	-	-	-	-	-	-	-	-	-
Amhara	380,160	-	136,800	114,000	643,200	3,840	56,800	-	72	500
Oromia	374,880	730,800	774,000	300,000	720,000	3,797	68,000	-	80	500
Somali	13,200	-	-	116,400	-	-	-	-	-	-
Benishangul	-	-	37,200	-	60,000	-	9,600	-	8	-
SNNPR	316,800	-	288,000	-	576,000	-	42,800	-	64	500
Gambella	10,560	7,000	-	27,600	-	-	-	-	-	-
Hareri	39,600	-	56,400	24,000	84,000	360	19,000	-	8	-
Dire Dawa	36,960	-	8,000	21,600	-	1,760	-	-	-	-
Addis Ababa	-	131,600	-	-	28,800	1,860	68,000	-	-	1,150
Others*	403,920	-	4,464,000	-	9,234,000	1,000	638,400	1,920	712	1,840
National	1,787,280	919,400	5,952,800	627,600	11,616,000	17,137	923,000	1,920	976	5,190

* Distributed to Ministry of Defense, Oromia Development Association (ODA), Marry Stopes International-Ethiopia (MSI-E), Abebech Goberna Orphanage School (AGOS), Ethiopian Aid, African Humanitarian Action (AHA), Family Guidance Association of Ethiopia (FGAE), REST (Relief Society of Tigray)

5.6 PERCENTAGE OF CONTRACEPTIVE USERS BY TYPE OF CONTRACEPTIVE METHOD, 1992 –1993

Region	Pills		Depo Provera		Norplant		IUD		Condoms		Others	
	1992	1993	1992	1993	1992	1993	1992	1993	1992	1993	1992	1993
Tigray	56.7	53.3	27.0	30.0	0.2	0.1	0.1	0.1	14.7	16.5	1.4	0.0
Afar	31.2	25.3	22.9	48.8	0.0	0.0	0.0	0.0	45.9	26.0	0.0	0.0
Amhara	NA	NA	NA	NA	NA	NA	NA	NA	NA	NA	NA	NA
Oromia	58.6	62.3	30.2	26.2	0.2	0.1	0.3	0.2	10.6	11.2	0.1	0.1
Somali	34.5	28.3	8.2	11.4	0.0	0.0	0.1	0.0	27.6	60.3	29.7	0.0
B/Gum	56.6	44.3	40.6	41.9	0.0	0.0	0.0	0.0	2.8	13.8	0.0	0.0
SNNPR	64.3	0.0	26.3	0.0	0.1	0.0	0.4	0.0	8.6	0.0	0.3	0.0
Gambella	41.7	40.0	28.6	30.1	0.0	0.0	0.0	0.0	29.8	30.0	0.0	0.0
Hareri	70.0	35.0	25.5	30.3	0.0	7.1	0.3	0.1	4.3	27.6	0.0	0.0
Addis Ababa	50.9	56.7	37.9	34.6	0.2	0.2	1.0	0.4	10.0	7.3	0.0	0.9
Dire Dawa	51.0	NA	28.7	NA	0.6	NA	0.9	NA	18.9	NA	0.0	NA
National	59.4	30.8	26.4	17.0	0.1	0.3	0.4	0.1	12.7	7.5	1.1	0.2

6. HEALTH INFRASTRUCTURE

6.1 POTENTIAL HEALTH SERVICE COVERAGE AND VISIT PER CAPITA, 1993

Region	Population	Health Center	Health Station	Health Post	* Potential Health Service Coverage (%)	Out Patient	
						Total Visit	Visit per Capita
Tigray	3,797,000	29	179	103	66.24	3021201	0.80
Afar	1,243,000	5	53	36	52.70	289365	0.23
Amhara	16,748,000	77	536	361	43.50	2,539,317	0.15
Oromia	23,023,000	114	795	145	46.91	651,5514	0.28
Somali	3,797,000	10	91	0	30.55	153,553	0.04
B/Gum	551,000	7	71	24	86.21	418,756	0.76
SNNPR	12,903,000	107	443	290	55.06	2,626,193	0.20
Gambella	216,000	5	38	0	87.96	173,020	0.80
Hareri	166,000	2	19	7	114.46	131,720	0.79
Addis Ababa	2,570,000	24	161	47	93.39	1,404,746	0.55
Dire Dawa	330,000	2	7	10	51.52	90,940	0.28
National	65,344,000	382	2,393	1,023	51.24	17,364,325	0.27

* Health Centers & Health Stations are included in the calculation which consider to serve with the capacity of 25,000 & 10,000 patients respectively, with exceptions for some regions which overlook regional consideration.

6.2 DISTRIBUTION OF HEALTH INFRASTRUCTURE, 1993

Region	Hospitals				Health Centers				Health Stations			Health Posts
	MOH	Others*	Total	Beds	MOH	Other**	Total	Beds	MOH	Other**	Total	
Tigray	12	1	13	1217	29	0	29	46	158	21	179	103
Afar	2	0	2	208	5	0	5	28	50	3	53	36
Amhara	14	2	16	1207	77	0	77	303	518	18	536	361
Oromia	20	8	28	1981	111	3	114	0	787	8	795	145
Somali	6	0	6	330	10	0	10	0	91	0	91	0
Ben.-Gumuz	2	0	2	171	7	0	7	254	65	6	71	24
SNNPR	10	2	12	963	103	4	107	0	299	144	443	290
Gambella	1	0	1	89	5	0	5	0	38	0	38	0
Hareri	3	2	5	328	2	0	2	10	8	11	19	7
Addis Ababa	5	***13	18	2126	20	4	24	136	8	153	161	47
Dire Dawa	1	1	2	245	2	0	2	8	6	1	7	10
Central**	4	1	5	1871	0	0	0	0	0	0	0	0
National	80	30	110	10736	371	11	382	785	2028	365	2393	1023

* Facilities owned by OGA & NGOs
 *** Includes 5 Central hospitals (St. Paulos, St. Peter, Amanuel, ALERT & Black Lion Hospitals)
 **** Includes Private Hospitals

6.3 DISTRIBUTION OF HOSPITALS BY TYPE AND OWNERSHIP, 1993

Region	MOH			OGA	NGO	Private	Total
	Specialized Hospital	Zonal Hospital	District Hospital				
Tigray	0	5	7	0	0	1	13
Afar	0	1	1	0	0	0	2
Amhara	0	6	8	2	0	0	16
Oromia	1	13	6	4	4	0	28
Somali	0	1	5	0	0	0	6
Benishangul	0	1	1	0	0	0	2
SNNPR	0	6	4	0	2	0	12
Gambella	0	0	1	0	0	0	1
Hareri	0	1	2	2	0	0	5
Addis Ababa	0	5	0	3	2	8	18
Dire Dawa	0	0	1	1	0	0	2
Central	4	0	0	1	0	0	5
National	5	39	36	13	8	9	110

6.4 DISTRIBUTION OF PRIVATE OWNED CLINICS BY TYPE AND REGION, 1993

Region	Types of Clinics				Total
	Lower	Medium	Higher	Special	
Tigray	0	1	1	0	2
Afar	2	0	0	0	2
Amhara	133	37	5	4	179
Oromia	NA	NA	NA	NA	435
Somali	0	0	0	0	0
Benishangul	2	0	0	0	2
SNNP	115	36	7	0	158
Gambella	21	4	0	0	25
Harari	10	4	0	0	14
Addis Ababa	114	94	66	66	340
Dire Dawa	5	7	1	0	13
National	402	183	80	70	1170

6.5 DISTRIBUTION OF PHARMACEUTICAL RETAIL OUTLETS BY REGION & OWNERSHIP, 1993

Region	Pharmacies				Drug Shops				Rural Drug Vendors		
	Public	NGO	Private	Total	Public	NGO	Private	Total	NGO	Private	Total
	Tigray	1	0	14	29	1	9	0	10	0	204
Afar	0	0	1	1	0	0	3	3	0	46	46
Amhara	6	5	29	40	1	0	39	40	0	243	243
Oromia	7	5	42	54	1	1	94	96	0	851	851
Somali	0	0	0	0	0	1	4	5	0	20	20
Benishangul	0	0	0	0	0	0	2	2	0	34	34
SNNPR	NA	NA	NA	27	NA	NA	NA	43	NA	480	480
Gambella	0	0	1	1	0	0	0	0	0	17	17
Hareri	0	1	6	7	0	0	3	3	0	4	4
Diredawa	1	1	13	15	1	0	3	4	0	10	10
Addis Ababa	11	1	125	137	1	0	42	43	0	8	8
National	NA	NA	NA	311	NA	NA	NA	249	NA	1917	1917

7. HUMAN RESOURCES

7.1 HEALTH HUMAN RESOURCE DISTRIBUTION BY REGION AND SEX, 1993

Profession	Tig	Afar	Amh	Orom	Som	Ben	SNNP	Gam	Har	A/A	DD	Cent	Total
Physicians	71	15	220	267	38	22	166	10	49	215	36	257	1366
Female	1	1	14	NA	0	0	13	0	4	60	3	41	
Health Officers	26	7	69	104	5	13	48	9	1	0	3	11	296
Female	3	3	7	NA	2	1	7	0	0	0	0	2	
Pharmacists	0	1	8	18	1	3	12	1	3	3	4	31	85
Female	0	0	1	NA	0	0	1	0	0	0	1	3	
Nurses	878	223	1436	1894	339	204	1175	158	149	585	109	573	7723
Female	532	103	564	NA	79	53	333	32	60	399	65	361	
Env. Health W.	41	13	237	304	31	31	169	16	10	36	13	19	920
Female	9	0	17	NA	2	2	13	1	1	2	1	4	
Lab. Tech.	124	20	172	290	38	28	212	9	33	67	14	43	1050
Female	44	1	22	NA	0	1	41	3	2	22	3	5	
Radiographer	13	3	27	48	8	6	24	1	7	24	4	25	190
Female	2	0	1	NA	0	0	0	0	1	2	0	5	
Pharm. Tech.	73	8	97	136	16	15	79	10	14	39	10	16	513
Female	26	0	25	NA	4	5	14	0	5	12	2	4	
Health Ass.	725	71	1729	2219	191	176	1299	68	80	461	72	295	7386
Female	381	13	507	NA	42	13	249	7	55	289	26	174	
*FLHW	2909	161	751	389	0	31	0	0	28	97	13	0	4379
Female	1481	39	341	NA	0	12	0	0	13	88	1	0	

*FLHW includes CHA, TBA, and PHW

7.2 DISTRIBUTION OF PHYSICIANS BY SPECIALIZATION AND REGION, 1993

Region	Tig	Afar	Amh	Orom	Som	Ben	SNNP	Gam	Har	A/A	DD	Cent	Total
Total	71	15	220	267	38	22	166	10	49	215	36	257	1362
Specialists													
Surgeons	4	0	14	8	2	0	5	1	2	14	2	15	67
Internists	3	0	4	2	1	0	1	0	1	12	1	34	59
Pediatricians	4	0	6	5	3	0	2	0	2	5	1	21	49
Ob.Gyn.	2	0	7	9	1	2	3	0	2	5	2	16	59
Ophthalmologists	2	0	3	3	1	0	0	0	1	8	1	7	26
ENT Specialists	0	0	0	0	0	0	0	0	0	5	0	3	8
Anesthesiologists	0	0	0	1	0	0	0	0	1	3	0	7	12
Dermatologists	0	0	0	2	0	0	0	0	0	1	0	7	10
Psychiatrists	0	0	0	0	0	0	0	0	0	0	0	7	7
Orthopedists	0	0	2	1	0	0	0	0	0	2	0	4	9
Neurologists	0	0	0	0	0	0	0	0	0	1	0	2	3
Dentists	0	0	3	1	1	0	0	0	0	2	0	1	8
Radiologists	2	0	1	2	1	0	0	0	1	6	1	8	22
Physiotherapists	0	0	0	0	0	0	0	0	0	0	0	8	8
MD + MPH	10	0	4	5	6	0	12	0	0	3	1	5	42
Gen. Practitioners	44	15	176	227	22	20	143	9	39	138	27	83	943
Physicians													

7.3 DISTRIBUTION OF NURSES BY SPECIALTY, REGION AND SEX, 1993

Region	Nurse B. Sc.		Mid-Wife Nurse		Psychiatry Nurse		Anaesthist Nurse		MCH Nurse		Dental Nurse		Clinical Nurse		Public Health N.		Other Nurses*		Total	
	BS	F	BS	F	BS	F	BS	F	BS	F	BS	F	BS	F	BS	F	BS	F	BS	F
	Tigray	6	0	142	124	3	1	12	2	0	0	4	3	612	312	12	5	87	85	878
Afar	0	0	29	16	0	0	0	0	1	0	0	0	165	84	26	2	2	1	223	103
Amhara	12	2	156	89	10	4	16	2	16	8	7	1	1075	406	144	52	0	0	1436	564
Oromia	16	NA	200	NA	11	NA	20	NA	11	NA	8	NA	1345	NA	279	NA	4	NA	1894	NA
Somali	1	0	25	24	0	0	3	0	0	0	0	0	280	51	22	3	8	1	339	79
Ben.-Gumz	0	0	24	16	2	0	2	0	0	0	1	0	146	35	29	2	0	0	204	53
SNNPR	3	0	147	68	10	2	14	4	7	1	4	0	878	234	92	18	20	6	1175	333
Gambella	2	0	18	6	2	1	1	1	0	0	2	1	114	19	17	2	2	2	158	32
Hareri	0	0	14	9	2	1	2	0	2	1	2	1	114	47	9	0	4	1	149	60
Addis Ababa	0	0	86	74	0	0	24	14	0	0	1	1	446	295	16	6	12	9	585	399
Dire Dawa	0	0	9	7	2	1	0	0	2	2	0	0	90	52	5	3	1	0	109	65
Central	2	1	23	23	37	12	16	8	8	7	1	1	349	223	0	0	137	86	573	361
National	42	3	873	456	79	22	110	31	47	19	30	8	5614	1758	651	93	277	191	7723	2581

* Includes Tutor, Surgical, Ophthalmic, OR & Pediatric Nurses

7.4 HEALTH PROFESSIONALS POPULATION RATIO BY REGION, 1993

Region	Population	Physician			Nurse			Health Assistant		Environmental Health Worker	
		No.	Ratio	*Index	No.	Ratio	Index	No.	Ratio	No.	Ratio
Tigray	3,797,000	71	53479	5.35	878	4325	0.86	725	5237	41	92610
Afar	1,243,000	15	82867	8.29	223	5574	1.11	71	17507	13	95615
Amhara	16,748,000	220	76127	7.61	1436	11663	2.33	1729	9687	237	70667
Oromia	23,023,000	267	86228	8.62	1894	12156	2.43	2219	10375	304	75734
Somali	3,797,000	38	99921	9.99	339	11201	2.24	191	19880	31	122484
Benishangul	551,000	22	25045	2.50	204	2701	0.54	176	3131	31	17774
SNNPR	12,903,000	166	77729	7.77	1175	10981	2.20	1299	9933	169	76349
Gambella	216,000	10	21600	2.16	158	1367	0.27	68	3176	16	13500
Hareri	166,000	49	3388	0.34	149	1114	0.22	80	2075	10	16600
Addis Ababa	2,570,000	215	11953	1.20	585	4393	0.88	461	5575	36	71389
Dire Dawa	330,000	36	9167	0.92	109	3028	0.61	72	4583	13	25385
Central	-	257	-	0.00	573	-	-	295	-	19	-
National	65,344,000	1366	47836	4.78	7723	8461	1.69	7386	8847	920	71026
WHO Standard			1:10000			1:5000					

Remark: The ratio is calculated based on the professionals working under MOH only, this might over-estimate the ratio (people served per health personnel).

* An adjustment factor needed to reach the standard.

8. BUDGET ALLOCATION & EXPENDITURE

8.1 RECURRENT HEALTH BUDGET ALLOCATION & EXPENDITURE BY REGION, 1993

Region	*Budget	**Expenditure	% Expenditure
Tigray	38,680,000	35,660,000	92.2
Afar	10,000,000	10,650,000	106.5
Amhara	73,080,000	69,570,000	95.2
Oromia	115,700,000	113,000,000	97.7
Somali	17,140,000	9,070,000	52.9
Ben-Gum	11,880,000	10,430,000	87.8
SNNPR	58,500,000	51,630,000	88.3
Gambella	6,800,000	8,570,000	126.0
Hareri	8,280,000	7,250,000	87.6
Addis Ababa	63,300,000	53,790,000	85.0
Dire Dawa	7,030,000	5,760,000	81.9
Federal MOH	55,720,000	69,000,000	123.8
National	466,110,000	444,380,000	95.3

8.2 CAPITAL HEALTH BUDGET ALLOCATION & EXPENDITURE BY REGION, 1993

Region	*Budget	**Expenditure	% Expenditure
Tigray	54,640,000	16,580,000	30.3
Afar	31,830,000	12,060,000	37.9
Amhara	120,220,000	12,330,000	10.3
Oromia	182,490,000	20,870,000	11.4
Somali	52,040,000	8,910,000	17.1
Ben-Gum	21,610,000	1,700,000	7.9
SNNPR	161,060,000	18,200,000	11.3
Gambella	20,270,000	1,220,000	6.0
Hareri	8,950,000	190,000	2.1
A/Ababa	52,360,000	2,760,000	5.3
Diredawa	9,060,000	350,000	3.9
Federal MOH	41,690,000	210,180,000	504.1
National	756,220,000	305,350,000	40.4

* Original budgets

** The figures are preliminary projection.

Source: Ministry of Finance

8.3 HEALTH EXPENDITURE PER CAPITA BY REGION, 1993

Region	Population 1993	Budget Allocation	Total Expenditure	Per Capita
Tigray	3,797,000	93,320,000	52,240,000	13.8
Afar	1,243,000	41,830,000	22,710,000	18.3
Amhara	16,748,000	193,300,000	81,900,000	4.9
Oromia	23,023,000	298,190,000	133,870,000	5.8
Somali	3,797,000	69,180,000	17,980,000	4.7
Ben-Gum	551,000	33,490,000	12,130,000	22.0
SNNPR	12,903,000	219,560,000	69,830,000	5.4
Gambella	216,000	27,070,000	9,790,000	45.3
Hareri	166,000	17,230,000	7,440,000	44.8
Addis Ababa	2,570,000	115,660,000	56,550,000	22.0
Dire Dawa	330,000	16,090,000	6,110,000	18.5
Federal MOH		97,410,000	279,180,000	
National	65,344,000	1,222,330,000	749,730,000	11.5

8.4 NATIONAL RECURRENT BUDGET ALLOCATION & EXPENDITURE

Year	Recurrent			
	Allocation	Expenditure	% Expenditure	% National
1980	133,157,111	117,645,563	88.4	3.5
1981	103,560,009	73,967,816	71.4	2.4
1982	75,507,467	56,890,315	75.3	1.5
1983	159,062,394	128,398,802	80.7	3.4
1984	160,799,956	151,508,560	94.2	4.1
1985	196,655,412	189,093,097	96.2	6.2
1986	300,921,100	257,700,000	85.7	6.5
1987	337,850,000	310,210,000	91.8	5.7
1988	357,040,000	328,060,000	91.9	6.1
1989	362,590,000	333,340,000	91.9	6.0
1990	379,800,000	394,264,000	103.8	5.5
1991	478,870,000	455,807,000	95.2	5.6
1992	406,799,000	398,412,486	98.0	3.5
1993	466,110,000	444,380,000	95.3	4.0

Source: Ministry of Finance

8.5 NATIONAL CAPITAL BUDGET ALLOCATION & EXPENDITURE

Year	Capital			
	Allocation	Expenditure	% Expenditure	% National
1980	54,511,358.00	37,035,181.00	67.94	2.42
1981	65,989,537.00	43,712,369.00	66.24	2.13
1982	63,657,463.00	41,816,479.00	65.69	2.31
1983	48,914,848.00	32,083,363.00	65.59	2.18
1984	63,014,122.00	37,390,162.00	59.34	3.60
1985	68,185,200.00	66,800,000.00	97.97	4.59
1986	211,012,822.00	68,548,811.00	32.49	5.51
1987	224,690,000.00	119,960,000.00	53.39	4.50
1988	262,300,000.00	153,890,000.00	58.67	5.02
1989	307,098,736.00	216,420,000.00	70.47	5.93
1990	354,200,000.00	276,910,000.00	78.18	6.59
1991	303,100,000.00	648,390,000.00	213.92	4.91
1992	360,537,000	176,700,000	49.01	4.75
1993	756,220,000	305,350,000	40.4	13.6

Source: Ministry of Finance

9. DISEASE STATISTICS

9.1 NUMBER OF INPATIENTS, DAYS, DEATHS AND BEDS, 1993

Regions	Hospitals & Health Centers							
	Total Discharged		Discharged Dead		No. of Beds	Total Length of Stay in Days	Ave. Length of Stay	Bed Occupancy Rate
	Both Sexes	Female	Both Sexes	Female				
Tigray	29129	14565	1103	438	1263	183978	6.3	39.9
Afar	1412	569	135	48	236	NA	NA	NA
Amhara	42886	0	0	0	1510	NA	NA	NA
Oromia	69822	0	0	0	1981	NA	NA	NA
Somali	3128	1577	158	70	330	21569	6.9	17.9
Benishangul	2391	1176	85	33	425	6773	2.8	4.4
SNNPR	38317	20157	1566	0	963	NA	NA	NA
Gambella	NA	NA	NA	NA	89	NA	NA	NA
Hareri	6831	4152	542	237	338	61111	9.0	49.5
Addis Ababa	16697	8994	904	0	253	161783	9.7	175.2
Diredawa	7558	NA	NA	NA	2262	53108	7.0	6.4
Central	8400	3787	609	265	1871	135576	16.1	19.9
National	226571	54977	5102	1091	11521	623898	2.8	25.4

9.2 TOP 10 LEADING CAUSES OF OUT PATIENT VISITS, 1993

Rank	Diagnosis	Cases	%
1	All types of Malaria	328,760	10.4
2	Helminthiasis	213,195	6.7
3	Acute upper respiratory infection	205,129	6.5
4	Bronchopneumonia	173,123	5.5
5	Infections of Skin & Subcutaneous tissue	145,680	4.6
6	Gastric & Duodenites	137,942	4.4
7	Dysentery	111,938	3.5
8	Tuberculosis of respiratory system	70,526	2.2
9	Sexually transmitted Infection	68,733	2.2
10	Bronchitis, Chronic and unqualified	58,594	1.9
	Total of the above cases	1,513,620	47.8
	Total of all cases	3,167,514	100.0

9.3 TOP 10 LEADING CAUSES OF ADMISSION, 1993

Rank	Diagnosis	Cases	%
1	All types of Malaria	16,782	14.8
2	Pneumonia	10,090	8.9
3	Tuberculosis of Respiratory System	8,881	7.8
4	Accidents	6,967	6.2
5	Abortion	4,449	3.9
6	Pregnancy, childbirth & the Puerperium	4,326	3.8
7	Cataract	2,735	2.4
8	Bacillary Dysentery	1,848	1.6
9	Gastroenteritis & colitis	1,707	1.5
10	Meningitis	1,015	0.9
	Total of the above cases	58,800	51.9
	Total of all cases	113,365	100.0

9.4 TOP 10 LEADING CAUSES OF DEATHS, 1993

Rank	Diagnosis	Cases	%
1	Tuberculosis of Respiratory System	1,005	10.1
2	Pneumonia	734	7.3
3	All types of malaria	462	4.6
4	Bacillary dysentery	224	2.2
5	Accidents	156	1.6
6	Meningitis	149	1.5
7	Hypertension	142	1.4
8	Gastro-enteritis & Colitis	109	1.1
9	AIDS	83	0.8
10	Leishmaniasis	48	0.5
	Total of the above cases	3,113	31.1
	Total of all cases	10,006	100.0

Remark: Data from Oromia, Gambella, Dire Dawa is not included

9.5 MALARIA CASES BY PARASITE SPECIES

Year	Region	Exam	Positive	P.f.	P.v.	P.m.	Mixed
1988	Tigray	87,674	31,457	25,254	6,208	0	0
	Afar	32,558	13,917	10,373	3,444	0	0
	Amhara	271,156	135,651	93,233	42,435	135	159
	Oromia	370,574	150,425	92,813	57,627	28	57
	Somali	5,299	1,307	1,117	86	0	4
	Ben-Gum	88,193	32,373	25,587	6,745	26	7
	SNNPR	227,914	102,541	58,209	44,238	32	19
	Gambella	27,620	10,740	9,332	1,204	203	1
	Total	1,110,988	478,411	315,918	161,987	424	247
	%	43.1	66.0	33.9	0.1	0.1	
1989	Tigray	83,623	29,448	22,284	6,998	0	0
	Afar	33,597	15,305	10,792	4,513	0	0
	Amhara	246,483	124,547	73,737	49,923	69	88
	Oromia	397,341	182,963	105,832	69,084	45	93
	Somali	12,293	2,628	1,924	704	0	0
	Ben-Gum	31,783	6,739	4,662	2,003	0	0
	SNNPR	270,170	136,354	69,934	66,402	1,774	1,756
	Gambella	27,830	11,820	8,601	3,119	91	9
	Total	1,103,120	509,804	297,766	202,746	1,979	1,946
	%	46.2	58.4	39.8	0.4	0.4	
1990	Tigray	166,510	68,363	50,002	18,297	0	0
	Afar	47,410	22,414	13,483	8,931	0	0
	Amhara	244,635	117,535	71,769	45,637	64	65
	Oromia	526,897	238,503	155,591	78,813	21	145
	Somali	11,769	5,947	5,478	469	0	0
	Ben-Gum	19,521	4,548	3,276	1,274	0	0
	SNNPR	258,848	136,608	74,884	61,638	0	0
	Gambella	30,269	11,042	10,081	760	193	8
	Total	1,305,859	604,960	384,564	215,819	278	218
	%	46.3	63.6	35.7	0.1	0.1	
1991	Tigray	125,517	55,323	35,201	20,115	7	91
	Afar	55,276	26,264	15,345	10,419	0	0
	Amhara	286,185	147,773	92,575	55,231	103	95
	Oromia	598,162	269,897	162,702	104,331	23	109
	Somali	21,305	10,500	9,180	1,317	0	3
	Ben-Gum	34,498	12,765	7,296	5,467	2	0
	SNNPR	224,779	113,897	53,611	59,089	112	1,085
	Gambella	23,145	9,269	8,268	918	27	0
	Harari	9,597	2,231	2,026	203	0	2
Total	1,378,464	647,919	386,204	257,090	274	1,385	
	%	47.0	59.6	39.7	0.1	0.2	

Year	Region	Exam	Positive*	P.f.	P.v.	P.m.	Mixed
1992	Tigray	219,972	30,376	22,237	17,673		77
	Afar	NA	NA	NA	NA	NA	NA
	Amhara	458,474	89,077	50,228	4,059	NA	NA
	Oromia	467,907	136,873	68,269	66,306	44	24
	Somali	26,660	NA	NA	NA	NA	NA
	Ben-Gum	11025	5857	3,903	1,856	1	
	SNNPR	332,738	61,079	28,876	31,103	78	577
	Gambella	NA	7,271	NA	NA	NA	NA
	Harari	NA	2,274	1895	379	NA	NA
	Dire Dawa	NA	2,290	1523	767	NA	NA
	Total	1,516,776	335,097	176,931	122,143	123	678
		%	22.1	52.8	36.5	0.0	0.2
1993	Tigray	72,725	17,527	8,428	9,099	-	-
	Afar	91,724	47,474	33,247	14,227	-	-
	Amhara	410,859	88,817	49,209	39,294	107	207
	Oromia	354,942	140,158	75,683	64,318	107	50
	Somali**	16,754	3,433	3,309	124	-	-
	Ben-Gumuz	17,127	4,157	2,431	1,723	3	-
	SNNP**	172,426	82,486	55,310	26,780	133	263
	Gambella	20,771	10,305	9,031	1,254	20	-
	Harari	7,947	2,675	2,277	398	-	-
	Addis Ababa	NA	NA	NA	NA	NA	NA
	Dire Dawa	4,452	3,339	1,627	1,712	-	-
	Total	1,169,727	400,371	240,552	158,929	370	520
		%	34.2	60.1	39.7	0.1	0.1

* Does not include clinical malaria cases

** Incomplete report

9.6 TUBERCULOSIS AND LEPROSY

9.6.1 TUBERCULOSIS CASE FINDINGS, 1993

Regions	Pulmonary Smear Positive							Pulmonary Smear Negative		Extra-Pulmonary		Total Cases
	Cases	%	New	Relapses	Fail	Defaulter	Cases	%	Cases	%		
	Tigray	1,924	19.7	1,833	80	4	7	3,532	36.1	4,330	44.3	
Amhara	5,779	30.4	5,380	205	47	147	6,284	33.0	6,976	36.7	19,039	
Oromia	11,206	39.7	10,713	300	69	124	8,436	29.9	8,618	30.5	28,260	
Somali	1,772	56.0	1,622	64	41	45	607	19.2	784	24.8	3,163	
SNNP	8,612	48.1	8,164	178	82	188	4,645	26.0	4,663	26.0	17,920	
Hareri	226	22.9	216	4	3	3	488	49.4	274	27.7	988	
Addis Ababa	4,227	36.2	3,829	300	31	67	4,088	35.0	3,372	28.9	11,687	
Dire Dawa	727	37.6	666	36	9	16	914	47.2	295	15.2	1,936	
Total	34,473	37.2	32,423	1,167	286	597	28,994	31.3	29,312	31.6	92,779	

Remark: Data includes only from DOTS implementing zones

9.6.2 TUBERCULOSIS RESULTS OF TREATMENT 1991/1992

9.6.2.1 PATIENTS ON SHORT COURSE CHEMOTHERAPY

Regions	Total	Cured	Completed	Success Rate %	% Died	% Fail	% Default	% Transferred
Tigray	1797	1287	175	81.4	7.1	0.2	6.3	5.0
Amhara	1053	657	187	80.2	7.2	0.9	6.7	5.0
Oromia	7305	4846	732	76.4	8.1	0.7	11.9	2.9
Somali	545	404	19	77.6	7.9	3.1	8.8	2.6
SNNP	5622	2714	1728	79.0	5.1	2.1	9.4	4.5
Hareri	162	127	NA	78.4	6.2	0.6	4.9	9.9
Addis Ababa	2912	2193	214	82.7	9.1	0.7	5.8	2.1
Dire Dawa	195	123	34	80.5	5.6	2.1	7.2	4.6
Total	19591	12351	3089	78.8	7.2	1.2	9.3	3.6

9.6.2.1 PATIENTS ON LONG COURSE CHEMOTHERAPY

Regions	Total	Cured	Completed	Success Rate %	% Died	% Fail	% Default	% Transferred
Tigray	26	18	5	88.5	3.9	0.0	7.7	0.0
Amhara	522	82	246	62.8	4.6	1.7	27.2	3.6
Oromia	1315	512	384	68.1	4.3	0.5	22.2	4.9
Somali	12	3	3	50.0	0.0	8.3	8.3	0.0
SNNP	2173	589	901	68.6	4.6	1.2	15.5	4.1
Hareri*								
Addis Ababa	17	13		76.5	0.0	11.8	0.0	11.8
Dire Dawa*								
Total	4065	1217	1539	67.8	4.5	1.1	19.0	4.3

Remark: Data includes only from DOTS implementing zones

* Hareri & Dire Dawa are not included in long course chemotherapy area

9.6.3 LEPROSY CASE FINDING, 1993

Regions	Total Cases			New Cases			Relapses			Defaulter			Others		
	All	PB %	MB %	All	PB %	MB %	All	PB %	MB %	All	PB %	MB %	All	PB %	MB %
Tigray	198	11.6	88.4	185	11.9	88.1	4	25.0	75.0	1	0.0	100.0	8	0.0	100.0
Amhara	1556	22.8	77.2	1473	23.4	76.6	11	0.0	100.0	27	22.2	77.8	45	6.7	93.3
Oromia	2314	10.7	89.3	2081	11.1	88.9	65	4.6	95.4	116	5.2	94.8	52	11.5	88.5
Somali	26	7.7	92.3	26	7.7	92.3	0	0.0	0.0	0	0.0	0.0	0	0.0	0.0
Benishangul	41	19.5	80.5	28	17.9	82.1	0	0.0	0.0	13	23.1	76.9	0	0.0	0.0
SNNPR	616	20.0	80.0	502	20.5	79.5	24	12.5	87.5	81	17.3	82.7	9	33.3	66.7
Gambella	179	24.0	76.0	142	22.5	77.5	9	66.7	33.3	22	9.1	90.9	6	50.0	50.0
Hareri	34	5.9	94.1	31	3.2	96.8	0	0.0	0.0	0	0.0	0.0	3	33.3	66.7
Addis Ababa	104	9.6	90.4	103	9.7	90.3	1	0.0	100.0	0	0.0	0.0	0	0.0	0.0
Dire Dawa	13	23.1	76.9	14	21.4	78.6	0	0.0	0.0	0	0.0	0.0	0	0.0	0.0
Total	5081	16.0	84.0	4585	16.5	83.5	114	11.4	88.6	260	11.9	88.1	123	13.0	87.0

9.7 NATIONAL SURVEILLANCE SYSTEM IDS REPORT, 1993

A. Annual report by region compiled from weekly reportable diseases

Region	Cholera		Plague		Yellow Fever		M.Meningitis		Measles		AFP / Polio		NNT	
	Case	*D	Case	D	Case	D	Case	D	Case	D	Case	D	Case	D
Tigray	0	0	0	0	0	0	53	5	333	0	8	0	7	0
Afar	0	0	0	0	0	0	0	0	0	0	0	0	0	0
Amhara	0	0	0	0	0	0	40	4	654	2	21	0	0	0
Oromia	0	0	0	0	0	0	390	28	812	11	29	1	4	2
Somali	145	3	0	0	0	0	176	30	387	0	2	0	0	0
Benishangul	0	0	0	0	0	0	170	6	0	0	0	0	0	0
SNNP	0	0	0	0	0	0	193	30	304	2	14	0	25	12
Gambella	0	0	0	0	0	0	59	3	53	0	1	0	0	0
Harari	0	0	0	0	0	0	94	10	0	15	0	2	3	5
Addis Ababa	0	0	0	0	0	0	77	6	0	0	0	2	0	0
Dire Dawa	0	0	0	0	0	0	537	9	19	0	8	0	0	0
National	145	3	0	0	0	0	1789	131	2562	30	83	5	39	19

B. Annual report by region compiled from monthly reportable diseases

Region	B. Dysentery		Malaria		Rabies		T.Fever		R.Fever	
	Case	*D	Case	D	Case	D	Case	D	Case	D
Tigray	8261	7	33305	60	530	0	256	1	96	0
Afar	236	0	4740	26	0	0	62	1	0	0
Amhara	8834	2	60825	139	103	2	3616	16	437	3
Oromia	12428	2509	113265	262	1007	1	7955	28	1655	13
Somali	12229	179	28086	283	32	0	245	8	5	0
Benishangul	3928	1	55258	66	0	0	655	0	2	0
SNNP	10570	29	137324	301	293	2	5414	21	1931	6
Gambella	388	1	15695	32	2	0	152	0	0	0
Harari	1154	1148	16052	20	18	0	957	1	189	0
Addis Ababa	1013	524	3953	23	5	0	145	1	19	0
Dire Dawa	3538	0	2160	0	17	0	5076	0	387	4
National	62579	4400	470663	1212	2007	5	24533	77	4721	26

D: Death

C. Annual report by region compiled from quarterly reportable diseases

Region	AIDS		G.Worm		TBC		Leprosy		STDs	
	Case	D	Case	D	Case	D	Case	D	Case	D
Tigray	194	1	0	0	2853	5	48	0	2444	0
Afar	0	0	0	0	0	0	0	0	0	0
Amhara	NA	39	0	0	18985	130	558	0	31682	0
Oromia	1021	0	0	0	12351	73	623	0	4207	1
Somali	70	1	0	0	2810	452	8	0	2019	0
Benishangul	42	0	0	0	1520	4	59	0	546	0
SNNP	477	0	20	0	4776	32	225	0	1761	0
Gambella	0	0	7	0	211	0	26	0	314	0
Harari	254	1	0	0	758	11	16	0	282	0
Addis Ababa	107	12	0	0	1538	60	2	0	247	0
Dire Dawa	1603	0	293	0	11646	91	345	0	8005	0
National	NA	54	320	0	57448	858	1910	0	51507	1

9.8 HIV/AIDS CASES

9.8.1 REGIONAL REPORTED AIDS CASES

Region	Cases				
	1997 G.C.	1998 G.C.	1999 G.C.	2000 G.C.	Cum. Total
Tigray	0	789	1156	1328	4357
Afar	0	0	0	0	0
Amhara	0	321	2054	1044	12915
Oromia	2424	3065	3248	3482	22658
Somali	17	0	0	0	17
Benishangul Gumuz	0	129	374	28	531
SNNPR	627	690	1028	1688	7859
Gambella	0	44	73	76	295
Harari	525	708	157	318	3010
Addis Ababa	3344	3246	3251	22859	36643
Dire Dawa	694	424	623	238	3519
National	7631	9416	11964	31061	91804

9.8.2 GLOBAL SURVEILLANCE OF HIV/AIDS CASES

Country	HIV/AIDS Estimates										Population, 1999	
	People living with HIV/AIDS, end 1999					Cumulative AIDS Orphans (in '000)	Adults & Children AIDS Deaths, 1999	Total (in '000)		Adult (in '000)		
	Adults & Children (in '000)	Adults (15-49) (in '000)	Adult Rate	Women (15-49)	Children (0-14)			Total	Adult	Total	Adult	
Global Total	34,300	33,000	1.07	15,700,000	1,300,000	13,200	2,800,000	5,958,865	3,083,265	273,488	3,006	
Sub-Saharan Africa	24,500	23,400	8.57	12,900,000	1,000,000	12,100	2,200,000	596,272	26,931	61,123	299	
Burundi	360	340	11.32	190,000	19,000	230	39,000	6,587	3,006	631	299	
Djibouti	37	35	11.75	19,000	1,500	7,200	3,100	631	299	3,717	1,705	
Eritrea		49	2.87									
Ethiopia	3,000	2,900	10.63	1,600,000	150,000	1,200,000	280,000	61,123	26,931	61,123	26,931	
Kenya	2,100	2,000	13.95	1,100,000	78,000	730,000	180,000	29,507	14,217	29,507	14,217	
Malawi	800	760	15.96	420,000	40,000	390,000	70,000	10,674	4,733	10,674	4,733	
Nigeria	2,700	2,600	5.06	1,400,000	120,000	1,400,000	250,000	108,995	50,705	108,995	50,705	
Rwanda	400	370	11.21	210,000	22,000	270,000	40,000	7,238	3,338	7,238	3,338	
Somalia								9,718	4,280	9,718	4,280	
South Africa	4,200	4,100	19.94	2,300,000	95,000	420,000	250,000	39,796	20,630	39,796	20,630	
Uganda	820	770	8.30	420,000	53,000	1,700,000	110,000	21,209	9,222	21,209	9,222	
Tanzania	1,300	1,200	8.09	670,000	59,000	1,100,000	140,000	32,799	15,068	32,799	15,068	
Zambia	870	830	19.95	450,000	40,000	650,000	99,000	8,974	4,137	8,974	4,137	
Zimbabwe	1,500	1,400	25.06	800,000	56,000	900,000	160,000	11,509	5,771	11,509	5,771	

Cont. ...

Cont. ...

Country	HIV/AIDS Estimates								Population, 1999	
	People living with HIV/AIDS, end 1999						Cumulative AIDS Orphans (in '000)	Adults & Children AIDS Deaths, 1999	Total (in '000)	Adult (in '000)
	Adults & Children (in '000)	Adults (15-49) (in '000)	Adult Rate	Women (15-49)	Children (0-14)					
East Asia & Pacific	530	530	0.06	66,000	5,200	5,600	18,000	1,477,678	821,647	
Australia & New Zealand	15	15	0.13	1,100	190	<500	120	22,522	11,482	
South & South-East Asia	5,600	5,400	0.54	1,900,000	200,000	850,000	460,000	1,920,326	99,300,466	
Eastern Europe & Central Asia	420	410	0.21	110,000	15,000	500	8,500	391,537	195,811	
Western Europe	520	520	0.23	130,000	4100	9,000	6,800	401,691	192,558	
North Africa & Middle East	220	210	0.00	42,000	8,000	15,000	13,000	336,496	171,943	
North America	900	890	1.00	180,000	11,000	70,000	20,000	306,931	153,738	
Caribbean	360	350	2.00	130,000	9,600	85,000	30,000	32,024	16,860	
Latin America	1,300	1,200	0.49	300,000	28,000	110,000	48,000	473,388	252,270	

Source: Report on the Global HIV/AIDS Epidemic, June 2000 (UNAIDS)

10 OUTPUT FROM HEALTH PROFESSIONAL TRAINING SCHOOLS

10.1 SUMMARY OF GRADUATES

Professions	1990			1991			1992			1993		
	BS	F	%F	BS	F	%F	BS	F	%F	BS	F	%F
Medical Doctor	140	8	5.7	136	14	10.3	152	8	5.3	128	11	8.6
Health Officer	83	9	10.8	79	9	11.4	157	27	17.2	181	27	14.9
Pharmacist	31	3	9.7	34	1	2.9	31	0	0	54	10	18.5
Nurse B.Sc.	15	4	26.7	27	6	22.2	25	4	16.0	31	13	41.9
Senior Clinical Nurse	434	NA	NA	588	225	38.3	364	111	30.5	711	234	32.9
Junior Clinical Nurse	339	NA	NA	348	147	42.2	512	180	35.2	882	344	39.0
Senior Public Health Nurse	51	NA	NA	140	43	30.7	209	67	32.1	155	44	28.4
Junior Public Health Nurse	143	NA	NA	152	61	40.1	131	38	29.0	106	18	16.9
Senior Mid Wife Nurse	14	7	50.0	53	29	54.7	36	23	63.9	87	43	49.4
Junior Midwife Nurse	133	NA	NA	108	58	53.7	122	72	59.0	192	103	53.7
Senior Pharmacy Technician	34	6	17.7	34	6	17.7	67	14	20.9	101	13	12.9
Junior Pharmacy Technician	20	NA	NA	29	7	24.1	62	18	29.0	105	23	21.9
Laboratory Technologist	15	0	0	13	0	0	21	0	0	15	2	13.3
Senior Laboratory Technician	104	NA	NA	195	26	13.3	211	27	12.8	249	16	6.4
Junior Laboratory Technician	26	NA	NA	75	23	30.7	79	41	51.9	199	57	28.6
Environmental Health Technologist	20	0	0	20	0	0	20	0	0	21	0	0
Senior Environmental Health Technician	116	NA	NA	172	12	7.0	161	24	14.9	145	14	9.7
Junior Environmental Health Technician	21	NA	NA	12	6	50.0	9	2	22.2	9	3	33.3
Senior Radiography Technician	15	0	0	18	0	0	0	0	0	19	2	10.5
Junior Radiography Technician	0	0	0	11	0	0	10	0	0	0	0	0
Total	1754	NA	NA	2244	673	30.0	2379	656	27.6	3390	977	28.8

10.2 DISTRIBUTION OF HEALTH TRAINING SCHOOLS
(Type & Number of graduates)

A. Graduates of Health Professional from Higher Education

No	Training School		Award	Graduates					
	Name	Type		1991		1992		1993	
				BS	F	BS	F	BS	F
1	Addis Ababa University	Medicine	MD	60	5	57	3	57	3
		Pharmacist	B.Pharm.	34	1	31	0	54	10
		Clinical Nurse	Diploma	211	84			110	30
		Mid wife Nurse	Diploma					17	8
		Laboratory Tech	Diploma	41	14	61	0	57	4
		Radiographer technician	Diploma	18	0			19	2
2	Gonder College of Medical Science	Medicine	MD	39	5	53	2	34	4
		Post Basic Health officer	B.Sc.	33	8	43	8	42	4
		Clinical Nurse	Diploma	31	19	31	7	81	9
		Public Health Nurse	Diploma	17	2	71	25	45	9
		Midwife Nurse	Diploma	14	7			29	7
		Lab.technician	Diploma	22	1	47	9	63	3
		Environmental Health	Diploma	27	0	48	1	44	3
3	Jimma University (Institute of Health Science)	Medicine	MD	37	4	42	3	37	4
		Post Basic Health officer	B.Sc.	46	1	44	9	54	5
		Post Basic Nursing	B.Sc.	27	6	25	4	31	13
		Post Basic Env. Health	B.Sc.	20	0	20	0	21	0
		Post Basic Lab-Techn.	B.Sc.	13	0	21	0	15	2
		Clinical Nurse	Diploma	22	15	34	5	32	7
		Public Health Nurse	Diploma	23	9	29	12	37	13
		Pharmacy Tech.	Diploma	34	6	53	13	82	8
		Lab-technician	Diploma	29	0	31	5	46	4
		Environmental Health	Diploma	32	4	40	11	36	6
4	Alemaya University	Health officer	B.Sc.	0	0	37	6	50	10
		Public Health Nurse	Diploma	69	24	38	10	43	9
		Lab-technician	Diploma	70	8	42	7	47	4
		Environmental Health	Diploma	77	5	31	1	36	5
5	Debu University	Health officer	B.Sc.	0	0	33	4	35	8
		Clinical Nurse	Diploma					15	1
		Public Health Nurse	Diploma	31	8	71	20	30	13
		Lab.technician	Diploma	34	3	30	6	36	1
		Environmental Health	Diploma	36	3	42	11	29	0
Total				1147	242	1105	182	1364	209

B. Graduates of Health Professionals from Senior Training Schools

No	Training School		Award	Graduates					
	Name	Type		1991		1992		1993	
				BS	F	BS	F	BS	F
2	Nekemte	Clinical nurse	Diploma	66	20	60	9	67	21
3	Mekele	Clinical nurse	Diploma	89	28	116	38	126	45
		Pharmacy Tech.	Diploma	0	0	14	1	19	5
4	Assela	Clinical nurse	Diploma	60	15	67	23	85	32
5	Harar	Clinical nurse	Diploma	85	33	32	14	48	12
		Mid-wife Nurse	Diploma	20	12	17	14	14	11
6	Yirgalem	Clinical nurse	Diploma	24	11	24	15	20	11
7	Awassa	Mid-wife nurse	Diploma	19	10	19	9	53	7
Total				363	129	349	123	432	144

C. Graduates of Health Professionals from Junior Training School

No	Training School		Award	Graduates					
	Name	Type		1991		1992		1993	
				BS	F	BS	F	BS	F
1	Awassa	Clinical nurse	Certificate	28	15	27	8	20	1
		Public Health Nurse	Certificate	19	4	18	2	3	22
		Mid-wife Nurse	Certificate	16	10			62	13
		Lab. technician	Certificate	28	6	27	20	37	15
2	Arbaminch	Clinical nurse	Certificate	23	8	33	3	70	12
3	Hosanna	Clinical nurse	Certificate	53	19	58	19	62	13
		Mid-wife Nurse	Certificate			39	15	37	15
4	Shashemene	Clinical nurse	Certificate	17	10	15	7	15	3
		Public Health Nurse	Certificate	18	7	13	3	124	61
		Mid-wife Nurse	Certificate	21	3	13	10	34	5
		Pharmacy tech.	Certificate	18	3	21	6	42	18
5	Mettu	Clinical nurse	Certificate	18	4	16	5	15	6
		Public Health Nurse	Certificate	14	7	15	6	59	37
6	Goba	Clinical nurse	Certificate	35	16	26	17	136	60
		Public Health Nurse	Certificate	34	17	26	8	12	1
		Mid-wife Nurse	Certificate	15	12	27	20	41	33
7	Minilik	Clinical nurse	Certificate	17	8	26	15	35	16
		Public Health Nurse	Certificate	16	6	17	6		
		Mid-wife Nurse	Certificate	14	10	24	14		
		Env. Health Tech.	Certificate					22	19
		Pharmacy tech.	Certificate	11	4	24	9	28	10
		Lab. Technician	Certificate	21	9	23	9	28	10
8	Borena	Clinical nurse	Certificate	11	0	10	0		
		Radiographer techn	Certificate						
9	Dessie	Clinical nurse	Certificate	50	20	57	18	154	48
		Public Health Nurse	Certificate	46	21	78	14	58	30
		Mid-wife Nurse	Certificate	6	1	14	2	21	2
10	Axum	Clinical nurse	Certificate	18	12	14	8	15	6
		Clinical nurse	Certificate	12	4	55	28	56	20
		Public Health Nurse	Certificate	10	4	0	0	9	3
		Mid-wife Nurse	Certificate	8	0	5	5	29	6
		Lab. tech.	Certificate	15	7	15	9	48	21
11	Bahir Dar	Environmental health	Certificate	12	6	9	2	9	3
		Clinical nurse	Certificate	23	6	36	19	19	13
		Public Health Nurse	Certificate	15	6	0	0	19	2
		Mid-wife Nurse	Certificate	6	4				
		Pharmacy tech.	Certificate			17	3	15	1
		Laboratory	Certificate	11	1	14	3	19	2
12	Debreator	Clinical nurse	Certificate	26	16	26	12	32	16
		Public Health Nurse	Certificate	20	9	28	11	23	5
		Mid-wife Nurse	Certificate	10	7				
13	Jijiga	Clinical nurse	Certificate			39	8	50	7
		Midwife	Certificate					6	6
14	Debreberhan	Clinical nurse	Certificate			20	7	27	11
Total				735	302	925	351	1491	572

10.3 POST BASIC AND POST GRADUATES

Training Programme	Training Type	Training Institution	Number of Graduates					
			1991		1992		1993	
			BS	F	BS	F	BS	F
Post Graduate Studies	Anatomy	Faculty of Medicine	0	0	0	0	0	0
	Anesthesiology		4	0	3	0	2	0
	Community Health		9	1	6	1	15	0
	Internal Medicine		4	0	6	1	6	0
	Obstetrics & Gyn.		11	2	9	1	9	0
	Ophthalmology		5	1	3	0	3	1
	Orthopedics		0	0	1	0	1	0
	Pathology				4	0	1	0
	Pediatrics & Child Health		5	2	9	1	9	1
	Pharmacology		0	0	4	0	0	0
	Surgery		4	1	9	0	11	0
	Radiology		4	3	4	0	4	1
	Total		46	10	58	4	61	3
Post Basic Diploma	Psychiatry Nurse	Amanuel Hosp	25		25		27	15
	Nurse Anesthesia	Black lion Hosp	28		28		26	12
	Ophthalmic Nurse	Yekatit 12 Hosp					21	11
		Total		53		53		74

GLOSSARY

Age dependency ratio

The ratio of persons in the “dependent” ages (under 15 and older than 64 years) to those in the “economically productive” ages (15-64 years) in a population.

Antenatal coverage

A coverage to a health institution made by a pregnant woman to be sure that she has a safe pregnancy.

Average household size

The mean number of members per household

Child woman ratio

The number of children under age five per 1,000 women of childbearing age in a given year. This measure is used as a rough fertility indicator, especially when detailed data on births are lacking.

Contraceptive prevalence rate

The proportion of eligible women (15-49 years old) who got contraceptive service.

Crude birth rate

The number of births in a population during a specified period divided by the number of person-years-lived by the population during the same period. It is frequently expressed as births per 1,000 population.

Crude death rate

The number of deaths in a population during a specified period divided by the number of person-years-lived by the population during the same period. It is frequently expressed as births per 1,000 population.

Delivery attended

The service given for a pregnant woman during labor; management of normal delivery and detection of complications, management of risk cases in labor and complicated cases.

Demography

The study of population and its characteristics, with reference to such

factors as size, age structure, density, fertility, mortality, growth and social and economic variables.

Discharged patient

The number of patients who are discharged from the health institution (whether it is dead or alive) after being diagnosed and/or treated.

Drug shop

Shall mean an establishment which offers for sale to the public. Such medical preparations, cosmetics nursing and sanitary articles, dietetic products and other articles as approved for the purpose by the Ministry but does not engage in the compounding preparation or manufacture of any medical preparation.

Enrolment ratio

The number of students attending a given school, divided by the total number of persons of the age normally in school at that level.

Fully immunized

A child of age under one who has taken all types of antigens completely.

General fertility rate

The number of births occurring in a given year per 1000 women in the reproductive ages (i.e. women aged 15-49).

Health center

Establishment which provides both preventive and curative out-patient care. Health Centre is also responsible for training CHAs & TBAs.

Health post

One of the satellite facility in the Primary Health Care Unit

Health stations

The smallest health units in the conventional Health Service structure and are staffed with 1-3 health assistants.

Higher clinic

Staffed at least by a general medical practitioner, a specialist and assisted by various specialists serve for general outpatient clinics. For emergency and delivery this clinic has up to 5 beds.

Hospital

An establishment with at least 25 beds that provides general medical care round the clock. It is at least equipped with basic laboratory, X-ray and basic treatment facilities. It is staffed with at least one medical practitioner.

Household

A single person living alone or a group voluntarily living together, having common house keeping arrangements for supplying basic living needs, such as principal meals. The group may consist of related or unrelated persons.

Infant mortality rate

The ratio of the number of deaths under one year of age occurring in a given year to the number of births in the same year. Also used in a more rigorous sense to mean the number of deaths that would occur under one year of age in a life table with a radix of 1,000.

Infant mortality

The probability of dying between birth and age one per 1000 live births in a given year.

In-patient

A patient who is admitted and occupy bed in a health institution for diagnosis and/or treatment.

Life Expectancy at Birth

The average number of years a newborn infant can expect to live under current mortality levels.

Live birth

The complete expulsion or extraction from its mother of conception, irrespective of the duration of pregnancy, which after such separation shows any evidence of life.

Lower clinic

Staffed at least by a health assistant or a nurse and serve for general outpatient clinic.

Maternal mortality rate

A measure of a woman's risk of dying from causes associated with pregnancy.

Medium Clinic

Staffed at least by health officer or general medical practitioner & serve for general medical services.

Morbidity

The extent of illness, injury or disability in a population.

Out-patient

A patient who receive ambulatory care (examination and treatment) with out being admitted or occupying a bed.

Pharmacy

Any store, shop or other place in which medicinal preparation are compounded or prepared and dispensed or sold to the public.

Postnatal visits

Visits made by a mother to a HCU or visited by a health worker (at home) within the first 45 days after giving birth.

Potential health service coverage

The population covered in percentage based on the existing health centers and health stations in catchment's area.

Rate of national increase

The difference between the births and deaths occurring during a given period divided by the number person-year lived by the population during the same period. This rate, which specifically excludes changes resulting from migration, is equal to the difference between the crude birth rate and the crude death rate.

Rural drug vendor

The lowest level of medicinal retail outlet that dispenses medical preparations as approved for this level by the Ministry, but does not engage in compounding preparation or manufacturing of any medical preparation.

School enrolment

The number of students who are enrolled and attend various educational institutions.

Sex ratio

The number of males in a population or specific sub-population, divided by corresponding number of females, conventionally multiplied by 100.

Special clinic

Provides specific medical interventions such as medical, surgical, obstetric gyn, ophthalmology, etc. and is assisted by specialists in various disciplines.

Total fertility rate

The average number of children that would be born per woman of all women lived to end of their childbearing years and born children according to a given set of age specific fertility rates.

Under-five mortality

The probability of dying between birth and age five per 1000 live births.

Under 5 children

Under 5 year children visits to health institution for monitoring of growth and development, screening of risk cases, and for management of disease or mal development.

Vital events

Births, deaths, marriages and divorces.

GNI PPP per capita

GNI PPP per capita is Gross National Income in purchasing power parity (PPP) divided by midyear population. GNI PPP refers to Gross National Income converted to “international” dollars using a purchasing power parity conversion factor. International dollars indicate the amount of goods & services one could buy in the United States with a given amount of money.

